



**Concrete Pumps Inc.**

**BUILT TO  
*PERFORM***



***2023 PUMP  
BROCHURE***



# TABLE OF CONTENTS

About Us	3
Product Features	9
Line Pump Model: CTY-100	13
Boom Pump Model: 21X-4Z	15
Boom Pump Model: 33X-5ZZ	17
Boom Pump Model: 37X-4R	19
Boom Pump Model: 38X-5ZR	21
Boom Pump Model: 40X-5ZR	23
Boom Pump Model: 43X-5RZ	25
Boom Pump Model: 48X-5RZ	27
Boom Pump Model: 52X-5RZ	29
Boom Pump Model: 57X-6RZ	31
Boom Pump Model: 63X-5RZ	33
Chassis Options	37
Customer Service	38
Parts	40
Testimonials	43
DY Team	47
Locations	49

# ***WHY DY?***

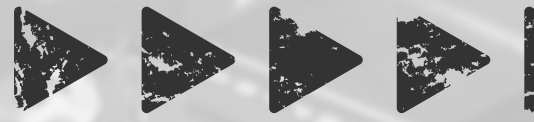
## **WHY CHOOSE DY?**

### ***It's All About the People!***

DY Concrete Pumps is the right choice, because we have the right people.

In the middle of the day, or in the middle of the night, DY is available to help.

# ABOUT DY



DY Concrete Pumps was established in 1992 and has become a global leader in the concrete pump industry since then. Over the past 30 years, DY Korea has gained the reputation of manufacturing high-quality, dependable concrete pumps for countries around the globe. DY Concrete Pumps North America was born to provide these proven pumps to the North American market at a competitive price and with superior support from our US headquarters and Canadian branch.



DY Concrete Pumps' three locations are conveniently placed to provide quick service to our North American customers no matter the location. Our main office is in Dallas/Fort Worth, Texas with locations in Ohio, and Calgary, Alberta, Canada. Our Dallas-Fort Worth headquarters is equipped with a parts, service, and sales facility that is ready to meet your needs regardless of where you are on the continent.



**QUALITY  
EQUIPMENT**



**EXPERT  
TEAM**



**IMPECCABLE  
SUPPORT**

# Concrete Pumps



With four decades of business experience, DY is a time-tested concrete pump company that understands the individual needs of owners and operators. We understand the importance of using the highest-quality materials to ensure our pumps exceed our customers' performance and durability standards. All our products are made with superior-grade steel and utilize advanced robot welding techniques to guarantee unparalleled quality.

Every DY Concrete Boom Pump features DY's patented hydraulic cylinders for smooth, efficient operation. DY Korea's automotive, hydraulic, and industrial machine departments also supply notable manufacturers such as John Deere, Caterpillar, Ford, and General Motors.

## Services



*Service Center*

*Parts*

*24/7 Support*



DY Concrete Pumps is proud to offer our customers industry-leading service and support. Our customer support network offers tested, real-world experience to help solve any issue at any time of the day or anywhere you are. For problems that require more than a phone call, our parts department guarantees overnight parts shipping to North American customers. DY's Texas Headquarters are also home to one of America's few dedicated concrete pump service centers, state-of-the-art paint facilities, and mobile mechanics on standby. We take service and support seriously so we can keep our customers pumping!

# THE DY DIFFERENCE

## **DY Concrete Pumps provides superior engineering**

with high-quality craftsmanship and design. Our pumps are assembled and tested at our North American centers to ensure each machine meets your high-performance standards.

## **DY Concrete Pumps are Built to Perform.**

DY designs with the owner and operator in mind because our team has end-user experience. We build our pumps to be as operator friendly as possible with simple, reliable controls and no complicated computer systems.

**Most importantly, when purchasing a DY** you gain access to unprecedented customer service. Our support network is a team of knowledgeable professionals who build the pumps, service them, or operate them daily. With 400 years of experience across all aspects of the industry, DY's support network is available 24/7 to solve any problem in the field or over the phone.

**That's the DY Difference.**



# BUILT TO *PERFORM*





# PRODUCT FEATURES



## 360 Degree Continuous Swing Turret

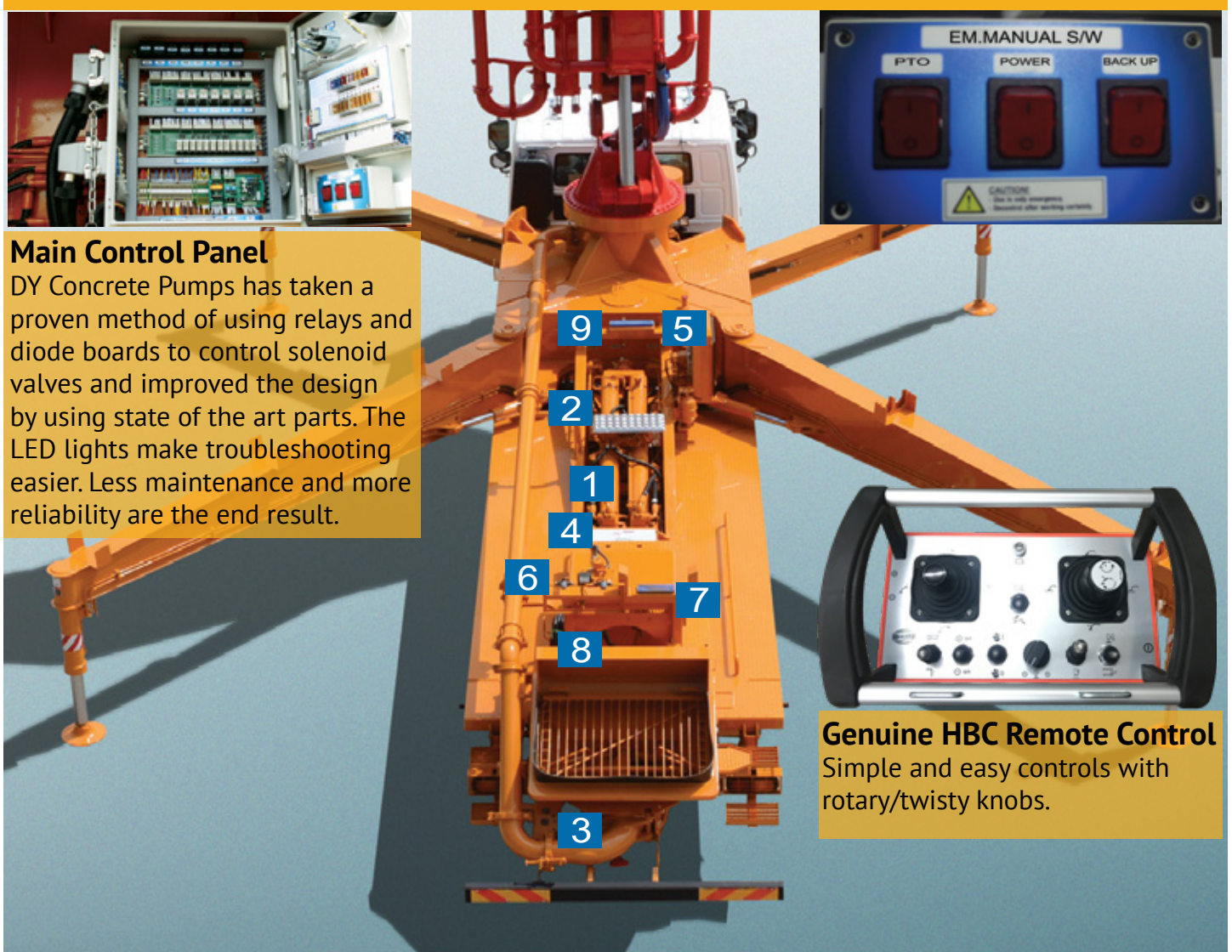
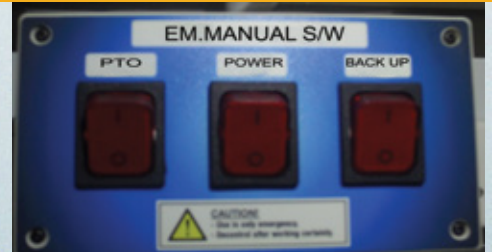
This is a cut away image of our patented 360 degree swivel coupling in the turret which allows for a continuous swing. Yet another feature that makes DY stand out above our competition.

Ask your sales rep for more information on how our patented 360 technology works.



### Main Control Panel

DY Concrete Pumps has taken a proven method of using relays and diode boards to control solenoid valves and improved the design by using state of the art parts. The LED lights make troubleshooting easier. Less maintenance and more reliability are the end result.



### Genuine HBC Remote Control

Simple and easy controls with rotary/twisty knobs.





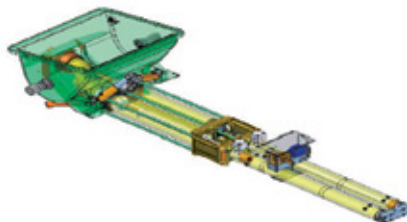
## Optimized Design by Verification through VPD

Virtual Product Development) VPD allows strength and stability verification through simulating the full range of boom operation.



### #1 Electronic Controlled Hyd. Valves

Electronic controlled hydraulic valves with full manual overrides allows for smooth pump operation with a minimum of moving parts for maximum efficiency with low maintenance costs.



### #2 Long Stroke Pumping System

Long stroke pumping provides high volume outputs with smooth and steady flow throughout all pressure ranges.



### #3 Hopper

Designed for easy filling and cleaning with safety features including auger stopping and interruption of s-tube swinging when hopper grate is lifted.



### #4 Air Grease Pump

Standard equipment includes air operated grease pump for manual greasing of the hopper or greasing of the boom.



### #5 Oil Cooler

Large capacity oil cooler insures a long life of hydraulic components and maximum cooling ability through all temperature and pumping conditions.



### #6 Water Pump

Multileveled Centrifugal Pump with hydraulic motor provides high pressure water to provide a quicker pump wash out.



### #7 Remote Switch Box

Rearward location of switch box allows easy access for the operator to provide full pumping control when required.



### #8 Automatic Hopper Greasing

Electric automatic greasing system for the hopper provides efficient greasing of moving hopper parts for maximum service life.



### #9 Main Hydraulic Pump

Excellent performance with guaranteed German Rexroth pump technology.

# **BUILT TO *PERFORM***





Truck Mounted Line Pump

# CTY-100

**BUILT TO  
PERFORM**



## CTY-100 CITY PUMP DETAILS

The DY CTY-100 City Pump is the perfect line pump for urban environments. The flatbed mounting means you have ultimate flexibility and can take this pump almost anywhere to perform almost any concrete pumping job you are contracted for.

Best of all, the CTY-100 City Pump does not require a commercial driver's license (CDL) to operate, which means you can put any of your workers who can drive in charge of delivering or maneuvering the pump, adding to your overall efficiency and productivity level.



# CTY-100 SPECIFICATIONS

Photos and drawings are for illustrative purposes only.  
Dimensions will vary with different truck makes, models and specifications.  
For available options, please contact the factory.



DIMENSIONS & WEIGHT		
Weight	17,380 lbs	7,882 kg
Length	27' 11"	8.5 m
Width	8' .5"	2.45 m
Height	6' 8"	2.04 m

CAPACITIES		
Hopper	14.1 ft3	400 L
Hydraulic Tank	45 Gal	170 L
Water Tank	150 Gal	570 L
Fuel Tank	22 Gal	83 L

CHASSIS SPECIFICATIONS		
Chassis Options	Ford	F550
	Ford	F600
	RAM	5500
Max GVWR	19,500 lbs	8,845 kg

TECHNICAL SPECIFICATIONS		
Output: Rod Side	103 yd <sup>3</sup> /hr	78 m <sup>3</sup> /hr
Output: Piston Side	70 yd <sup>3</sup> /hr	53 m <sup>3</sup> /hr
Pressure: Rod Side	1,015 psi	70 bar
Pressure: Piston Side	1,508 psi	104 bar
Material Cylinder Diameter	8"	200 mm
Material Cylinder Stroke Length	47"	1,200 mm
Max Strokes Per Minute	Rod Side	34
	Piston Side	23
Volume Control	Zero - Full	
Outlet	5"	125mm



This product specification could be changed by DY Corporation without notice to improve the quality.

Truck Mounted Concrete Boom Pump

# 21X-4Z

**BUILT TO  
PERFORM**



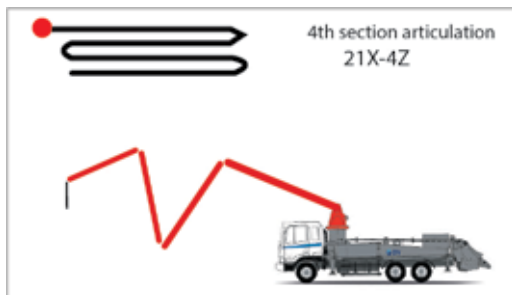
## 21X-4Z DETAILS

The 21X-4Z concrete boom pump is the ideal choice for compact job sites requiring less range and more mobility. This 21-meter concrete boom pump features a four-section, Z boom that provides maximum versatility. The pump is designed to unfold and open in tight spaces and can unfold under a 19 foot ceiling height, making it perfect for working in and around existing structures as well as under bridge decks and other overhead obstructions

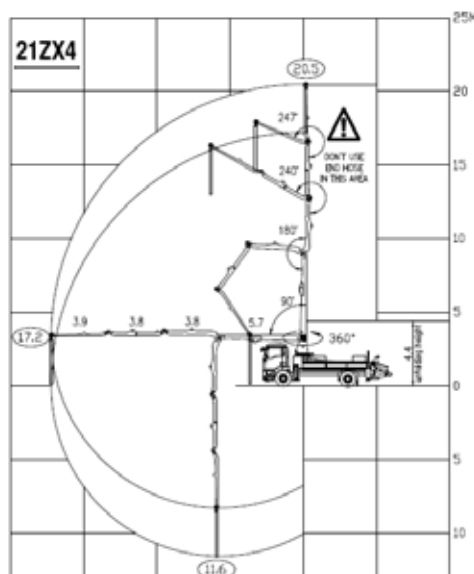


# 21X-4Z SPECIFICATIONS

## BOOM TYPE: 4-SECTION Z



## WORKING RANGE



## AXLE WEIGHTS

	LBS	KG
Front Axle Weight	10,800 lbs	4899 kg
Rear Axle Weight	27,360 lbs	12,410 kg
Total Weight *Based on Mack MR Chassis	38,160 lbs	17,309 kg

## BOOM HEIGHT & REACH

Vertical Reach	67' 3"	20.5 m
Horizontal Reach	56' 5"	17.2 m
Reach From Front Of Truck	47' 7"	14.5 m
Reach Depth	38' 1"	11.6 m
Unfolding Height	14' 5"	4.4 m

## BOOM SECTION ARTICULATION

1st Section Articulation	90°
2nd Section Articulation	180°
3rd Section Articulation	240°
4th Section Articulation	247°

## BOOM SECTION LENGTHS

1st Section Length	18' 8"	5.7 m
2nd Section Length	12' 6"	3.8 m
3rd Section Length	12' 6"	3.8 m
4th Section Length	12' 10"	3.9 m

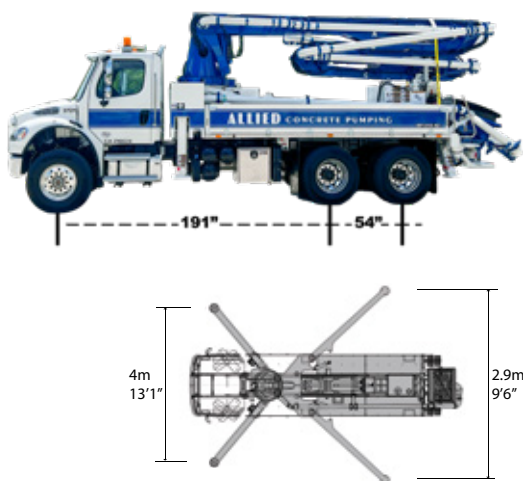
## GENERAL SPECIFICATIONS

Water Tank Capacity	132 gallons	500 litres
Pipeline Size (ID) Metric Ends	5"	125 mm
Rotation	360°	
End Hose Length	10'	3 m
End Hose Diameter	5"	125 mm
Outrigger Spread Front: Telescope Out	13' 1"	4 m
Outrigger Spread Rear: Swing Out	9' 6"	2.9 m

## PUMP SPECIFICATIONS

Output: Rod Side	122 yd <sup>3</sup> /hr	93 m <sup>3</sup> /hr
Output: Piston Side	76 yd <sup>3</sup> /hr	58 m <sup>3</sup> /hr
Pressure: Rod Side	1,334 psi	92 bar
Pressure: Piston Side	2,147 psi	148 bar
Material Cylinder Diameter	8"	200 mm
Max Strokes Per Minute	Rod Side Piston Side	31 19
Volume Control	Zero to Full	
Hopper Vibrator	Standard	
Hard-Chromed Material Cylinders	Standard	
Hydraulic System	Closed Loop	
Hydraulic System Pressure	5,075 psi	350 bar
Differential Cylinder Diameter	5"	130 mm
Rod Diameter	3"	80 mm
Maximum Size Aggregate	2.4"	60mm

## OVERALL DIMENSIONS AND OUTRIGGER SPREAD



Photos and drawings are for illustrative purposes only. Dimensions will vary with different truck makes, models and specifications. For available options, please contact the factory.

This product specification could be changed by DY Corporation without notice to improve the quality.

Truck Mounted Concrete Boom Pump

# 33X-5ZZ

**BUILT TO  
PERFORM**



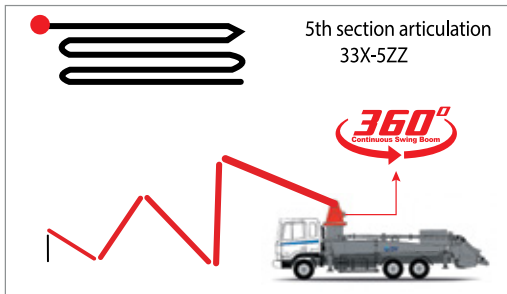
## 33X-5ZZ DETAILS

The 33X-5ZZ concrete boom pump is the ideal choice for residential and commercial construction job sites requiring less range and more mobility. This 33-meter concrete boom pump features a 360-degree, continuous swing, five-section, true-double Z boom that provides maximum versatility. The pump is designed to unfold and open in tight spaces and can unfold under a 19 foot ceiling height, making it perfect for working in and around existing structures as well as under bridge decks and other overhead obstructions.

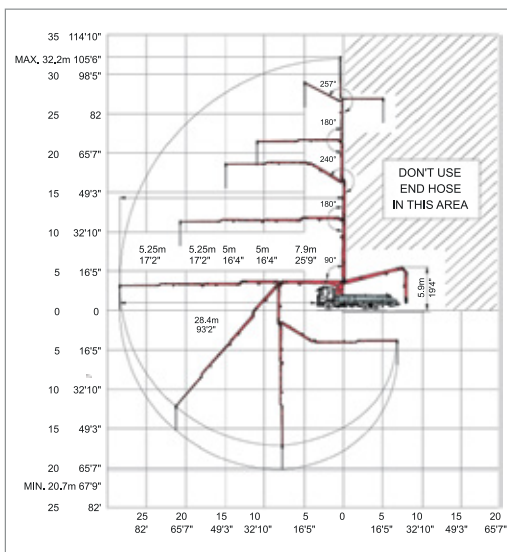


# 33X-5ZZ SPECIFICATIONS

## BOOM TYPE: 5-SECTION ZZ



## WORKING RANGE



## AXLE WEIGHTS

	LBS	KG
Front Axle Weight	16,000 lbs	7,257 kg
Rear Axle Weight	36,500 lbs	16,556 kg
Total Weight *Based on Mack MR Chassis	52,500 lbs	23,812 kg

## BOOM HEIGHT & REACH

Vertical Reach	105' 7"	32.2 m
Horizontal Reach	91' 6"	27.9 m
Reach From Front Of Truck	82' 7"	25.16 m
Reach Depth	67' 7"	20.6 m
Unfolding Height	19'	5.8 m

## BOOM SECTION ARTICULATION

1st Section Articulation	90°
2nd Section Articulation	180°
3rd Section Articulation	245°
4th Section Articulation	180°
5th Section Articulation	255°

## BOOM SECTION LENGTHS

1st Section Length	25' 11"	7.9 m
2nd Section Length	16' 5"	5 m
3rd Section Length	16' 5"	5 m
4th Section Length	17' 3"	5.25 m
5th Section Length	17' 3"	5.25 m

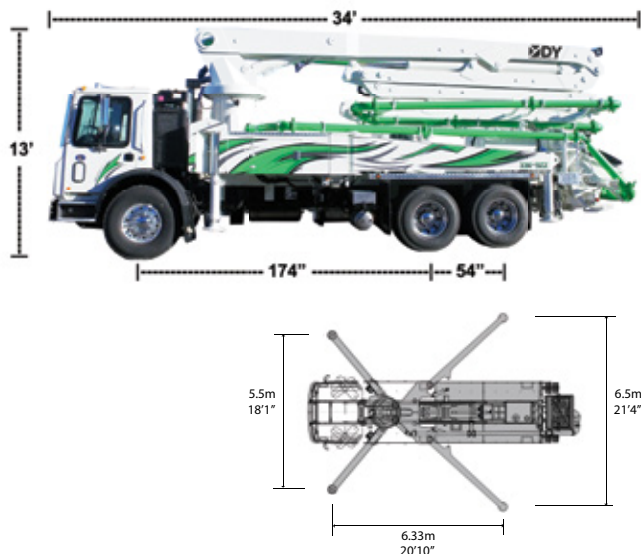
## GENERAL SPECIFICATIONS

Water Tank Capacity	132 gallons	500 litres
Pipeline Size (ID) Metric Ends	5"	125 mm
Rotation	360°	Continuous
End Hose Length	11' 6"	3.5 m
End Hose Diameter	5"	125 mm
Outrigger Spread Front: Telescope Out	18' 1"	5.5 m
Outrigger Spread Rear: Swing Out	21' 4"	6.5 m

## PUMP SPECIFICATIONS

Output: Rod Side	209 yd <sup>3</sup> /hr	160 m <sup>3</sup> /hr
Output: Piston Side	141 yd <sup>3</sup> /hr	108 m <sup>3</sup> /hr
Pressure: Rod Side	1,232 psi	85 bar
Pressure: Piston Side	1,886 psi	130 bar
Material Cylinder Diameter	9"	230 mm
Max Strokes Per Minute	Rod Side 31 Piston Side 31	
Volume Control	Zero to Full	
Hopper Vibrator	Standard	
Hard-Chromed Material Cylinders	Standard	
Hydraulic System	Closed Loop	
Hydraulic System Pressure	5,075 psi	350 bar
Differential Cylinder Diameter	5.5"	140 mm
Rod Diameter	3"	80 mm
Maximum Size Aggregate	2.4"	60mm

## OVERALL DIMENSIONS AND OUTRIGGER SPREAD



Photos and drawings are for illustrative purposes only. Dimensions will vary with different truck makes, models and specifications. For available options, please contact the factory.

This product specification could be changed by DY Corporation without notice to improve the quality.

Truck Mounted Concrete Boom Pump

# 37X-4R

**BUILT TO  
PERFORM**



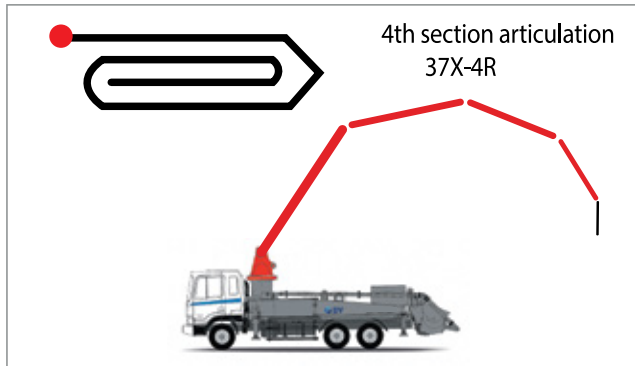
## 37X-4R DETAILS

The roll and fold boom is a time-tested design favored by many seasoned and experienced drivers, as well as companies looking for equipment that's easy to operate. With a 4-section boom and X-style outriggers, the 37X4R offers outstanding versatility and great return on investment for your company.

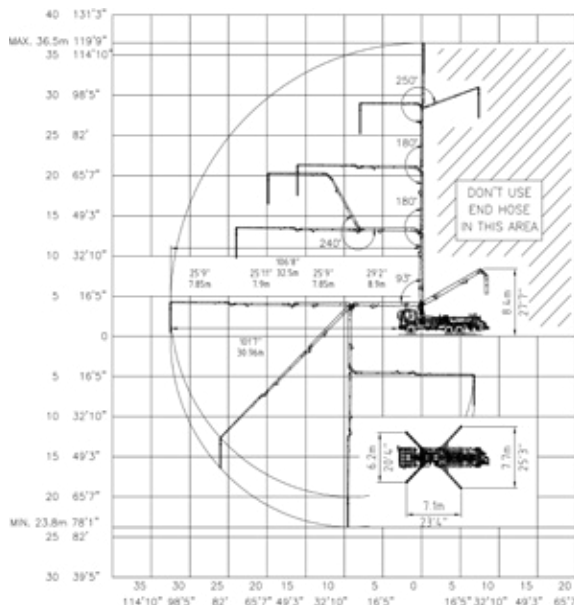


# 37X-4R SPECIFICATIONS

## BOOM TYPE: 4-SECTION ROLL AND FOLD



## WORKING RANGE



## AXLE WEIGHTS

	LBS	KG
Front Axle Weight	18,386 lbs	8,339 kg
Rear Axle Weight	39,484 lbs	17,909 kg
Total Weight *Based on WS Chassis	59,870 lbs	26,249 kg

## BOOM HEIGHT & REACH

Vertical Reach	119' 9"	36.5 m
Horizontal Reach	106' 8"	32.5 m
Reach From Front Of Truck	101' 7"	30.96 m
Reach Depth	78' 1"	23.8 m
Unfolding Height	27' 7"	8.4 m

## BOOM SECTION ARTICULATION

1st Section Articulation	93°
2nd Section Articulation	180°
3rd Section Articulation	240°
4th Section Articulation	250°

## BOOM SECTION LENGTHS

1st Section Length	29' 9"	8.9 m
2nd Section Length	25' 9"	7.85 m
3rd Section Length	25' 11"	7.9 m
4th Section Length	25' 9"	7.85 m

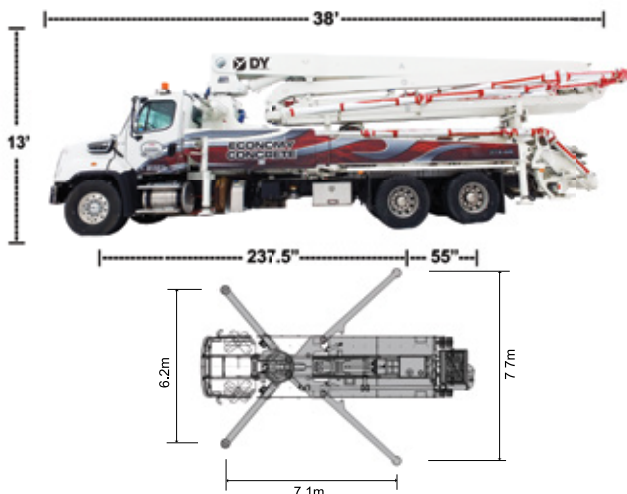
## GENERAL SPECIFICATIONS

Water Tank Capacity	132 gallons	500 litres
Pipeline Size (ID) Metric Ends	5"	125 mm
Rotation		
End Hose Length	11' 6"	3.5 m
End Hose Diameter	5"	125 mm
Outrigger Spread Front: Telescope Out	20' 4"	6.2 m
Outrigger Spread Rear: Swing Out	25' 3"	7.7 m

## PUMP SPECIFICATIONS

Output: Rod Side	209 yd <sup>3</sup> /hr	160 m <sup>3</sup> /hr
Output: Piston Side	141 yd <sup>3</sup> /hr	108 m <sup>3</sup> /hr
Pressure: Rod Side	1,262 psi	87 bar
Pressure: Piston Side	1,886 psi	130 bar
Material Cylinder Diameter	9"	230 mm
Max Strokes Per Minute	Rod Side 29 Piston Side 21	
Volume Control	Zero to Full	
Hopper Vibrator	Standard	
Hard-Chromed Material Cylinders	Standard	
Hydraulic System	Closed Loop	
Hydraulic System Pressure	5,075 psi	350 bar
Differential Cylinder Diameter	5.5"	140 mm
Rod Diameter	3"	80 mm
Maximum Size Aggregate	2.4"	60 mm

## OVERALL DIMENSIONS AND OUTRIGGER SPREAD



Photos and drawings are for illustrative purposes only. Dimensions will vary with different truck makes, models and specifications. For available options, please contact the factory.

This product specification could be changed by DY Corporation without notice to improve the quality.

Truck Mounted Concrete Boom Pump

# 38X-5ZR

**BUILT TO  
PERFORM**



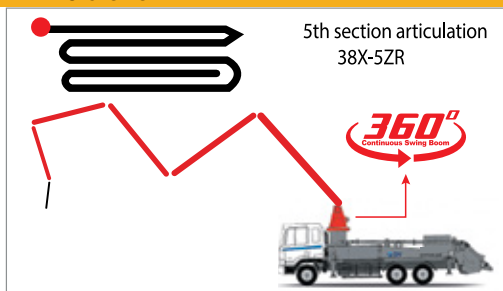
## 38X-5ZR DETAILS

Our 38-meter boom pump is an exceptional choice for builders and contractors with both residential and commercial jobs. The ZR boom is designed for high-productivity with the ability to deliver a consistent flow of concrete. The narrow profile of our 38X-5ZR allows for maneuvering around urban areas and working in tight and confined spaces. An additional feature of our concrete boom trucks is our 360-degree rotating boom which eliminates the need for excessive maneuvering of the truck around the job site.

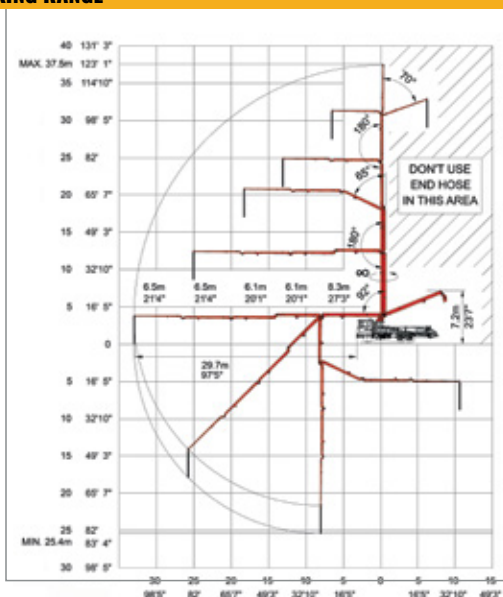


# 38X-5ZR SPECIFICATIONS

## BOOM TYPE: 5-SECTION ZR



## WORKING RANGE



## AXLE WEIGHTS

	LBS	KG
Front Axle Weight	18,386 lbs	8,339 kg
Rear Axle Weight	39,484 lbs	17,909 kg
Total Weight *Based on WS Chassis	57,870 lbs	26,249 kg

## BOOM HEIGHT & REACH

Vertical Reach	123' 4"	37.5 m
Horizontal Reach	109' 11"	33.5 m
Reach From Front Of Truck	97' 5"	29.7 m
Reach Depth	83' 4"	25.4 m
Unfolding Height	23' 7"	7.2 m

## BOOM SECTION ARTICULATION

1st Section Articulation	92°
2nd Section Articulation	180°
3rd Section Articulation	245°
4th Section Articulation	180°
5th Section Articulation	250°

## BOOM SECTION LENGTHS

1st Section Length	27' 3"	8.3 m
2nd Section Length	20' 1"	6.1 m
3rd Section Length	20' 1"	6.1 m
4th Section Length	21' 4"	6.5 m
5th Section Length	21' 4"	6.5 m

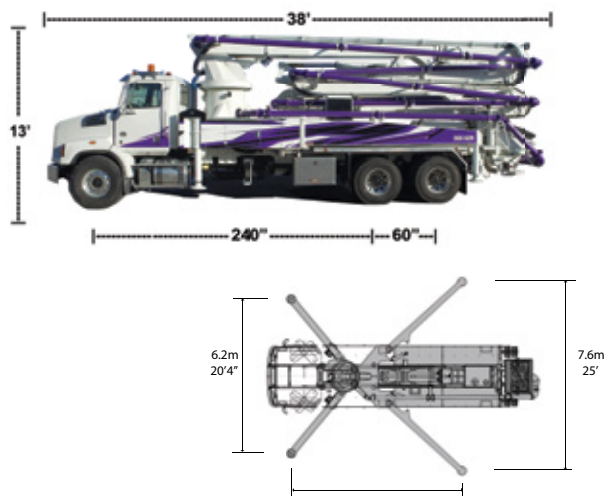
## GENERAL SPECIFICATIONS

Water Tank Capacity	132 gallons	500 litres
Pipeline Size (ID) Metric Ends	5"	125 mm
Rotation	360°	Continuous
End Hose Length	11' 6"	3.5 m
End Hose Diameter	5"	125 mm
Outrigger Spread Front: Telescope Out	20' 4"	6.2 m
Outrigger Spread Rear: Swing Out	25'	7.6 m

## PUMP SPECIFICATIONS

Output: Rod Side	209 yd <sup>3</sup> /hr	160 m <sup>3</sup> /hr
Output: Piston Side	141 yd <sup>3</sup> /hr	108 m <sup>3</sup> /hr
Pressure: Rod Side	1,232 psi	85 bar
Pressure: Piston Side	1,886 psi	130 bar
Material Cylinder Diameter	9"	230 mm
Max Strokes Per Minute	Rod Side Piston Side	31 21
Volume Control	Zero to Full	
Hopper Vibrator	Standard	
Hard-Chromed Material Cylinders	Standard	
Hydraulic System	Closed Loop	
Hydraulic System Pressure	5,075 psi	350 bar
Differential Cylinder Diameter	5.5"	140 mm
Rod Diameter	3"	80 mm
Maximum Size Aggregate	2.4"	60 mm

## OVERALL DIMENSIONS AND OUTRIGGER SPREAD



Photos and drawings are for illustrative purposes only. Dimensions will vary with different truck makes, models and specifications. For available options, please contact the factory.

This product specification could be changed by DY Corporation without notice to improve the quality.

Truck Mounted Concrete Boom Pump

# 40X-5ZR

**BUILT TO  
PERFORM**



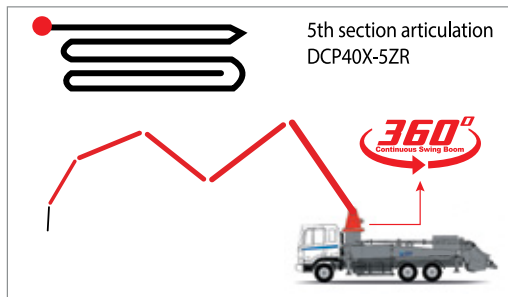
## 40X-5ZR DETAILS

Maximum versatility is the defining characteristic of our 40-meter concrete boom pump which maximizes the three axle chassis with the longest boom reach possible creating a lower truck chassis cost. As with our 40X-5ZR, the mid-size ZR boom is perfect for residential and commercial concrete pouring projects. Featuring a 360-degree continuous swing boom, the 40X-5ZR is highly maneuverable and can reach places that are inaccessible to less agile machines. Your crew will be able to complete jobs faster and more efficiently, which will have a positive impact on your company's bottom line.

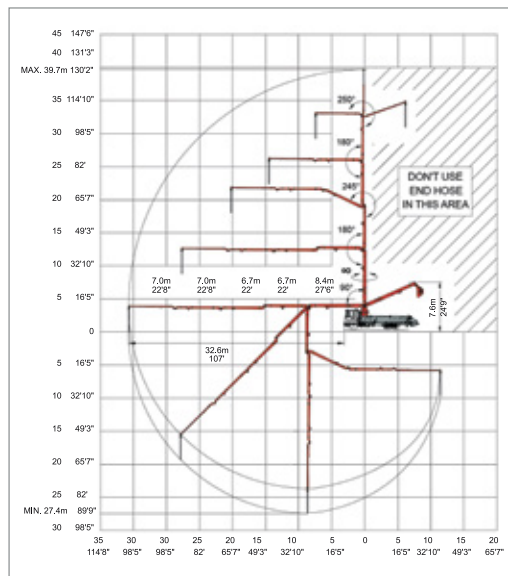


# 40X-5ZR SPECIFICATIONS

## BOOM TYPE: 5-SECTION ZR



## WORKING RANGE



## AXLE WEIGHTS

	LBS	KG
Front Axle Weight	19,141 lbs	8,682 kg
Rear Axle Weight	41,299 lbs	18,733 kg
Total Weight *Based on WS Chassis	60,440 lbs	27,415 kg

## BOOM HEIGHT & REACH

Vertical Reach	130' 2"	39.7 m
Horizontal Reach	117' 5"	35.8 m
Reach From Front Of Truck	107'	32.6 m
Reach Depth	89' 9"	27.4 m
Unfolding Height	24' 9"	7.6 m

## BOOM SECTION ARTICULATION

1st Section Articulation	90°
2nd Section Articulation	180°
3rd Section Articulation	245°
4th Section Articulation	180°
5th Section Articulation	250°

## BOOM SECTION LENGTHS

1st Section Length	27' 6"	8.4 m
2nd Section Length	22'	6.7 m
3rd Section Length	22'	6.7 m
4th Section Length	26' 3"	7 m
5th Section Length	26' 3"	7 m

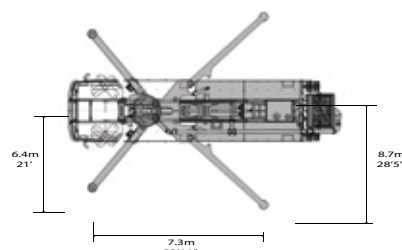
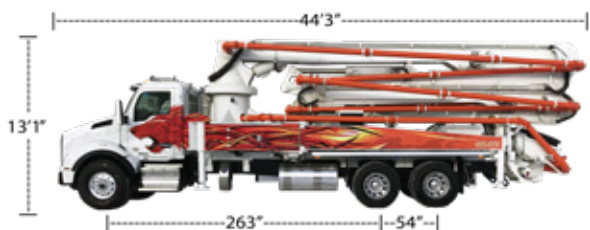
## GENERAL SPECIFICATIONS

Water Tank Capacity	132 gallons	500 litres
Pipeline Size (ID) Metric Ends	5"	125 mm
Rotation	360°	Continuous
End Hose Length	11' 6"	3.5 m
End Hose Diameter	5"	125 mm
Outrigger Spread Front: Telescope Out	21'	6.4 m
Outrigger Spread Rear: Swing Out	28' 5"	8.7 m

## PUMP SPECIFICATIONS

Output: Rod Side	209 yd <sup>3</sup> /hr	160 m <sup>3</sup> /hr
Output: Piston Side	141 yd <sup>3</sup> /hr	108 m <sup>3</sup> /hr
Pressure: Rod Side	1,232 psi	85 bar
Pressure: Piston Side	1,886 psi	130 bar
Material Cylinder Diameter	9"	230 mm
Max Strokes Per Minute	Rod Side Piston Side	31 21
Volume Control	Zero to Full	
Hopper Vibrator	Standard	
Hard-Chromed Material Cylinders	Standard	
Hydraulic System	Closed Loop	
Hydraulic System Pressure	5,075 psi	350 bar
Differential Cylinder Diameter	5.5"	140 mm
Rod Diameter	3"	80 mm
Maximum Size Aggregate	2.4"	60 mm

## OVERALL DIMENSIONS AND OUTRIGGER SPREAD



Photos and drawings are for illustrative purposes only. Dimensions will vary with different truck makes, models and specifications. For available options, please contact the factory.

This product specification could be changed by DY Corporation without notice to improve the quality.

Truck Mounted Concrete Boom Pump

# 43X-5RZ

**BUILT TO  
PERFORM**



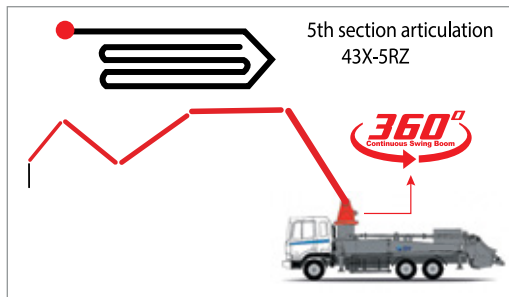
## 43X-5RZ DETAILS

When you work in concrete pumping and construction, it pays to have equipment that offers the versatility and performance you need to tackle a variety of jobs efficiently. When you're looking for a solution for both residential and commercial projects, an RZ 43-meter concrete boom pump is a must-have for your fleet.

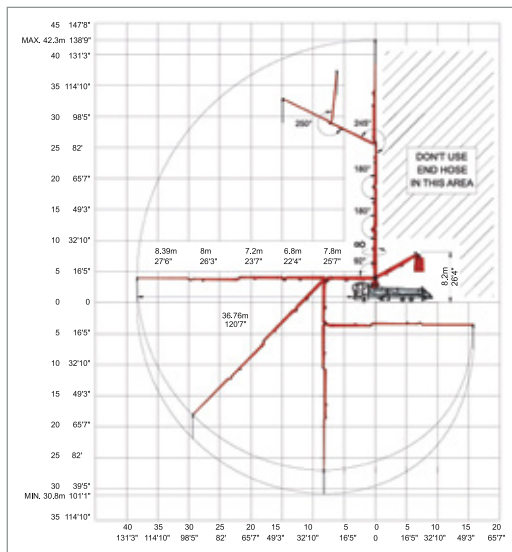


# 43X-5RZ SPECIFICATIONS

## BOOM TYPE: 5-SECTION ZR



## WORKING RANGE



## AXLE WEIGHTS

	LBS	KG
Front Axle Weight	28,990 lbs	13,150 kg
Rear Axle Weight	29,176 lbs	17,770 kg
Total Weight *Based on Mack Tandem/Tandem Chassis	68,166 lbs	30,920 kg

## BOOM HEIGHT & REACH

Vertical Reach	138' 9"	42.3 m
Horizontal Reach	125' 8"	38.3 m
Reach From Front Of Truck	120' 7"	36.76 m
Reach Depth	101' 1"	30.8 m
Unfolding Height	26' 11"	8.2 m

## BOOM SECTION ARTICULATION

1st Section Articulation	92°
2nd Section Articulation	180°
3rd Section Articulation	180°
4th Section Articulation	245°
5th Section Articulation	250°

## BOOM SECTION LENGTHS

1st Section Length	25' 7"	7.8 m
2nd Section Length	22' 4"	6.8 m
3rd Section Length	23' 7"	7.2 m
4th Section Length	26' 3"	8 m
5th Section Length	27' 6"	8.39 m

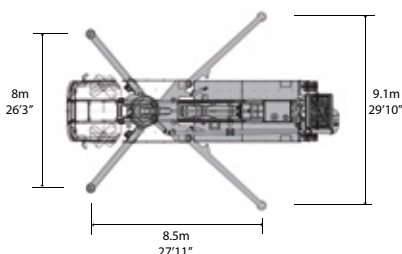
## GENERAL SPECIFICATIONS

Water Tank Capacity	211 gallons	800 litres
Pipeline Size (ID) Metric Ends	5"	125 mm
Rotation	360°	Continuous
End Hose Length	11' 6"	3.5 m
End Hose Diameter	5"	125 mm
Outrigger Spread Front: Telescope Out	26' 3"	8 m
Outrigger Spread Rear: Swing Out	29' 10"	9.1 m

## PUMP SPECIFICATIONS

Output: Rod Side	209 yd <sup>3</sup> /hr	160 m <sup>3</sup> /hr
Output: Piston Side	141 yd <sup>3</sup> /hr	108 m <sup>3</sup> /hr
Pressure: Rod Side	1,232 psi	85 bar
Pressure: Piston Side	1,886 psi	130 bar
Material Cylinder Diameter	9"	230 mm
Max Strokes Per Minute	Rod Side: 31 Piston Side: 21	
Volume Control	Zero to Full	
Hopper Vibrator	Standard	
Hard-Chromed Material Cylinders	Standard	
Hydraulic System	Closed Loop	
Hydraulic System Pressure	5,075 psi	350 bar
Differential Cylinder Diameter	5.5"	140 mm
Rod Diameter	3"	80 mm
Maximum Size Aggregate	2.4"	60 mm

## OVERALL DIMENSIONS AND OUTRIGGER SPREAD



Photos and drawings are for illustrative purposes only. Dimensions will vary with different truck makes, models and specifications. For available options, please contact the factory.

This product specification could be changed by DY Corporation without notice to improve the quality.



Truck Mounted Concrete Boom Pump

# 48X-5RZ

**BUILT TO  
PERFORM**



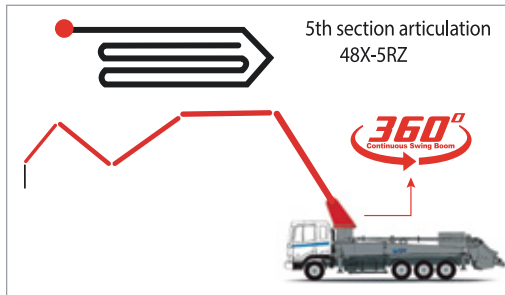
## 48X-5RZ DETAILS

The most significant and challenging commercial construction projects call for innovative solutions that save time and money while delivering results. Our 5-section, 48-meter concrete boom pumps help you get more work done in less time, lowering your company's manual labor requirements so you can better allocate your assets. Now available with optional special order 10" material cylinders.

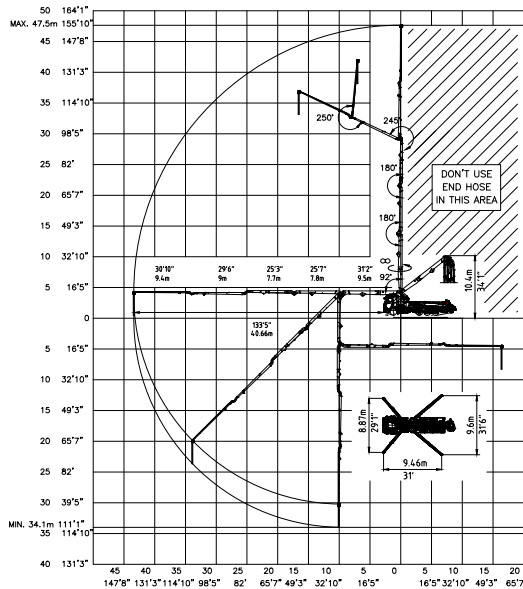


# 48X-5RZ SPECIFICATIONS

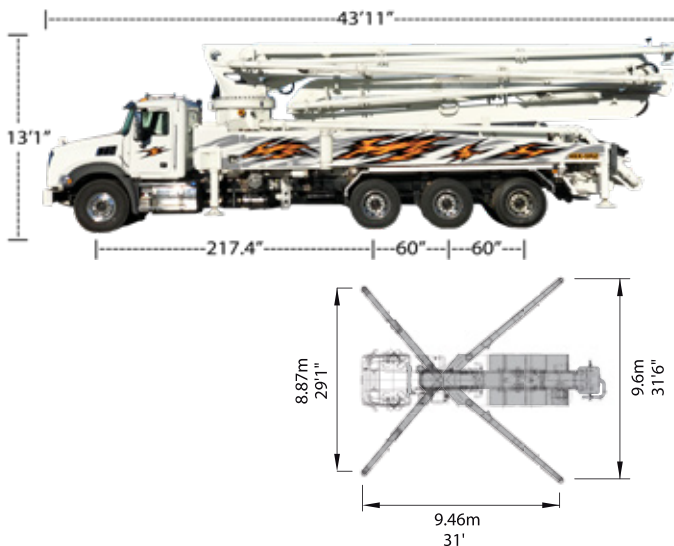
## BOOM TYPE: 5-SECTION RZ



## WORKING RANGE



## OVERALL DIMENSIONS AND OUTRIGGER SPREAD



## AXLE WEIGHTS

	LBS	KG
Front Axle Weight	17,863 lbs	8,102 kg
Rear Axle Weight	56,828 lbs	25,777 kg
Total Weight	74,691 lbs	33,879 kg
*Based on Mack Granite Chassis		

## BOOM HEIGHT & REACH

Vertical Reach	155' 10"	47.5 m
Horizontal Reach	141' 9"	43.2 m
Reach From Front Of Truck	133' 5"	40.66 m
Reach Depth	111' 11"	34.1 m
Unfolding Height	34' 1"	10.4 m

## BOOM SECTION ARTICULATION

1st Section Articulation	92°
2nd Section Articulation	180°
3rd Section Articulation	180°
4th Section Articulation	245°
5th Section Articulation	250°

## BOOM SECTION LENGTHS

1st Section Length	31' 2"	9.5 m
2nd Section Length	25' 7"	7.8 m
3rd Section Length	25' 3"	7.7 m
4th Section Length	29' 6"	9 m
5th Section Length	30' 10"	9.4 m

## GENERAL SPECIFICATIONS

Water Tank Capacity	211 gallons	800 litres
Pipeline Size (ID) Metric Ends	5"	125 mm
Rotation	360°	Continuous
End Hose Length	11' 6"	3.5 m
End Hose Diameter	5"	125 mm
Outrigger Spread Front: Telescope Out	29' 1"	8.87 m
Outrigger Spread Rear: Swing Out	31' 6"	9.6 m

## PUMP SPECIFICATIONS

Output: Rod Side	209 yd <sup>3</sup> /hr	160 m <sup>3</sup> /hr
Output: Piston Side	141 yd <sup>3</sup> /hr	108 m <sup>3</sup> /hr
Pressure: Rod Side	1,232 psi	85 bar
Pressure: Piston Side	1,886 psi	130 bar
Material Cylinder Diameter	9"	230 mm
Max Strokes Per Minute	Rod Side: 31 Piston Side: 21	
Volume Control	Zero to Full	
Hopper Vibrator	Standard	
Hard-Chromed Material Cylinders	Standard	
Hydraulic System	Closed Loop	
Hydraulic System Pressure	5,075 psi	350 bar
Differential Cylinder Diameter	5.5"	140 mm
Rod Diameter	3"	80 mm
Maximum Size Aggregate	2.4"	60 mm

Photos and drawings are for illustrative purposes only. Dimensions will vary with different truck makes, models and specifications. For available options, please contact the factory.

This product specification could be changed by DY Corporation without notice to improve the quality.

Truck Mounted Concrete Boom Pump

# 52X-5RZ

**BUILT TO  
PERFORM**



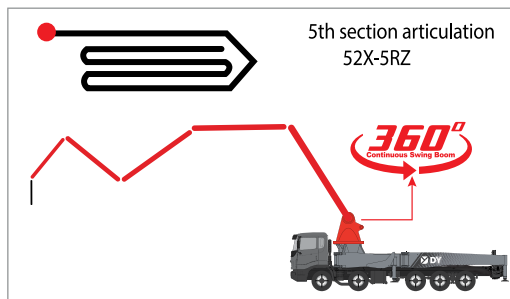
## 52X-5RZ DETAILS

The 52X-5RZ concrete boom pump offers the optimal size and range for commercial and industrial concrete pouring projects. This powerful, highly advanced, five-section concrete boom pump is equipped with a 360-degree continuous swing boom for maximum flexibility and mobility at the job site even in the most challenging work environments, making it the ideal choice for concrete pumping. You'll be able to meet any project demand and complete jobs more quickly and efficiently than ever. Now available with optional special order 10" material cylinders.

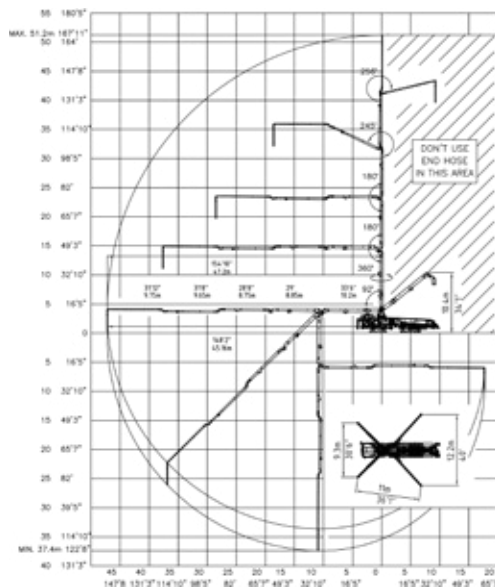


# 52X-5RZ SPECIFICATIONS

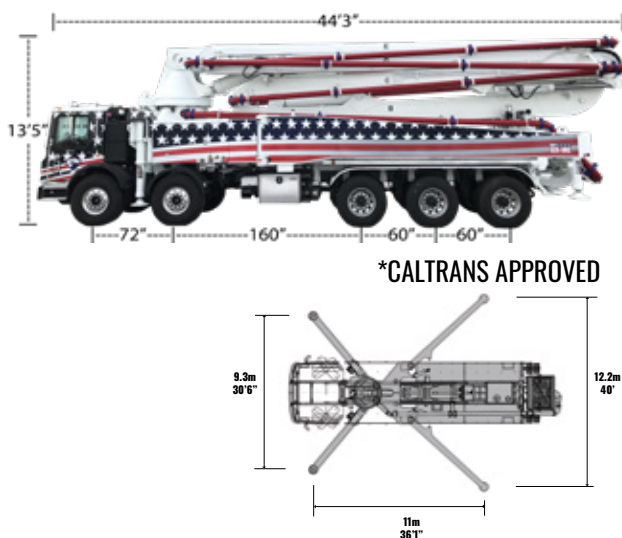
## BOOM TYPE: 5-SECTION RZ



## WORKING RANGE



## OVERALL DIMENSIONS AND OUTRIGGER SPREAD



## AXLE WEIGHTS

	LBS	KG
Front Axle Weight	37,522 lbs	17,020 kg
Rear Axle Weight	54,564 lbs	24,720 kg
Total Weight	92,087 lbs	41,770 kg
*Based on Mack MR Tandem/Tri Chassis		

## BOOM HEIGHT & REACH

Vertical Reach	167' 11"	47.5 m
Horizontal Reach	154' 10"	43.2 m
Reach From Front Of Truck	148' 2"	40.66 m
Reach Depth	122' 8"	34.1 m
Unfolding Height	34' 1"	10.4 m

## BOOM SECTION ARTICULATION

1st Section Articulation	92°
2nd Section Articulation	180°
3rd Section Articulation	180°
4th Section Articulation	245°
5th Section Articulation	256°

## BOOM SECTION LENGTHS

1st Section Length	33' 6"	10.2 m
2nd Section Length	29'	8.85 m
3rd Section Length	28' 8"	8.75 m
4th Section Length	31' 8"	9.65 m
5th Section Length	31' 12"	9.75 m

## GENERAL SPECIFICATIONS

Water Tank Capacity	211 gallons	800 litres
Pipeline Size (ID) Metric Ends	5"	125 mm
Rotation	360°	Continuous
End Hose Length	11' 6"	3.5 m
End Hose Diameter	5"	125 mm
Outrigger Spread Front: Telescope Out	29' 1"	8.87 m
Outrigger Spread Rear: Swing Out	31' 6"	9.6 m

## PUMP SPECIFICATIONS

Output: Rod Side	235 yd <sup>3</sup> /hr	180 m <sup>3</sup> /hr
Output: Piston Side	158 yd <sup>3</sup> /hr	121 m <sup>3</sup> /hr
Pressure: Rod Side	1,232 psi	85 bar
Pressure: Piston Side	1,886 psi	130 bar
Material Cylinder Diameter	9"	230 mm
Max Strokes Per Minute	Rod Side 34 Piston Side 23	
Volume Control	Zero to Full	
Hopper Vibrator	Standard	
Hard-Chromed Material Cylinders	Standard	
Hydraulic System	Closed Loop	
Hydraulic System Pressure	5,075 psi	350 bar
Differential Cylinder Diameter	5.5"	140 mm
Rod Diameter	3"	80 mm
Maximum Size Aggregate	2.4"	60 mm

Photos and drawings are for illustrative purposes only. Dimensions will vary with different truck makes, models and specifications. For available options, please contact the factory.

This product specification could be changed by DY Corporation without notice to improve the quality.

Truck Mounted Concrete Boom Pump

# 57X-6RZ

**BUILT TO  
PERFORM**



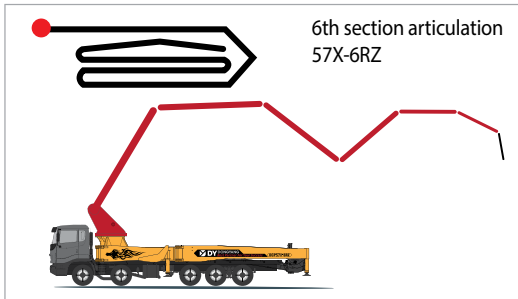
## 57X-6RZ DETAILS

This 57-meter concrete boom pump provides a x-style outrigger layout for exceptional jobsite mobility. The 6-section design with simplified radio remote controls make it easier for operators to move the boom into the optimal position for less labor intensive pumping of concrete. It's ideal for pumping concrete to upper floors of a building for walls and columns, as well as for foundations, decks, parking structures and more. Now available with optional special order 10" material cylinders.

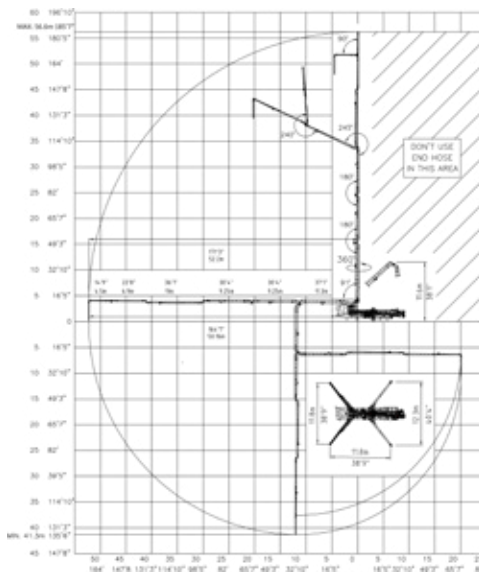


# 57X-6RZ SPECIFICATIONS

## BOOM TYPE: 6-SECTION RZ



## WORKING RANGE



## AXLE WEIGHTS

	LBS	KG
Front Axle Weight	36,706 lbs	16,650 kg
Rear Axle Weight	58,841 lbs	26,690 kg
Total Weight	95,504 lbs	43,320 kg
*Based on Mack MR Tandem/Tri Chassis		

## BOOM HEIGHT & REACH

Vertical Reach	185' 4"	56.5 m
Horizontal Reach	172' 3"	52.5 m
Reach From Front Of Truck	165' 7"	50.46 m
Reach Depth	136' 6"	41.6 m
Unfolding Height	38' 1"	11.6 m

## BOOM SECTION ARTICULATION

1st Section Articulation	91°
2nd Section Articulation	180°
3rd Section Articulation	180°
4th Section Articulation	245°
5th Section Articulation	240°
6th Section Articulation	90°

## BOOM SECTION LENGTHS

1st Section Length	37' 1"	11.2 m
2nd Section Length	30' 4"	9.25 m
3rd Section Length	30' 4"	9.25 m
4th Section Length	36' 1"	11 m
5th Section Length	22' 8"	6.9 m
6th Section Length	14' 9"	4.8 m

## GENERAL SPECIFICATIONS

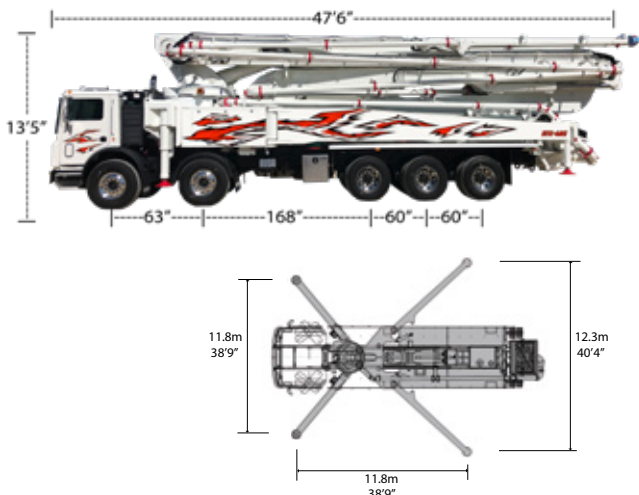
Water Tank Capacity	211 gallons	800 litres
Pipeline Size (ID) Metric Ends	5"	125 mm
Rotation	360°	
End Hose Length	11' 6"	3.5 m
End Hose Diameter	5"	125 mm
Outrigger Spread Front: Telescope Out	38' 9"	11.8 m
Outrigger Spread Rear: Swing Out	40' 4"	12.3 m

## PUMP SPECIFICATIONS

Output: Rod Side	235 yd <sup>3</sup> /hr	180 m <sup>3</sup> /hr
Output: Piston Side	158 yd <sup>3</sup> /hr	121 m <sup>3</sup> /hr
Pressure: Rod Side	1,232 psi	85 bar
Pressure: Piston Side	1,886 psi	130 bar
Material Cylinder Diameter	9"	230 mm
Max Strokes Per Minute	Rod Side: 34 Piston Side: 23	
Volume Control	Zero to Full	
Hopper Vibrator	Standard	
Hard-Chromed Material Cylinders	Standard	
Hydraulic System	Closed Loop	
Hydraulic System Pressure	5,075 psi	350 bar
Differential Cylinder Diameter	5.5"	140 mm
Rod Diameter	3"	80 mm
Maximum Size Aggregate	2.4"	60 mm

Photos and drawings are for illustrative purposes only. Dimensions will vary with different truck makes, models and specifications. For available options, please contact the factory.

## OVERALL DIMENSIONS AND OUTRIGGER SPREAD



This product specification could be changed by DY Corporation without notice to improve the quality.

Truck Mounted Concrete Boom Pump

# 63X-5RZ

**BUILT TO  
PERFORM**



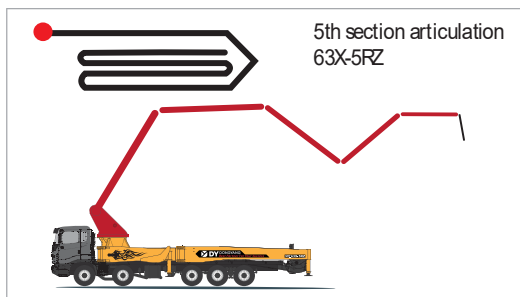
## 63X-5RZ DETAILS

Designed to meet the demands of large construction sites, the 63-meter provides a 5-section boom and X-style outriggers. Ideal for large scale projects such as sporting stadiums, shopping centers, and tall buildings. The 63X-5RZ is capable of pumping your largest jobs. Available with optional special order 10" material cylinders.

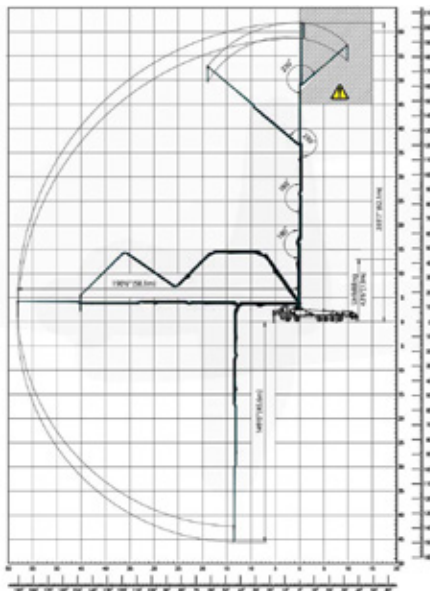


# 63X-5RZ SPECIFICATIONS

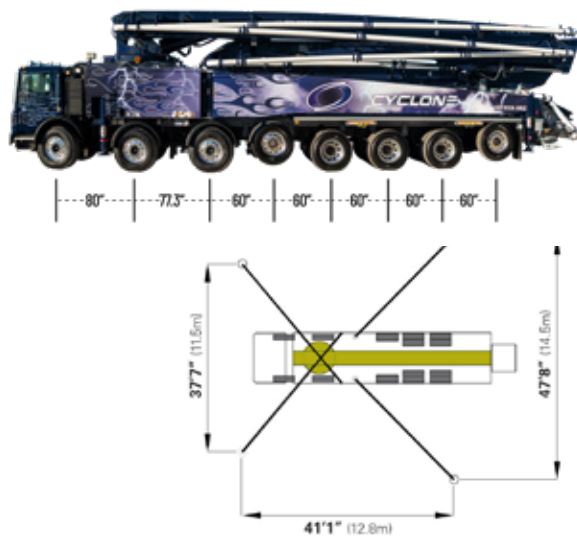
## BOOM TYPE: 5-SECTION RZ



## WORKING RANGE



## OVERALL DIMENSIONS AND OUTRIGGER SPREAD



## AXLE WEIGHTS

	LBS	KG
Front Axle Weight	15,830 lbs	7,180 kg
Rear Axle Weight	15,830 lbs	7,180 kg
Total Weight	126,640 lbs	57,443 kg
*Based on Mack Terra Pro pictured		

## BOOM HEIGHT & REACH

Vertical Reach	203' 7"	62.1 m
Horizontal Reach	189' 3"	57.7 m
Reach From Front Of Truck	183' 9"	56.06 m
Reach Depth	149' 6"	45.6 m
Unfolding Height	42' 7"	13 m

## BOOM SECTION ARTICULATION

1st Section Articulation	91°
2nd Section Articulation	180°
3rd Section Articulation	180°
4th Section Articulation	230°
5th Section Articulation	230°

## BOOM SECTION LENGTHS

1st Section Length	41"	12.5 m
2nd Section Length	33' 5"	10.2 m
3rd Section Length	33' 1"	10.1 m
4th Section Length	41"	12.5 m
5th Section Length	42"	12.8 m

## GENERAL SPECIFICATIONS

Water Tank Capacity	132 gallons	500 litres
Pipeline Size (ID) Metric Ends	5"	125 mm
Rotation	360°	Continuous
End Hose Length	11' 6"	3.5 m
End Hose Diameter	5"	125 mm
Outrigger Spread Front: Telescope Out	37' 7"	11.5 m
Outrigger Spread Rear: Swing Out	47' 6"	14.5 m

## PUMP SPECIFICATIONS

Output: Rod Side	235 yd <sup>3</sup> /hr	180 m <sup>3</sup> /hr
Output: Piston Side	158 yd <sup>3</sup> /hr	121 m <sup>3</sup> /hr
Pressure: Rod Side	1,232 psi	85 bar
Pressure: Piston Side	1,886 psi	130 bar
Material Cylinder Diameter	9"	230 mm
Max Strokes Per Minute	Rod Side 34 Piston Side 23	
Volume Control	Zero to Full	
Hopper Vibrator	Standard	
Hard-Chromed Material Cylinders	Standard	
Hydraulic System	Closed Loop	
Hydraulic System Pressure	5,075 psi	350 bar
Differential Cylinder Diameter	5.5"	140 mm
Rod Diameter	3"	80 mm
Maximum Size Aggregate	2.4"	60 mm

Photos and drawings are for illustrative purposes only. Dimensions will vary with different truck makes, models and specifications. For available options, please contact the factory.

This product specification could be changed by DY Corporation without notice to improve the quality.



**BUILT TO  
PERFORM**



# CHASSIS OPTIONS

---



## **MACK** TerraPro Chassis

The TerraPro Cabover delivers a rugged exterior, comfortable interior, superior visibility on all sides and Mack® Truck toughness for the construction industry.



## **MACK** Granite Chassis

Mack® Granite is the unyielding foundation on any jobsite. One of the most popular and proven trucks on the road, Granite has the strength to get the job done right and the comfort to keep drivers powering through with true grit.



## **KENWORTH** T880 Chassis

With the Kenworth T880, you've got a dependable, versatile vehicle capable of performing your toughest jobs. The work you do requires everything you've got and then some. Same for your trucks and the people who drive them. With the T880, you've got a dependable, versatile vehicle capable of performing your toughest jobs. Day in, day out. A truck designed at its core with the strength, stamina and operating economy you need to move your business ahead.



## **WESTERN STAR** 47X/49X Chassis

The all new Western Star 47X/49X specifically meets the demanding needs of vocational applications and today's tightening budgets. And they did it with input from you the people who actually do the jobs. After all, no one knows what you need better than you do. Hand built with an unmatched attention to detail, just like Western Star has done for over 40 years. Durable, reliable and rugged, designed to be lighter weight to save you money today and for years to come.



## **FREIGHTLINER** M2/108SD/114SD Chassis

The Freightliner M-2 started out as a lightweight, less expensive option for our small boom pumps. With superior visibility, comfort and style it was quickly discovered that this was a truck operators enjoy driving. They ride beautifully and are quiet inside as you drive down the road; it's a comfort level you might find in a newer pick-up.



## **PETERBILT** Chassis

No other truck brings quality, durability, reliability and performance to the vocational market like a Peterbilt. Inside and out, Peterbilt's vocational vehicles are built to endure the most challenging work environments, providing lasting value and helping make your business a profitable one.

Truck Mounted Concrete Boom Pump

# 57X-6RZ

**BUILT TO  
PERFORM**





# 24/7 CUSTOMER SUPPORT

**ACROSS NORTH AMERICA, YOU CAN COUNT ON DY CONCRETE PUMPS CUSTOMER SUPPORT.**

We understand that time is precious, and nothing is more critical than continual on-site support. DY Concrete Pumps guarantees quick responses and immediate solutions. Trust our expert staffs combined industry experience of over 400 years to serve you and your business efficiently, professionally, and promptly.

**DY CONCRETE PUMPS STARTS WITH QUALITY MANUFACTURING FOR EVERY UNIT AND BACKS IT UP WITH:**

- 🌐 OVER THE PHONE TECHNICAL SUPPORT
- 🌐 REGIONAL FIELD SERVICE PERSONNEL
- 🌐 COMPLETE START UP ASSISTANCE
- 🌐 OVERNIGHT DY REPLACEMENT PARTS



# DY PARTS

## WE FEATURE A DEDICATED PARTS DEPARTMENT IN EVERY LOCATION

that carries an extensive inventory of all the parts and components you need to keep your pumps up and running.

All OEM DY replacement parts offer the same exceptional quality as the originals to deliver relentless performance in even the most extreme operating conditions.



## WE OFFER A COMPLETE SELECTION OF PUMP REPLACEMENT PARTS

While we design, engineer and construct all DY products to provide many years of reliable service, you may still need to replace worn or damaged parts as well as OEM DY wear parts and twin wall boom systems to keep your pump in peak operating condition.

# **BUILT TO *PERFORM***



# IF YOU CAN DREAM IT WE CAN MAKE IT!

We offer full customization  
of the entire pump!

Contact us today to get started  
on your dream machine.

**DY**  
Concrete Pumps Inc.  
www.dyconcretepumps.com  
682-273-0555

**ZACHINATOR**



Pantone 311C  
"Jaguar Blue"



904-219-8779

1-844-397-8677  
www.DYConcretePumps.com

f o in ▶  
**DYConcretePumps**

# COME VISIT OUR BRAND NEW TEXAS HEADQUARTERS



**Featuring Texas' only  
Concrete Pump Service Center  
& the Largest Paint Booth in the South.**

**See the facility and meet the  
team that builds your pump!**

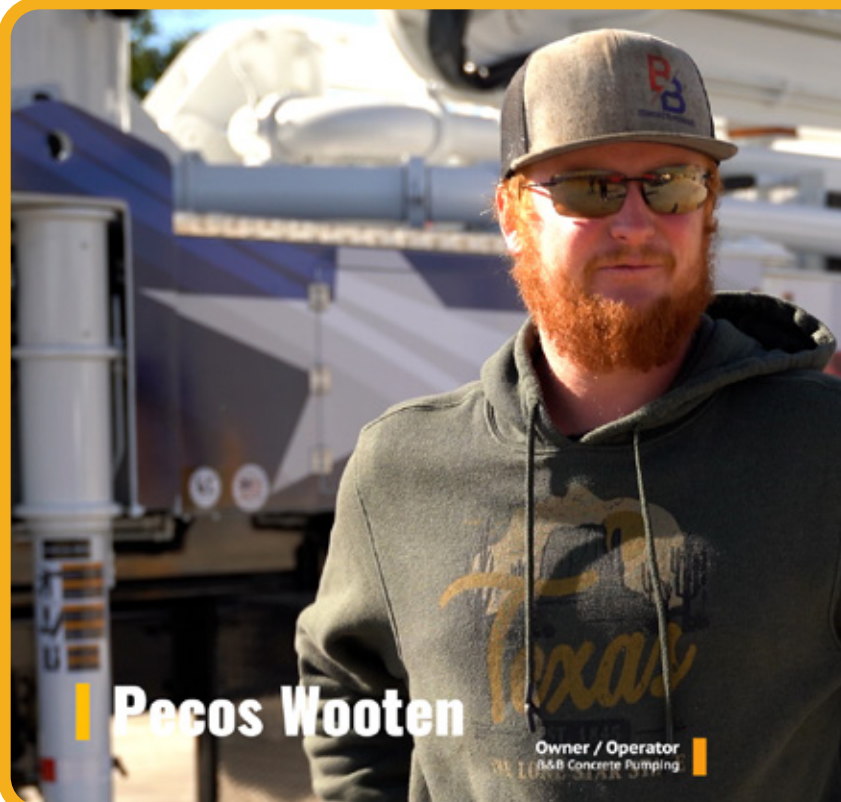
# TESTIMONIALS



"We've been in business for about 25 years. This is an awesome company. DY has made me an awesome truck, this thing is beautiful! I can't wait to put some mud in it!"

**Donnie Teachman**

Owner / Operator  
Jaguar Concrete Pumping



**Pecos Wooten**

Owner / Operator  
B&B Concrete Pumping

"Our first DY was a 37 meter roll and fold, and our second one we're stepping up to a 40 meter Z. We appreciate the business, you can't complain with these guys!"



"We bought our first DY and it's been nothing but amazing. They've made it simple enough where anyone can operate it. It's smooth, and operating is a blast. Everybody should give it a try!"



**Nick Germany**

Operations / Safety Manager  
Tri-Way Concrete Pumping

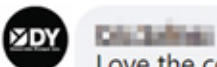
## What are people saying online?



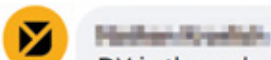
My new 48m rz 5 is finally done and out pumping! Love the versatility and the killer wrap job that DY did. I went in with an idea to make a Service member/ kittyhawk tribute pump together. And with just a few pictures sent and a handful of communications and changes, they knocked it out of the park....now



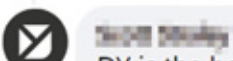
This new DY has about the smoothest pump kit I've ever used



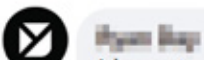
Love the continuous swing feature, even though I hardly ever fold up in the opposite way I boomed out lol



DY is the only thing I've ran besides a Schwing, I think I definitely like the DY more



DY is the best great service



I have to say this is the best looking pump out there! Not like I'm bias or anything







**BUILT TO  
PERFORM**

# REGIONAL SALES



**Michael "Doc" Dockery**

Western USA

Direct: 206-637-2218

Toll Free: 1-844-397-8677

[michael.dockery@dyconcretepumps.com](mailto:michael.dockery@dyconcretepumps.com)



**Jeromy Peterson**

Mid-West USA

Direct: 913-205-8695

Toll Free: 1-844-397-8677

[jeromy.peterson@dyconcretepumps.com](mailto:jeromy.peterson@dyconcretepumps.com)



**Wade Jimerson**

Texas

Direct: 830-388-8237

Toll Free: 1-844-397-8677

[wade.jimerson@dyconcretepumps.com](mailto:wade.jimerson@dyconcretepumps.com)



**Bill Dlhosh**

South East USA

Direct: 678-273-7707

Toll Free: 1-844-397-8677

[bill.dlhosh@dyconcretepumps.com](mailto:bill.dlhosh@dyconcretepumps.com)



**Jaison McDonald**

Canada

Direct: 360-966-1718

Toll Free: 1-844-397-8677

[jaison.mcdonald@dyconcretepumps.com](mailto:jaison.mcdonald@dyconcretepumps.com)



**Larry Keim**

Ohio / North East USA

Direct: 330-231-6025

Toll Free: 1-844-397-8677

[larry@keimconcretepumping.com](mailto:larry@keimconcretepumping.com)



# SUPPORT & PRODUCTION MANAGEMENT



**Joe Delehay**

President

Toll Free: 1-844-397-8677

Joe@dyconcretepumps.com



**Jason Delehay**

General Manager

Direct: 682-350-9949

Toll Free: 1-844-397-8677

Jason@dyconcretepumps.com



**Tina Mooney**

Business Director

Toll Free: 1-844-397-8677



**Wayne Allen**

Vice President of Sales

Direct: 713-281-0209

Toll Free: 1-844-397-8677

Wayne@dyconcretepumps.com



**Mike Morris**

North American Sales

Direct: 214-960-9124

Toll Free: 1-844-397-8677

Mike.Morris@dyconcretepumps.com



**Darcy Feihle**

Product & Tech. Support Director

Direct: 682-999-9859

Toll Free: 1-844-397-8677

Darcy@dyconcretepumps.com



**Chris Smith**

Customer Support & Service Director

Direct: 682-351-0494

Toll Free: 1-844-397-8677

SmithC@dyconcretepumps.com



**Joey Browning**

North American Parts Director

Toll Free: 1-844-397-8677

JoeyB@dyconcretepumps.com



**Brian Dominguez**

USA Parts Technician

Toll Free: 1-844-397-8677



**Dusty Barrett**

Service Manager

Toll Free: 1-844-397-8677

DYParts@dyconcretepumps.com



**Casey Ray**

Service Admin

Toll Free: 1-844-397-8677



**Jack Keeker**

Service Technician & Outside Service

Direct: 682-800-7123

Toll Free: 1-844-397-8677

Jack.Keeker@dyconcretepumps.com



**Cody Swindell**

Production Manager

Toll Free: 1-844-397-8677



**Jayson Wallace**

Assistant Production Manager

Toll Free: 1-844-397-8677



**Jose Garcia**

Paint Department Manager

Toll Free: 1-844-397-8677



**Tanner Mullins**

Production Procurement Technician

Toll Free: 1-844-397-8677



# LOCATIONS & DEALERS



## **Dallas-Fort Worth, Texas Headquarters**

11917 East FM 917  
Alvarado, Texas, USA  
76009

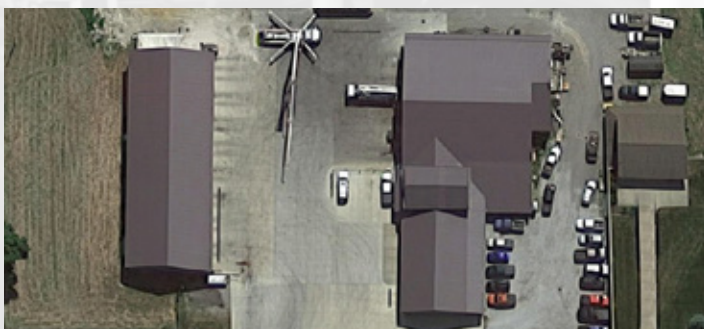
Parts, Service, Production, Engineering, and  
Administration



## **Canada Branch**

10720-48St. SE  
Calgary, AB, Canada  
T2C 3E1

Parts and Service



## **North Eastern Dealer Keim Concrete Pumping, Inc.**

1610 Co Rd 200  
Dundee, Ohio, USA  
44624

Sales, Parts, and Service

got trucks?



We have popular truck makes  
available in stock for all boom sizes!



Truck Mounted Concrete Boom Pump

# 43X-5RZ

**BUILT TO  
PERFORM**



**THIS AXLE CONFIGURATION IS ENGINEERED SPECIFICALLY FOR NORTH DAKOTA**

Truck Mounted Concrete Boom Pump

# 48X-5RZ

**BUILT TO  
PERFORM**

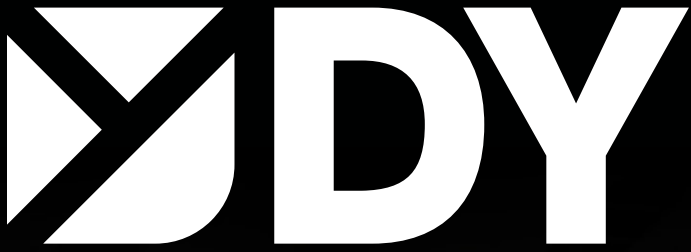




**Concrete Pumps Inc.**







**Concrete Pumps Inc.**

**BUILT TO  
PERFORM**

**1-844-397-8677**

**[www.DYConcretePumps.com](http://www.DYConcretePumps.com)**



**DYConcretePumps**

**Dallas-Forth Worth, Texas Headquarters**

11917 East FM 917  
Alvarado, Texas, USA  
76009