



Concrete Pumps Inc.



1-844-397-8677

www.DYConcretePumps.com



DYConcretePumps

**BUILT TO
PERFORM**

***2023 CANADA
PARTS CATALOG***



TABLE OF CONTENTS

About Us	3
DY Boom Pump Parts	7
Puzmeister Pump Parts	21
Schwing Pump Parts	33
Hydraulic Filters for All Pumps	37
Concrete Hoses	39
System Parts	41
Pump Accessories	49
Remotes	53
Trowel Pans & Blades	56
24/7 Support Contact Information	59
Customer Support & Service Teams	60
Locations	63

WHY DY?

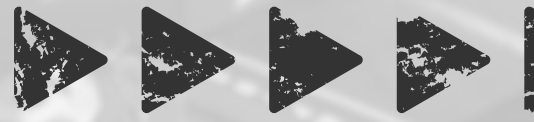
WHY CHOOSE DY?

It's All About the People!

DY Concrete Pumps is the right choice, because we have the right people.

In the middle of the day, or in the middle of the night, DY is available to help.

ABOUT DY



DY Concrete Pumps was established in 1992 and has become a global leader in the concrete pump industry since then. Over the past 30 years, DY Korea has gained the reputation of manufacturing high-quality, dependable concrete pumps for countries around the globe. DY Concrete Pumps North America was born to provide these proven pumps to the North American market at a competitive price and with superior support from our US headquarters and Canadian branch.



DY Concrete Pumps' three locations are conveniently placed to provide quick service to our North American customers no matter the location. Our main office is in Dallas/Fort Worth, Texas with locations in Ohio, and Calgary, Alberta, Canada. Our Dallas-Fort Worth headquarters is equipped with a parts, service, and sales facility that is ready to meet your needs regardless of where you are on the continent.



**QUALITY
EQUIPMENT**



**EXPERT
TEAM**



**IMPECCABLE
SUPPORT**

Concrete Pumps



With four decades of business experience, DY is a time-tested concrete pump company that understands the individual needs of owners and operators. We understand the importance of using the highest-quality materials to ensure our pumps exceed our customers' performance and durability standards. All our products are made with superior-grade steel and utilize advanced robot welding techniques to guarantee unparalleled quality.

Every DY Concrete Boom Pump features DY's patented hydraulic cylinders for smooth, efficient operation. DY Korea's automotive, hydraulic, and industrial machine departments also supply notable manufacturers such as John Deere, Caterpillar, Ford, and General Motors.

Services



Service Center

Parts

24/7 Support



DY Concrete Pumps is proud to offer our customers industry-leading service and support. Our customer support network offers tested, real-world experience to help solve any issue at any time of the day or anywhere you are. For problems that require more than a phone call, our parts department guarantees overnight parts shipping to North American customers. DY's Texas Headquarters are also home to one of America's few dedicated concrete pump service centers, state-of-the-art paint facilities, and mobile mechanics on standby. We take service and support seriously so we can keep our customers pumping!

THE DY DIFFERENCE

DY Concrete Pumps provides superior engineering

with high-quality craftsmanship and design. Our pumps are assembled and tested at our North American centers to ensure each machine meets your high-performance standards.

DY Concrete Pumps are Built to Perform.

DY designs with the owner and operator in mind because our team has end-user experience. We build our pumps to be as operator friendly as possible with simple, reliable controls and no complicated computer systems.

Most importantly, when purchasing a DY you gain access to unprecedented customer service. Our support network is a team of knowledgeable professionals who build the pumps, service them, or operate them daily. With 400 years of experience across all aspects of the industry, DY's support network is available 24/7 to solve any problem in the field or over the phone.

That's the DY Difference.



AUGER MOTOR



PART NUMBER	DESCRIPTION	PRICE
S207365A	Hydraulic Motor, Auger, OMH500	\$615.00
S207985A	Seal Set, Auger Motor	\$60.00

AUGER BEARING FLANGE



PART NUMBER	DESCRIPTION	PRICE
S204461A	Auger Bearing Flange Assembly, 60mm	\$125.00
S315490B	Auger Bearing Flange, 60mm	\$70.00
S315491A	Bushing, Auger Bearing Flange, Composite, 60mm	\$15.00
S315492A	Lip Seal, Auger Bearing Flange, 60mm	\$12.00
S315493A	Seal Cone, Auger Bearing Flange, 60mm	\$7.50
S315485A	Arm, Torque Support	\$95.00

Contact Parts Department for 50mm Auger Parts

MIXER SHAFT



PART NUMBER	DESCRIPTION	PRICE
S204459A	Auger Shaft, Short, 60mm	\$140.00
S204460A	Auger Shaft, Center, 60mm	\$245.00
S315479A	Spacer Disc, Auger Shafts	\$10.00

AUGER PADDLES



PART NUMBER	DESCRIPTION	PRICE
S204194A	Auger Paddle, Left	\$180.00
S204195A	Auger Paddle, Right	\$180.00
APBOLTKIT	Bolt Kit, Auger Paddles	\$50.00

Most DY components are interchangeable with other popular pump manufacturers.
Check with our knowledgeable Parts Team if you would like to know more.

STANDARD S-TUBE & WEAR PLATE

PART NUMBER	DESCRIPTION	PRICE
S203331A	S-Tube Standard, 80mm spline	\$1,750.00
S203331A-H	S-Tube, Standard, 80mm Spline, Hard Surfaced	\$2,000.00
S310920A	Wear Plate, Small Mouth, Carbide	\$1,995.00
S314745A	Cutting Ring Small Mouth Carbide	\$795.00
240111005	Wear Plate Small Mouth Non Carbide	\$500.00
251026008	Cutting Ring Small Mouth Non Carbide	\$175.00
S314568A	Thrust Ring Small Mouth	\$45.00
S315473A	Hex Nut S-Tube, M42x3.0	\$25.00



BIG MOUTH S-TUBE & WEAR PLATE

PART NUMBER	DESCRIPTION	PRICE
S210768A	S-Tube Big Mouth, 90mm spline	\$1,975.00
S210768A-H	S-Tube Big Mouth, 90mm Spline, Hard Surfaced	\$2,450.00
S352522A	Wear Plate Big Mouth Carbide	\$2,495.00
S359394A	Cutting Ring Big Mouth Carbide	\$995.00
261122002	Wear Plate, Big Mouth, Non Carbide	\$795.00
261123001	Cutting Ring, Big Mouth, Non Carbide	\$290.00
S352533A	Thrust Ring Big Mouth	\$60.00
S315473A	Hex Nut S-Tube, M42x3.0	\$25.00



80MM FRONT HOUSING



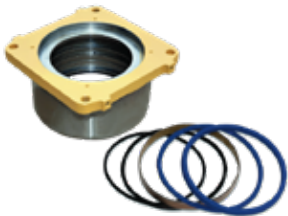
PART NUMBER	DESCRIPTION	PRICE
S204436A	Bearing Flange Front Complete, 80mm	\$495.00
S204463A	Bearing Flange Front, 80mm	\$195.00
S315515A	Wear Sleeve Front, 80mm	\$225.00
S315514A	Thrust Washer, 80mm	\$38.00
S315508A	Bushing, Front Flange, 80mm	\$50.00
S217098A	Seal Kit Front Bearing Flange, 80mm	\$45.00

90MM FRONT HOUSING



PART NUMBER	DESCRIPTION	PRICE
S216827A	Bearing Flange Front Complete, 90mm	\$595.00
S358332A	Bearing Flange Front, 90mm	\$225.00
S358333A	Wear Sleeve Front, 90mm	\$250.00
S358334A	Thrust Washer, 90mm	\$38.00
S358335A	Bushing, Front Flange, 90mm	\$50.00
S216828A	Seal Kit Front Bearing Flange, 90mm	\$45.00

REAR HOUSING



PART NUMBER	DESCRIPTION	PRICE
S315520B	Housing Rear Discharge	\$575.00
S212197A	Seal Kit Rear Discharge Housing	\$125.00
S321181A	Seal Ring For Flap Elbow	\$25.00
S310933A	S-Tube Chrome Sleeve	\$275.00

Most DY components are interchangeable with other popular pump manufacturers.
Check with our knowledgeable Parts Team if you would like to know more.

IF YOU CAN DREAM IT WE CAN MAKE IT!

We offer full customization
of the entire pump!

Contact us today to get started
on your dream machine.

DY
Concrete Pumps Inc.
www.dyconcretepumps.com
682-273-0555

ZACHINATOR



Pantone 311C
"Jaguar Blue"



JAGUAR
CONCRETE PUMPING & SERVICES, LLC

904-219-8779

1-844-397-8677
www.DYConcretePumps.com

f o in ▶
DYConcretePumps

SWING LEVER & PLUNGER CYLINDERS



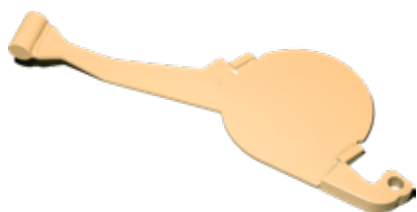
PART NUMBER	DESCRIPTION	PRICE
S310935A	Swing Lever, 80mm	\$695.00
S358331A	Swing Lever, 90mm	\$695.00
S314576A	Spacer, Ball Sockets, 4mm Thick	\$7.50
S315476A	Ball Socket, 80/90 Swing Lever	\$28.00
S204081A	Plunger Cylinder, 60mm	\$675.00
S204082A	Seal Kit, Plunger Cylinder, 60mm	\$95.00
S204437A	Bracket, Swing Lever	\$125.00
S314577A	Securing Plate, Plunger Cylinder	\$75.00

FLAP ELBOW & ACCESSORIES



PART NUMBER	DESCRIPTION	PRICE
S319189A	Flap Elbow, Standard	\$1,250.00
S205352A	Flap Elbow, w/ Prime Port	\$1,350.00
S217460A	Flap Elbow w/ Priming Port, Hard Faced	\$1,950.00
S321182A	Pin, Flap Elbow	\$70.00
S204633A	Cap, Prime Port	\$120.00
S316299A	O-Ring, 5" ZX, Prime Port	\$5.00
S322754A	Clamp, 5" ZX, Prime Port	\$110.00
S315900A	O-Ring, 6" ZX, Flap Elbow/Reducer	\$5.00
S321183A	Tie Rod Bolt	\$45.00
S321184A	Wedge Mounting Bolt	\$78.00
S321185A	Wedge, Flap Elbow	\$54.00

BOTTOM HOPPER DOOR



PART NUMBER	DESCRIPTION	PRICE
S359545A	Bottom/Clean Out Hopper Door	\$295.00
S359544A	O-Ring, Hopper Door	\$20.00
S315444A	Dual Thread Bolt, Hopper Door	\$50.00
S315448A	Bushing, Dual Thread Bolt	\$10.00
S315445A	Wedge, Hopper Door, Right	\$58.00
S315446A	Wedge, Hopper Door, Left	\$58.00

CONNECTING RINGS

PART NUMBER	DESCRIPTION	PRICE
S329180A	Connecting Ring, Standard	\$495.00
S204188A	O-Ring Kit, Connecting Ring, Small Mouth	\$35.00
S352524A	Connecting Ring, Big Mouth	\$515.00
S216829A	O-Ring Kit, Connecting Ring, Big Mouth	\$35.00



PISTON CUPS

PART NUMBER	DESCRIPTION	PRICE
S322513A	Piston Ram, One Piece, 8" (200mm)	\$275.00
S322513A-2A	Piston Guide Ring, Two Piece, 8" (200mm)	\$55.00
S322513A-2B	Piston Seal, Two Piece, 8" (200mm)	\$145.00
S322513A-2C	Complete Piston Assembly, Two Piece, 8" (200mm)	\$535.00
S310948A	Piston Ram, One Piece, 9" (230mm)	\$275.00
S366024A	Piston Guide Ring, Two Piece, 9" (230mm)	\$55.00
S366025A	Piston Seal, Two Piece, 9" (230mm)	\$160.00
S219474A	Complete Piston Assembly, Two Piece, 9" (230mm)	\$535.00



Most DY components are interchangeable with other popular pump manufacturers
Check with our knowledgeable Parts Team if you would like to know more.

MATERIAL & PUMPING CYLINDERS



PART NUMBER	DESCRIPTION	PRICE
S204079B	Main Pumping Cylinder, DN140 x 2100	\$4,750.00
S312792A	Material Cylinder, 230mm x 2100mm	\$2,950.00
S206681A	Main Pumping Cylinder, DN140 x 2400	\$5,495.00
S314715A	Delivery Cylinder 230mm x 2558mm	\$3,500.00
S204080A	Seal Kit, Main Pump Cylinder, Complete (1 Cylinder)	\$495.00
S217880A	Seal Kit, Main Pump Cylinder, Front Side (2 Cylinders)	\$295.00
S322080A	Stud Bolt, M30-P2.0 x 2360mm	\$295.00
S322081A	Stud Bolt, M30-P2.0 x 615mm	\$135.00
S322082A	Stud Bolt, M30-P2.0 x 1250mm	\$180.00
S315728A	Stud Bolt, M30-P2.0 x 2855mm	\$350.00
S315729A	Stud Bolt, M30-P2.0 x 930mm	\$175.00
S315730A	Stud Bolt, M30-P2.0 x 1420mm	\$200.00
S315731A	Hex Tensioner Nut, M30	\$75.00
S311127C	Proximity Sensor	\$265.00

HYDRAULIC PUMPS



PART NUMBER	DESCRIPTION	PRICE
S310890A	A4VG125HD Main Pump (FT), 33m-48m	\$8,950.00
S310891A	A4VG125HD Main Pump (RR), 33m-48m	\$8,950.00
S314706A	A4VG180HD Main Pump (FT), 52m-57m	\$13,950.00
S314705A	A4VG180HD Main Pump (RR), 52m-57m	\$13,950.00
S361683A	Regulator, Main Pump, A4VG125	\$2,250.00
S361684A	Regulator, Main Pump, A4VG180	\$2,750.00
S310892A	A10VO28DR Accumulator Pump, 33m-48m	\$2,275.00
S207091A	A10VO28DR-24CC Accumulator Pump, 52m-57m	\$2,275.00
S310893A	Boom Pump, 33m-38m	\$3,750.00
S207949A	Boom Pump, 40m-48m	\$3,995.00
S314710A	Boom Pump, 52m-57m	\$4,450.00
S314716A	Double Gear Pump (Bosch)	\$1,150.00

Most DY components are interchangeable with other popular pump manufacturers.
Check with our knowledgeable Parts Team if you would like to know more.

ACCUMULATOR BOTTLE

PART NUMBER	DESCRIPTION	PRICE
S314718A	Accumulator Bottle DY, 4L	\$795.00
S360340A	Accumulator Bladder DY, 4L	\$395.00
S360196A	Accumulator Bottle, DY, 6L	\$995.00
S365358A	Accumulator Bladder, DY, 6L	\$495.00
S355602A	Accumulator Charging Kit, DY	\$795.00



WATER BOX

PART NUMBER	DESCRIPTION	PRICE
S204566A	Water Box Drain Handle w/Stopper	\$85.00
S315745A	Stopper for Drain Handle	\$16.00
S315555B	Spacer Flange (Dogbone)	\$295.00
S315556A	Rod Flange	\$155.00
S355357A	Oil Lubrication Block	\$450.00
S204567A	Lid, Water Box	\$195.00



WATER TANK

PART NUMBER	DESCRIPTION	PRICE
S216110A	Water Tank, Composite, 500L	\$3,500.00
S212160B	Water Tank, Composite, 800L	\$4,500.00
S211037A	Cap, Water Tank	\$60.00
S315388A	Flushing Water Pump	\$1,850.00
S207366A	Motor, Water Pump	\$750.00
S217753A	Seal Kit, Water Pump Motor	\$195.00
S302946A	Roller Water Pump	\$475.00
S316182A	Wash Out Hose w/ Camlocks, 25'	\$199.00
N539-075	Wash Out Nozzle	\$20.00



Most DY components are interchangeable with other popular pump manufacturers
Check with our knowledgeable Parts Team if you would like to know more.

HOPPER COVERS & GRATES



PART NUMBER	DESCRIPTION	PRICE
S211468B	Hopper Cover Assembly, Composite	\$1,895.00
S210404A	Hopper Cover Assembly, Aluminum	\$2,500.00
S314586A	Rubber Guide Collar, Hopper	\$295.00
S354128A	Rubber Cover, Hopper Lid Hinges	\$150.00
S354129A	Hinge, Hopper Cover	\$35.00
S354130A	Handle, Hopper Cover	\$35.00
S203337A	Hopper Grate	\$495.00
S315477A	Rubber Buffer Hinge, Hopper Grate	\$35.00
S314584A	Vibration Dampener, Hopper Grate	\$12.00
461952	Rubber Seal, Hopper Grate	\$17.50

PTO BOXES & ACCESSORIES



PART NUMBER	DESCRIPTION	PRICE
S204464C	PTO Gear Box, G61R, 1:1.49 GR	\$8,750.00
S217778A	PTO Gear Box, G64, 1:1.47 GR, 33m-48m	\$8,995.00
S204418A	PTO Gear Box, G64, 1:1.25 GR, 52m-57m	\$8,995.00
S314647A	Solenoid Assembly, PTO Air Shift (Old)	\$145.00
S358434A	Solenoid Assembly, PTO Air Shift (New)	\$145.00
S217908A	Piston, Switching Cylinder, PTO	\$75.00
S358435A	Air Regulaor, PTO Shift Solenoid	\$195.00
S218876A	Shift Fork Assembly, G61	\$250.00
S218877A	Shift Fork Assembly, G64	\$250.00



Most DY components are interchangeable with other popular pump manufacturers.
Check with our knowledgeable Parts Team if you would like to know more.

TURNING ASSEMBLY

PART NUMBER	DESCRIPTION	PRICE
S322198A	Reduction Gear Assembly, 33m	\$4,495.00
S320304A	Reduction Gear Assembly, 38m-42m	\$4,995.00
S327643A	Reduction Gear Assembly, 57m	\$5,750.00
S320405A	Motor, Reduction Gear Assembly, 33m-52m	\$615.00
S313744A	Motor, Reduction Gear Assembly, 57m	\$650.00
S313633B	Piston Rack, Slewing Assembly, 37m	\$1,595.00
S203043A	Piston Rack Housing, Slewing Assembly, 37m	\$1,295.00
S313633B-SK	Seal Kit, Piston Rack, 37m	\$125.00
S203044A	Bearing Assembly, Throat, 37m	\$1,395.00
S203045A	Bearing Assembly, Foot, 37m	\$1,295.00
S314232A	Overcenter Valve, 33m, 38m-57m	\$725.00
S313806A	Overcenter Valve, 37m	\$1,275.00

OUTRIGGER

PART NUMBER	DESCRIPTION	PRICE
S322196B	Outrigger Chain, RS60, 277 Links	\$180.00
S322196A	Outrigger Chain, RS60, 281 Links	\$185.00
S358748A	Outrigger Chain, RS60, 298 Links	\$190.00
S353864A	Outrigger Chain, RS60, 303 Links	\$195.00
S320663A	Energy Guide Chain, 45 Links	\$185.00
S329189A	Energy Guide Chain, 48 Links	\$195.00
S320664B	Energy Guide Chain, 49 Links	\$205.00
S329072A	Energy Guide Chain, 51 Links	\$210.00
S361598A	Energy Guide Chain, 54 Links	\$215.00
S313743A	Tensioner Bolt, Outrigger Chain	\$22.00
S322129A	Dual Pilot Check Valve, Outrigger Jack Cylinder	\$215.00
S313744A	Hydraulic Motor, Outrigger Extension	\$650.00
S204279D	Locking Assembly, Rear Outrigger	\$465.00
S209217A	Outrigger Foot, Jacking Cylinder, 33m-42m	\$495.00
S209218A	Outrigger Foot, Jacking Cylinder, 43m-57m	\$545.00
S324910A	Retaining Plate Set, Outrigger Foot, 33m-42m	\$85.00
S324912A	Retaining Plate Set, Outrigger Foot, 43m-57m	\$99.00
S315114A	Rubber Stopper, Rear Outrigger	\$60.00



MANIFOLD BLOCK

PART NUMBER	DESCRIPTION	PRICE
S218635B	FFH Block, Complete Manifold Assembly	\$7,995.00
S327272A	Directional Control Valve, FFH Block	\$675.00
S327273A	Valve Assembly, Reversing/Push Over Head	\$395.00
S327274A	Valve Assembly, Stroke Change	\$595.00
S327276A	Valve, Proportional Relief, Rexroth	\$595.00
S365270A	Valve, Proportional Relief, Hydra Force	\$695.00
S362193A	Valve, Relief, Manifold Block, 250 Bar	\$135.00
S362194A	Valve, Power Block, 52m-57m	\$275.00
S327801A	Valve, Shut Off	\$165.00
S355598A	Valve Assembly, Accumulator Dump	\$395.00
S218349A	CPR Block Assembly, w/ Throttle	\$775.00
S218350A	Valve, Pressure Release, CPR Block	\$135.00
S218351A	Valve, Manual Pressure Control	\$395.00
S362185A	Valve, Sequencing , CPR Block	\$175.00
S366818A	Coil, 24V, Reversing/Push Over/Stroke Change Valves	\$135.00

SAFETY SWITCHES



PART NUMBER	DESCRIPTION	PRICE
S202476B	E-Stop Box Assembly	\$195.00
S316392A	E-Stop Switch, w/ Plate & Contact Block	\$60.00
ZB2-BE101	Contact Block, E-Stop	\$15.00
S327647A	Rear Horn Box w/Button	\$95.00
S319168A	Limit Switch, Hopper Grate (Old Style-Plastic)	\$95.00
S319168B	Limit Switch, Hopper Grate (Old Style-Metal)	\$135.00
S311123B	Limit Switch, Hopper Grate (New Style)	\$125.00
S311124A	Limit Switch, Boom Position	\$199.00
S311124A-ROD	Rod, Limit Switch, Boom Position	\$19.00

Most DY components are interchangeable with other popular pump manufacturers.
Check with our knowledgeable Parts Team if you would like to know more.

CAPS & GAUGES

PART NUMBER	DESCRIPTION	PRICE
S315704A	Pressure Gauge w/ Flange, 400 Bar	\$65.00
S316401A	Hour Meter Gauge	\$135.00
S316402B	Temperature Gauge, Control Cabinet	\$395.00
S326367A	Vacuum Gauge w/Flange, -0.1 MPa	\$65.00
S318172A	Hydraulic Cap, w/ Dipstick	\$35.00
S318154A	Fuel Cap, Locking, w/ Keys	\$99.00
S319161A	Sight Gauge Level, Outrigger	\$65.00
S313656A	Sight Gauge Level, Hydraulic Tank, L300	\$70.00



Most DY components are interchangeable with other popular pump manufacturers
Check with our knowledgeable Parts Team if you would like to know more.





PUTZMEISTER AFTERMARKET PARTS

MOTOR FOR AGITATOR



PART NUMBER	DESCRIPTION	PRICE
238130001	Hydraulic Motor, Auger, OMH500	\$615.00
541970	Hydraulic Motor, Auger, BRH L750, Ergonic Hopper	\$900.00
239696007	Seal Set, Auger Motor, OMH500	\$45.00
502156	Seal Set, Auger Motors, BRH L750	\$75.00

AUGER BEARING FLANGE



PART NUMBER	DESCRIPTION	PRICE
242572008	Bearing Flange Assembly, 60mm	\$82.50
220229001	Bearing Flange Assembly, Closed, 60mm	\$150.00
242573007	Bearing Flange Only, 60mm	\$70.00
202357001	Bearing Flange Only, 50mm	\$65.00
484731	Bearing Flange Only, Ergonic Style	\$95.00
222484006	Bushing Metal 60mm	\$14.00
235087008	Bushing, Plastic, 50mm	\$12.50
202791007	Bushing, Plastic, 40mm	\$12.50
043909003	O- Ring, Auger Flange, 60mm	\$2.50
065345001	Lip Seal, Bearing Flange, 60mm	\$6.50
242574006	Seal Cone, 60mm	\$5.50
084013000	Seal Cone, 50mm	\$6.50
003507005	Seal Cone, 40mm	\$6.50

MIXER SHAFT



PART NUMBER	DESCRIPTION	PRICE
275587002	Auger Shaft, 60mm	\$125.00
278096009	Auger Shaft, 60mm, 250mm Length	\$115.00
238340008	Auger Shaft, 50mm, 285mm Length	\$110.00
539806	Auger Shaft, 40mm, 255mm Length	\$105.00
264020004	Auger Shaft, Center, 50/60mm	\$225.00
055916000	Spacer, Auger Shafts	\$7.50

Most DY components are interchangeable with other popular pump manufacturers.
Check with our knowledgeable Parts Team if you would like to know more.

AUGER PADDLES

PART NUMBER	DESCRIPTION	PRICE
441540	Auger Paddle, Left	\$145.00
441541	Auger Paddle, Right	\$145.00
406795	Auger Paddle, Left, Hard Surfaced	\$230.00
406796	Auger Paddle, Right, Hard Surfaced	\$230.00
APBOLTKIT	Bolt Kit, Auger Paddles	\$45.00



STANDARD S-TUBE & WEAR PLATE

PART NUMBER	DESCRIPTION	PRICE
S203331A	S-Tube, Small Mouth, 80mm spline (406926)	\$1,750.00
S203331A-H	S-Tube, Small Mouth, 80mm Spline, Hard Surfaced	\$2,000.00
252898002	Thrust Ring, Small Mouth	\$35.00
251026008	Cutting Ring, Small Mouth, Non-Carbide	\$175.00
S314745A	Cutting Ring, Small Mouth, Carbide	\$795.00
240111005	Wear Plate, Small Mouth, Non-Carbide	\$500.00
S310920A	Wear Plate, Small Mouth, Carbide	\$1,995.00
033718000	Hex Nut S-Tube, M42x3.0	\$20.00



BIG MOUTH S-TUBE & WEAR PLATE

PART NUMBER	DESCRIPTION	PRICE
S210768A	S-Tube, Big Mouth, 90mm Spline (434023)	\$1,975.00
S210768A-H	S-Tube, Big Mouth, 90mm Spline, Hard Surfaced	\$2,450.00
458878	Thrust Ring, Big Mouth	\$45.00
261123001	Cutting Ring, Big Mouth, Non-Carbide	\$290.00
S359394A	Cutting Ring, Big Mouth, Carbide	\$995.00
261122002	Wear Plate, Big Mouth, Non-Carbide	\$795.00
S352522A	Wear Plate, Big Mouth, Carbide	\$2,495.00
519314	Wear Plate, Big Mouth, Non Carbide, Ergonic	\$875.00
S352522A-1	Wear Plate, Big Mouth, Carbide, Ergonic	\$2,495.00
033718000	Hex Nut S-Tube, M42x3.0	\$20.00



Most DY components are interchangeable with other popular pump manufacturers
Check with our knowledgeable Parts Team if you would like to know more.

80MM FRONT HOUSING



PART NUMBER	DESCRIPTION	PRICE
401783	Bearing Flange Assembly, Front, 80mm	\$475.00
027783009	Bearing Flange, Front Housing, 80mm	\$155.00
400494	Wear Sleeve Front, 80mm (No Splines)	\$250.00
066586005	Thrust Washer, Front Housing, 80mm	\$35.00
028550008	Bushing, Font Housing, 80mm	\$45.00
401783SK	Seal Kit, 80mm Front Housing Assembly	\$45.00

90MM FRONT HOUSING



PART NUMBER	DESCRIPTION	PRICE
274893001	Bearing Flange Assembly, Front, 90mm	\$575.00
519127	Bearing Flange Assembly, Front, 90mm, Ergo	\$595.00
274889002	Bearing Flange, Front Housing, 90mm	\$195.00
274884007	Wear Sleeve, Front Housing, 90mm	\$285.00
427720	Thrust Washer, Front Housing, 90mm	\$35.00
455706	Bushing, Front Housing, 90mm	\$55.00
519127SK	Seal Kit, Upper Housing, 90mm, Ergo	\$45.00
274893001SK	Seal Kit, Upper Housing, 90mm	\$45.00

REAR HOUSING



PART NUMBER	DESCRIPTION	PRICE
240390004	Discharge Housing, Rear, w/ Seal Kit	\$525.00
240391003SK	Seal Kit, Rear Discharge Housing	\$95.00
508068	Discharge Housing, Rear, Ergo	\$550.00
508068SK	Seal Kit, Rear Discharge Housing, Ergo	\$125.00
240421009	Seal Ring, Flap Elbow	\$25.00
S352531A	Chrome Sleeve, S-Tube (228383004)	\$275.00

Most DY components are interchangeable with other popular pump manufacturers.
Check with our knowledgeable Parts Team if you would like to know more.

SWING LEVER & PLUNGER CYLINDERS

PART NUMBER	DESCRIPTION	PRICE
400493	Swing Lever, 80mm, w/ Groove	\$395.00
458733	Swing Lever, 80mm w/o Groove	\$395.00
274877001	Swing Lever, 90mm, w/ Groove	\$425.00
458703	Swing Lever, 90mm, w/o Groove	\$425.00
257429007	Spacer For Ball Socket, 4mm	\$7.50
257428008	Spacer For Ball Socket, 13mm	\$12.00
256300004	Ball Socket for 80/90mm Swing Lever	\$28.00
440405	Plunger Cylinder 60mm	\$495.00
262840008SK	Seal Kit Plunger Cylinder 60mm	\$55.00



FLAP ELBOW AND ACCESSORIES

PART NUMBER	DESCRIPTION	PRICE
279856001	Flap Elbow, w/o Prime Port	\$995.00
417730	Flap Elbow, w/ Prime Port	\$1,150.00
417730-H	Flap Elbow, w/ Prime Port, Hard Surfaced	\$1,750.00
STC2EC	Blowout Cover, Flap Elbow, w/ Prime Port	\$575.00
S315900A	O-Ring, 6" ZX, Flap Elbow/Reducer (096042009)	\$5.00
240421009	Seal Ring, Flap Elbow	\$25.00
426793	Wedge, Flap Elbow	\$45.00
522382	Wedge, Flap Elbow, Curved	\$55.00
262639002	Mounting Bolt, Wedge	\$60.00
264392004	Tie Rod Bolt	\$40.00
279626008	Pin, Flap Elbow	\$49.00
041764004	Shim, Flap Elbow Pin	\$6.50
054720006	Cap, Prime Port	\$75.00
S316299A	O-Ring, 5" ZX, Prime Port (043017005)	\$5.00
051342005	Clamp, 5" ZX, Prime Port	\$110.00



Most DY components are interchangeable with other popular pump manufacturers
Check with our knowledgeable Parts Team if you would like to know more.

BOTTOM HOPPER DOOR



PART NUMBER	DESCRIPTION	PRICE
242334000	Clean Out Door, Hopper Bottom	\$275.00
501457	Clean Out Door, Hopper Bottom, Ergo Style	\$350.00
233915001	Bottom Door O-Ring	\$20.00
407313	Dual Thread Bolt, Clean Out Door	\$35.00
066181002	Bushing, Dual Thread Bolt, Clean Out Door	\$6.00
239789008	Door Wedge, Left, Clean Out Door	\$45.00
239790000	Door Wedge, Right, Clean Out Door	\$45.00

HOPPER GRATE PARTS

PART NUMBER	DESCRIPTION	PRICE
242456001	Hopper Grate, Steel, 905 Hopper	\$495.00
245991000	Rubber Guide Collar, Hopper	\$180.00
5315477A	Rubber Buffer Hinge, Hopper Grate (432235)	\$35.00
461952	Rubber Seal, Hopper Grate	\$17.50
534958	Transponder, Upper Magnetic Section	\$205.00
531793	Transponder, Lower Base Section, w/ Cable	\$995.00
277389004	Switch Cam, Hopper Grate	\$30.00

CONNECTING RINGS



PART NUMBER	DESCRIPTION	PRICE
252200001	Connecting Ring, Standard (Set)	\$999.00
S204188A	O-Ring Kit, Connecting Ring, Small Mouth	\$35.00
263330009	Connecting Ring, Big Mouth (Requires 2)	\$550.00
S216829A	O-Ring Kit, Connecting Ring, Big Mouth	\$35.00
041466001	O-Ring, 210mm x 8mm, NBR70	\$10.00
043635005	O-Ring, 235mm x 5mm, NBR70	\$11.00

Most DY components are interchangeable with other popular pump manufacturers.
Check with our knowledgeable Parts Team if you would like to know more.

PISTON CUPS

PART NUMBER	DESCRIPTION	PRICE
019004000	Piston Ram, One Piece, 8" (DN200)	\$245.00
080794006	Piston Guide Ring, Two Piece, 8" (DN200)	\$50.00
080372004	Piston Seal, Two Piece, 8" (DN200)	\$175.00
262893000	Piston Ram, One Piece, 9" (DN230)	\$205.00
080672005	Piston Guide Ring, Two Piece, 9" (DN230)	\$60.00
080373003	Piston Seal, Two Piece, 9" (DN230)	\$175.00
085813005	Complete Piston Assembly, 9" (DN230)	\$495.00
275059006	Piston Guide Ring, 10" (DN250)	\$75.00
274904000	Piston Seal, 10" (DN250)	\$175.00
433029	Complete Piston Assembly, 10" (DN250)	\$675.00



MATERIAL & PUMPING CYLINDERS

PART NUMBER	DESCRIPTION	PRICE
433195	Main Pumping Cylinder DN130/80 x 2100	\$3,995.00
433195SK	Seal Kit, Main Pumping Cylinder DN130/80	\$350.00
510773	Main Pumping Cylinder, DN140/80 x 2100	\$4,250.00
510773SK	Seal Kit, Main Pumping Cylinder DN140/80	\$395.00
239867001	Delivery Cylinder, 230mm x 2100mm	\$2,325.00
274883008	Delivery Cylinder, 250mm x 2100mm	\$2,995.00
231149002	Delivery Cylinder, 280mm x 2100mm	\$3,495.00
270321001	Proximity Sensor	\$275.00



HYDRAULIC PUMPS

PART NUMBER	DESCRIPTION	PRICE
273904001	A4VG125HD Main Pump (FT), w/ Feed Pump SAE-D	\$7,250.00
262146003	Drive Shaft w/ Feed Pump SAE-D	\$1,995.00
266680002	A4VG125HD Main Pump (RR), w/ Feed Pump SAE-B	\$7,750.00
262147002	Drive Shaft w/ Feed Pump SAE-B	\$1,995.00
067925005	LA2F16 Boom Pump	\$1,750.00
495750	LA2FO23/61L Boom Pump	\$2,600.00
067370003	A10VO28(13)DR Accumulator Pump	\$1,550.00
235383000	R14 CM3, Single Gear Pump	\$250.00



ACCUMULATOR BOTTLE



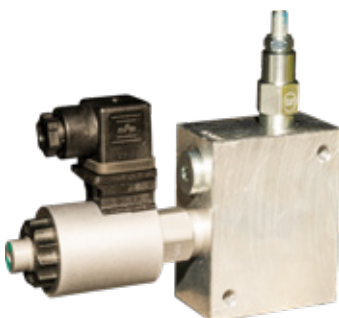
PART NUMBER	DESCRIPTION	PRICE
S355602A	Accumulator Charging Kit, DY	\$795.00
066600004	Accumulator Bottle Hydac, 4L	\$975.00
064020000	Accumulator Bladder Hydac, 4L	\$425.00
273962001	Accumulator Bottle Hydac, 6L	\$1,250.00
283868001	Accumulator Bladder Hydac, 6L	\$550.00
HYDAC-SK-S	Seal Kit, Hydac Accumulator Bladder, Small	\$20.00
HYDAC-SK-L	Seal Kit, Hydac Accumulator Bladder, Large	\$25.00
VA302-DN	Valve Core, High Pressure, Accumulator Bottle	\$7.50

WATER BOX & WATER TANK



PART NUMBER	DESCRIPTION	PRICE
S204566A	Water Box Drain Handle w/Stopper (451574 New)	\$85.00
019011006	Stopper for Drain Handle, 8mm Thread	\$12.50
255123004	Cover, Water Box	\$135.00
2555122005	Grill, Water Box	\$135.00
401503	Spacer Flange (Dogbone)	\$160.00
263558001	Rod Flange	\$145.00
404435	Flushing Water Pump	\$1,999.00
229178001	Motor, Water Pump	\$695.00
018533006	Roller Water Pump, Hypro 7560C	\$495.00
018570001	Repair Kit, Roller Water Pump	\$65.00

VALVES & SOLENOIDS



PART NUMBER	DESCRIPTION	PRICE
267378009	Solenoid Coil, 12v	\$180.00
267377000	Solenoid Coil, 24v	\$120.00
067346008	Valve Assembly, 4/3 Way, 24v	\$425.00
067344000	Valve Assembly, 4/2 Way, 24v	\$400.00
295208002	Valve Assembly, Directional Control	\$525.00
256078006	Solenoid Coil, 24v, Boom Stack Valve	\$299.00
255120007	Solenoid Coil, 12v, Boom Stack Valve	\$299.00
580765	Valve Assembly, 4/2 Way, 24v, NG10	\$525.00

PTO BOXES & ACCESSORIES

PART NUMBER	DESCRIPTION	PRICE
280914000	G61, PTO Gearbox	\$8,750.00
278023000	G64, PTO Gearbox	\$8,750.00
549875	G64SB, PTO Gearbox	\$9,950.00
439366	G64C, PTO Gearbox	\$9,500.00
222259008	Piston, Switching Cylinder, G64 PTO	\$30.00
479527	Piston, Switching Cylinder, G64C PTO	\$65.00
284918002	Switching Cylinder, PTO	\$95.00
062587008	Sliding Clutch, G61 PTO	\$295.00
284943006	Sliding Clutch, G64 PTO	\$450.00
479488	Sliding Clutch, G64C PTO	\$450.00
065644003	Switch Fork w/ Rod, G61 PTO	\$395.00
284946003	Switch Fork w/ Rod, G64 PTO	\$450.00
479492	Switch Fork w/ Rod, G64C PTO	\$450.00
285085002	Castle Nut, PTO	\$75.00
222257000	Breather Cap, G64 PTO	\$35.00
258683004	Splined Coupling, G64 to A4VG180HD	\$130.00
247929009	Splined Coupling, G64 to A2F16 Boom Pump	\$180.00



SAFETY SWITCHES & RELAYS

PART NUMBER	DESCRIPTION	PRICE
452208	Limit Switch, Hopper Grate	\$160.00
239584009	Limit Switch, PTO	\$60.00
405197	E-Stop Box Assembly	\$160.00
453092	Horn Button Assembly, w/ Wire & Loom	\$100.00
278495007	Step Relay, 24v	\$120.00
244371003	Step Relay, 24v	\$65.00
274147003	Relay, 24v	\$15.00
269463006	Relay, Change Over, 24v	\$25.00
244372002	Relay Module, Stroke Change, 24v	\$195.00
225684007	Relay, 24v	\$35.00



Most DY components are interchangeable with other popular pump manufacturers
Check with our knowledgeable Parts Team if you would like to know more.

TK PUMP PARTS

PART NUMBER	DESCRIPTION	PRICE
444384	Wear Plate, Non-Carbide, TK70	\$585.00
430406	Wear Plate, Non-Carbide, TK40-60	\$575.00
251231000	Cutting Ring, Non-Carbide, TK70	\$180.00
249304004	Thrust Ring, TK70	\$38.00
430408	Cutting Ring, Non-Carbide, TK40-60	\$170.00
430378	Thrust Ring, TK40-60	\$36.00
401783	Upper Housing Assembly, TK40-70	\$475.00
401783SK	Seal Kit, Upper Housing Assembly, TK40-70	\$45.00
410504	Rear Housing, TK40-70	\$475.00
410504SK	Seal Kit, Rear Housing, TK40-70	\$150.00
261611005	Chrome Sleeve, S-Tube, TK40-70	\$295.00
056123009	Piston Guide Ring, Two Piece, 7" (DN180), TK60-70	\$60.00
056720004	Piston Seal, Two Piece, 7" (DN180), TK60-70	\$160.00
019447007	Piston Guide Ring, Two Piece, 6" (DN150), TK40-50	\$60.00
056839005	Piston Seal, Two Piece, 6" (DN150), TK40-50	\$175.00



Most DY components are interchangeable with other popular pump manufacturers.
Check with our knowledgeable Parts Team if you would like to know more.

COME VISIT OUR BRAND NEW TEXAS HEADQUARTERS



**Featuring Texas' only
Concrete Pump Service Center
& the Largest Paint Booth in the South.**

**See the facility and meet the
team that builds your pump!**

**QUALITY YOU DESERVE,
DEPENDABILITY YOU CAN
COUNT ON.**



A construction worker wearing a safety harness and boots is standing next to a large piece of heavy machinery, possibly a generator or engine compartment. The worker is leaning against the machinery. The background shows a construction site with various equipment and structures. The text "SCHWING AFTERMARKET PARTS" is overlaid in large, bold, yellow letters.

SCHWING AFTERMARKET PARTS

AGITATOR MOTOR & BEARINGS



PART NUMBER	DESCRIPTION	PRICE
10039180	Hydraulic Motor Agitator	\$615.00
10039180K	Keyway, Agitator Motor	\$12.00
10076459	Seal Kit, Agitator Motor	\$60.00
10061072	Bearing Assembly LH (Drive)	\$295.00
10061073	Bearing Assembly RH	\$265.00
10061074	Bearing Support LH	\$95.00
10061075	Flange Shaft LH	\$90.00
10061076	Sealing Cone	\$7.50
10061077	Bushing 60/80x23	\$18.00
10061078	Bearing Support RH	\$70.00
10061079	Support Cover	\$35.00
10061080	Flanged Shaft RH	\$80.00
10061081	Disc Inner	\$30.00
10061082	Flanged Bushing	\$45.00
10061083	Disc Outer	\$25.00

AGITATOR SHAFT



PART NUMBER	DESCRIPTION	PRICE
10052446	Agitator Shaft Assembly, M Rock	\$1,095.00
10167220	Agitator Shaft Assembly, B/E Rock	\$1,095.00
10052448	Auger Paddle, Center/Ends, M Rock	\$115.00
10167218	Auger Paddle, Ends, B/E Rock	\$115.00
10167219	Auger Paddle, Center, B/E Rock	\$115.00

ROCK VALVE

PART NUMBER	DESCRIPTION	PRICE
10059467	Rock Valve, M-Style, DN210/180	\$2,150.00
10064073	Shaft, Rock Valve, M-Style	\$995.00
10181912	Rock Valve, B-Style, DN210/180	\$2,150.00
10180090	Shaft, Rock Valve, B-Style	\$1,495.00
10018037	Bushing w/ Groove, Front, Rock Valve Shaft	\$75.00
10018047	Bushing, Rear, Rock Valve Shaft	\$175.00
10018035	Sealing Cover	\$145.00

WEAR PARTS

PART NUMBER	DESCRIPTION	PRICE
10032182	Kidney Seal, DN135	\$82.50
10029138	Kidney Seal, DN180	\$82.50
10025851	Kidney Plate, DN135	\$475.00
10018046	Kidney Plate, DN180	\$395.00
10063939	Cutting Ring, Non-Carbide, DN210	\$160.00
10081098	Cutting Ring, Carbide, DN210	\$1,250.00
10158880	Back Up Ring DN210	\$55.00
10064472	Pressure Spring, DN210	\$15.00
10181916	Cutting Ring, Non-Carbide, DN220	\$240.00
10182449	Cutting Ring, Carbide, DN220	\$1,250.00
10181915	Back Up Ring, DN220	\$125.00
10181917	Pressure Spring DN220	\$25.00
10166890	Cutting Ring, Non-Carbide, DN230	\$325.00
10185103	Cutting Ring, Carbide, DN230	\$1,350.00
10166975	Pressure Spring DN230	\$25.00
10074767	Wear Plate, Non-Carbide, DN200	\$595.00
10081096	Wear Insert, Carbide, DN200	\$1,250.00
10074768	Wear Plate, Non-Carbide, DN230	\$595.00
10081097	Wear Insert, Carbide, DN230	\$1,250.00
10146062	Base Plate, Carbide, DN180/200/230	\$1,595.00
10146064	Triangle Insert, Small, Carbide	\$225.00
10146063	Triange Insert, Large, Carbide	\$495.00
10166658	Wear Plate, Non-Carbide, DN250	\$625.00
10182449	Wear Insert, Carbide, Left, DN250	\$1,250.00
10190439	Wear Insert, Carbide, Right, DN250	\$1,350.00
10183641	Triangle Insert, Small, Carbide, DN250	\$250.00
10183640	Triangle Insert, Large, Carbide, DN250	\$525.00
10074769	Mounting Plate, DN180/200/230	\$725.00
10166657	Mounting Plate, DN250	\$725.00
10018029	Cover Lining	\$250.00

Most DY components are interchangeable with other popular pump manufacturers
Check with our knowledgeable Parts Team if you would like to know more.



BOTTOM HOPPER DOOR

PART NUMBER	DESCRIPTION	PRICE
10080782	Clean Out Door, Hopper Bottom, DN250	\$225.00
10035783	Sealing Ring, DN250, Clean Out Door	\$145.00



SEALS & O-RINGS

PART NUMBER	DESCRIPTION	PRICE
10206185	Sealing Ring, DN150, Old Style	\$17.50
10004761	Sealing Ring, DN150, New Style	\$5.00
10206184	Sealing Ring, DN180	\$15.00
10006403	Sealing Ring, DN180	\$8.00
10000765	O-Ring, 60mm x 5mm	\$2.50
10017436	O-Ring, 70mm x 8mm	\$6.00
10001052	O-Ring, 94mm x 3mm	\$5.00
10016664	O-Ring, 195mm x 3mm	\$5.00
10000602	O-Ring, 200mm x 10mm	\$7.50
10016665	O-Ring, 225mm x 3mm	\$6.00

PISTON RAMS

PART NUMBER	DESCRIPTION	PRICE
10209273	Ram Connection	\$230.00
10161863	Piston Ram, 6" (DN150)	\$180.00
10161781	Piston Ram, 7" (DN180)	\$185.00
10161754	Piston Ram, 8" (DN200)	\$195.00
10161634	Piston Ram, 9" (DN230)	\$200.00
10161980	Piston Ram, 10" (DN250)	\$275.00

Most DY components are interchangeable with other popular pump manufacturers.
Check with our knowledgeable Parts Team if you would like to know more.

SHIFTING CYLINDERS

PART NUMBER	DESCRIPTION	PRICE
10017556	Piston Rod, Shift Cylinder	\$1,250.00
10064756	Seal Kit, Shift Cylinder	\$125.00
10006726	Bushing, MB3530, Shift Cylinder	\$4.50
10118218	Slewing Pivot, Long, Shift Cylinder	\$390.00

MATERIAL CYLINDERS

PART NUMBER	DESCRIPTION	PRICE
10006084	Material Cylinder, DN200 x 1600mm	\$2,100.00
10019377	Material Cylinder, DN230 x 2133mm	\$2,450.00
10178873	Material Cylinder, DN250 x 2500mm	\$2,950.00



WATER PUMP

PART NUMBER	DESCRIPTION	PRICE
018533006	Roller Water Pump, Hypro 7560C	\$495.00
10170884	Repair Kit, Roller Water Pump (018570001)	\$65.00
10011759	Connecting Insert, Water Pump	\$25.00



PTO

PART NUMBER	DESCRIPTION	PRICE
10173818	4400 PTO Gearbox, 1:1.932	\$11,950.00
10038386	4194 PTO Gearbox, 1:1.28	\$11,950.00
10012464	Shifting Fork w/ Rod	\$245.00
10004989	Sliding Clutch, 4194 PTO Gearbox	\$425.00



ACCESSORIES

PART NUMBER	DESCRIPTION	PRICE
10160911	Valve Cartridge w/ Pigtail, 24v	\$295.00
10173517	Valve Catrdige w/ Pigtail, 24v, Pulsar	\$295.00
10205385	E-Stop Button Assembly	\$195.00
10002386	Mounting Bolt, Wedge	\$85.00
10004709	Wedge	\$35.00
10011849	Shaft Coupler	\$130.00
593	Battery, Scan Reco, 7.2v, 3.3Ah	\$195.00
MAKBAT-9.6	Battery, Omnex, 9.6V, 3.6 Ah	\$95.00



DY FILTERS & HOUSINGS



PART NUMBER	DESCRIPTION	PRICE
S204637A	Suction Filter Housing (33m-57m)	\$825.00
S310899A	Suction Filter (33m-57m)	\$135.00
S326367A	Restriction Gauge	\$52.00
S204638A	Suction Filter Housing (37m)	\$1,050.00
S315936A	Suction Filter 37m	\$195.00
S325193A	Boom Filter Housing (33m-43m)	\$795.00
S323760A	Boom Filter 33m-48m	\$155.00
S321154A	Boom Filter Housing (52m-57m)	\$995.00
S321064A	Boom Filter 52m-57m	\$185.00
S364477A	Indicator, Boom Filter, Hydac	\$135.00
S207097A	Fuel Filter Unit	\$175.00

Most DY components are interchangeable with other popular pump manufacturers.
Check with our knowledgeable Parts Team if you would like to know more.

ALLIANCE FILTERS

PART NUMBER	DESCRIPTION	PRICE
RB37303	Boom Filter, 38-5 and Up	\$185.00
RB31203	Suction Filter, All Pumps	\$122.50
RB31103	Return Filter, 32m-63m	\$495.00
RB31303	Boom Filter, 20m-38m	\$160.00

PUTZMEISTER FILTERS

PART NUMBER	DESCRIPTION	PRICE
273827007	Filter Element, Boom	\$123.00
222895006	Filter Element, Suction	\$97.50
060440008	Gauge, Suction Filter	\$65.00
244085001	Indicator, Filtry Bypass	\$105.00
425836	Filter Element, Boom	\$295.00
416341	Filter Element, Suction	\$252.00
272318009	Filter Element (x3)	\$123.00
248911003	Filter Element	\$169.00
294073005	Filter Element, Suction (Long)	\$120.00
551476	Filter Element	\$115.00
534896	Filter Element, 10u-F	\$195.00

SCHWING FILTERS

PART NUMBER	DESCRIPTION	PRICE
10155110	Filter Element	\$168.00
10072694	Filter Element HP	\$97.50
10073397	Filter Element Main	\$175.00
10002989	Filter Element, Hyd Tank, Old Style	\$90.00
10190588	Filter Element	\$205.00
10163031	Filter Element	\$420.00
10021810	Filter Element	\$65.00

Most DY components are interchangeable with other popular pump manufacturers
Check with our knowledgeable Parts Team if you would like to know more.



1233 PSI CONCRETE HOSES

DESCRIPTION	TEXTILE	WIREBRAID
	PRICE	PRICE
2" HD x 25', Double Ended	\$510.00	\$690.00
2" HD x 50', Double Ended	\$850.00	\$1,205.00
2.5" HD x 25', Double Ended	\$645.00	\$855.00
2.5" HD x 50', Double Ended	\$1,050.00	\$1,485.00
3" HD x 10', Double Ended	\$475.00	\$660.00
3" HD x 10', Single Ended	\$395.00	\$480.00
3" HD x 20', Double Ended	\$715.00	\$1,025.00
3" HD x 25', Double Ended	\$835.00	\$1,195.00
3.5" HD Reducing x 10', Single Ended	\$595.00	N/A
3.5" HD Reducing x 15', Double Ended	\$825.00	N/A
3.5" HD Reducing x 20', Double Ended	\$999.00	N/A
4" HD x 10', Single Ended	\$460.00	\$610.00
4" HD x 10', Double Ended	\$580.00	\$790.00
4" HD x 20', Double Ended	\$915.00	\$1,225.00
4.5" ME Reducing x 10', Single Ended	\$1,050.00	N/A
4.5" ME Reducing x 12.5', Single Ended	\$1,150.00	N/A
5" ME x 10', Single Ended	\$800.00	\$800.00
5" ME x 12.5', Single Ended	\$900.00	\$900.00
5" ME x 10', Double Ended	\$1,050.00	\$1,050.00

BULK PURCHASE DISCOUNTS AVAILABLE



1250 PSI LAYFLAT HOSES

PART NUMBER	DESCRIPTION	PRICE
VIPER-3-15-1HD	Viper ICF Hose, 1250 PSI, 3" x 15', HD Single Ended	\$750.00
VIPER-3.5-15-1HD	Viper ICF Hose, 1250 PSI, 3.5" x 15', HD Single Reducing End	\$995.00
VIPER-4-15-1HD	Viper ICF Hose, 1250 PSI, 4" x 15', HD Single Ended	\$1,250.00

SHOTCRETE

PART NUMBER	DESCRIPTION	PRICE
ADFR075300ASSY	Air Hose Assembly, 3/4" Ends, 50', 300 PSI	\$195.00
SN20HD-CF	Shotcrete Nozzle Assembly, 2" HD	\$150.00
SNR20L	Shotcrete Nozzle, Tip Only, 2"	\$15.00





SYSTEM PARTS



CUSTOM BOOM SYSTEMS

MADE IN HOUSE | QUICK TURN AROUND | CUSTOM COLORS | SINGLE OR TWIN WALL

CALL TODAY FOR A QUOTE ON YOUR NEW CUSTOM BOOM SYSTEM!

CLAMPS

PART NUMBER	DESCRIPTION	PRICE
CG20HD	Snap Clamp, 2" HD, w/ Gasket & Pin	\$39.00
CG25HD	Snap Clamp, 2.5" HD, w/ Gasket & Pin	\$44.00
CG30HD	Snap Clamp, 3" HD, w/ Gasket & Pin	\$49.00
CG30HD-A	Snap Clamp, 3" HD Adjustable, w/ Gasket & Pin	\$59.00
CG40HD	Snap Clamp, 4" HD, w/ Gasket & Pin	\$54.00
CG40HD-A	Snap Clamp, 4" HD Adjustable, w/ Gasket & Pin	\$64.00
CG50HD	Snap Clamp, 5" HD, w/ Gasket & Pin	\$59.00
CG50HD-A	Snap Clamp, 5" HD Adjustable, w/ Gasket & Pin	\$69.00
CG50ME	Snap Clamp, 5" Metric, w/ Gasket & Pin	\$59.00
CG50ME-A	Snap Clamp, 5" Metric Adjustable, w/ Gasket & Pin	\$69.00
417249-1	Snap Clamp, 5" Metric, w/ Gasket & Pin, Putz	\$69.00
524948	Snap Clamp, 5" Metric, Putz Jib Style	\$99.00
S315076A	Clamp, 5" Metric, Two Bolt, w/o Bracket	\$95.00
426594	Clamp, 5" Metric, Two Bolt, w/o Bracket	\$90.00
S315074A	Clamp, 5" Metric, One Bolt, w/o Bracket	\$85.00
S322716A	Clamp, 5" Metric, Two Bolt, w/ Bracket	\$90.00
S324277A	Clamp, 5" Metric, One Bolt w/ Bracket, Greaseable	\$117.50
058102002	Clamp, 5" Metric, Four Bolt, w/o Bracket	\$75.00
246984003	Clamp, 5" Metric, Four Bolt, w/ Bracket	\$85.00
10133242	Clamp, 5" Metric, Two Bolt, w/ Flat Bracket	\$85.00
S322754A	Clamp, 5" ZX, Prime Port	\$117.50
051342005	Clamp, 5" ZX, Prime Port	\$110.00
S319510A	Clamp, 6" ZX, Bolt Style	\$165.00
241292004	Clamp, 6" ZX, Bolt Style	\$155.00
S315899A	Clamp, 6" ZX, Wedge Style	\$165.00
240948003	Clamp, 6" ZX, Wedge Style	\$155.00
10043560	Clamp, DN180, Schwing Back End	\$155.00



Most DY components are interchangeable with other popular pump manufacturers
Check with our knowledgeable Parts Team if you would like to know more.

CLAMP HARDWARE



PART NUMBER	DESCRIPTION	PRICE
CGPIN-S	Safety Pin, w/ Tag, 2"-2.5" Clamps	\$1.50
CGPIN-L	Safety Pin, w/ Tag, 3"-5" Clamps	\$1.75
018878004	Safety Pin, Putzmeister Style	\$2.50
S312374A	Eye Bolt, DY Style, Tightening Strap	\$11.50
S363644A	Nut, Eye Bolt, DY Style, Tightening Strap	\$3.00
S363645A	Clevis Pin Kit, DY Style, Tightening Strap	\$5.00
286017008	Eye Bolt, Putz Style, Tightening Strap	\$8.00
245103005	Tightening Strap, Putz Style	\$18.00
EN-S322754A	Extension Nut, DY Style, Prime Port Clamp	\$38.00
EB-S322754A	Eye Bolt, DY Style, Prime Port Clamp	\$10.00
S321185A	Wedge, Swing Elbow	\$52.00
426793	Wedge, Swing Elbow	\$40.00
240945006	Wedge, 6" ZX Clamp	\$27.50

GASKETS & O-RINGS

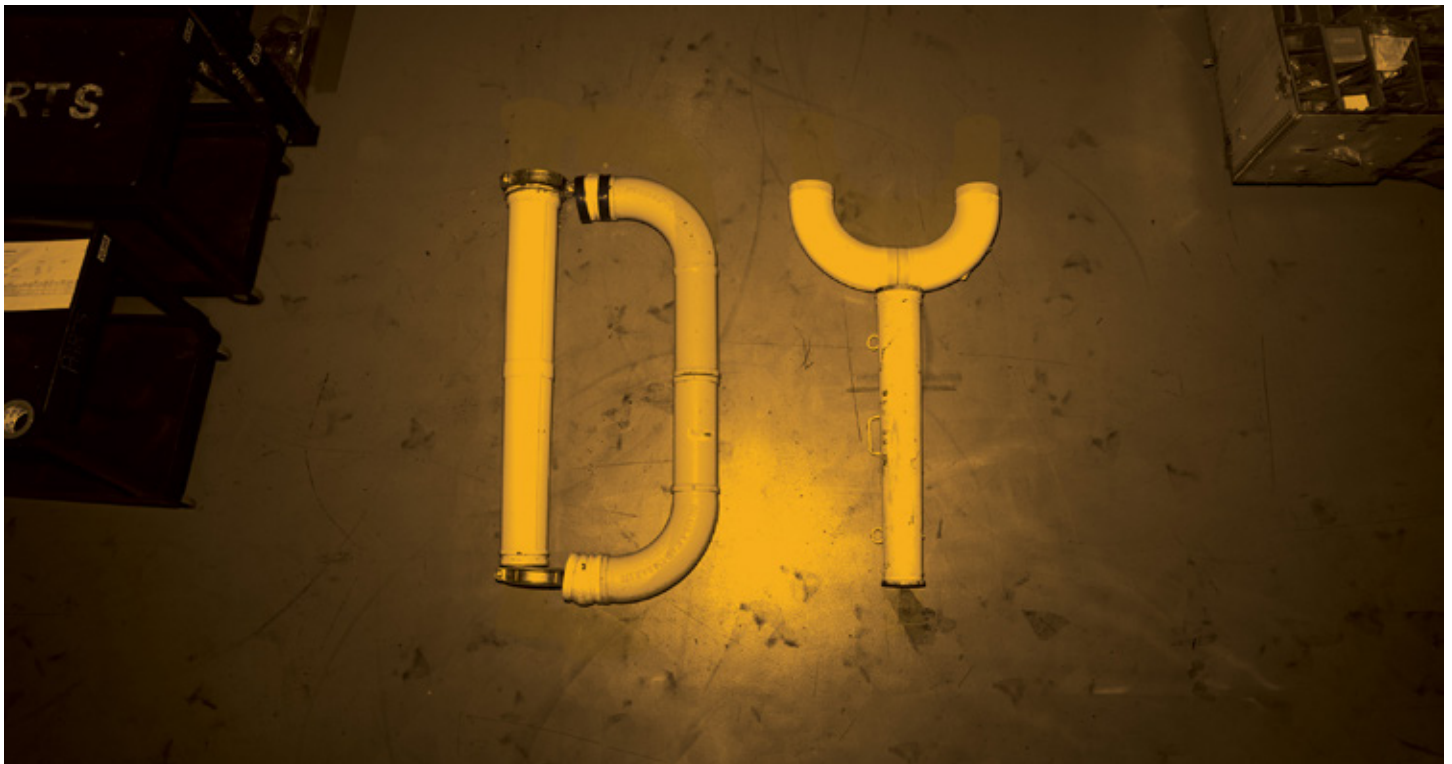


PART NUMBER	DESCRIPTION	PRICE
GA20HD	Gasket, 2" HD	\$3.75
GA25HD	Gasket, 2.5" HD	\$3.75
GA30HD	Gasket, 3" HD	\$4.50
GA40HD	Gasket, 4" HD	\$5.75
GA50HD	Gasket, 5" HD	\$7.00
GA50ME	Gasket, 5" ME, Swivel	\$7.00
GA50MC	Gasket, 5" ME, Open Cavity	\$3.50
GA60HD	Gasket, 6" HD, Swivel	\$10.00
GA60MC	Gasket, 6" ME, Open Cavity	\$12.50
S316299A	O-Ring, 5" ZX, Prime Port	\$5.00
S315900A	O-Ring, 6" ZX, Flap Elbow/Reducer	\$5.00

Most DY components are interchangeable with other popular pump manufacturers.
Check with our knowledgeable Parts Team if you would like to know more.

WELD ONS

PART NUMBER	DESCRIPTION	PRICE
WE20HD	Weld on End, 2" HD	\$14.00
WE25HD	Weld on End, 2.5" HD	\$15.00
WE30HD	Weld on End, 3" HD	\$16.00
WE40HD	Weld on End, 4" HD	\$17.00
WE50HD	Weld on End, 5" HD	\$19.00
WE50ME	Weld on End, 5" ME	\$19.00
WE50ME-BSW	Weld on End, 5" ME, Slip On, Boom, Single Wall	\$25.00
WE50ME-BTW	Weld on End, 5" ME, Slip On, Boom, Twin Wall	\$39.00
WE50ME-DSW	Weld on End, 5" ME, Slip On, Deck, Single Wall	\$26.00
WE50ME-DTW	Weld on End, 5" ME, Slip On, Deck, Twin Wall	\$40.00
EXBN-0000	Weld on End, 5" ME, Slip On, Boom, Twin Wall, High Impact	\$45.00
EXDN-0000	Weld on End, 5" ME, Slip On, Deck, Twin Wall, High Impact	\$46.00



Most DY components are interchangeable with other popular pump manufacturers
Check with our knowledgeable Parts Team if you would like to know more.

SINGLE WALL PIPE



PART NUMBER	DESCRIPTION	PRICE
PBSWHT5035	Boom Pipe, SW, 5" ME x 3M, 5mm Wall, Heat Treated	\$295.00
PDSWHT5037	Deck Pipe, SW, 5" ME x 3M, 7mm Wall, Heat Treated	\$375.00
ESW180590-HT	Elbow, SW, 5" ME, 90°, R275, Heat Treated	\$175.00
ESW180590S-HT	Elbow, SW, 5" ME, 90°, R187, Heat Treated	\$160.00
ESW180545-HT	Elbow, SW, 5" ME, 45°, R275, Heat Treated	\$120.00
ESW180530	Elbow, SW, 5" ME, 30°, R187	\$85.00
ESW180520	Elbow, SW, 5" ME, 20°, R187	\$75.00
ESW180515	Elbow, SW, 5" ME, 15°, R187	\$75.00
ESW180510	Elbow, SW, 5" ME, 10°, R187	\$70.00

TWIN WALL PIPE



PART NUMBER	DESCRIPTION	PRICE
EXBN-3000	Boom Pipe, TW-High Imp, 5" ME x 3M, 5mm Wall	\$475.00
EXDN-3000	Deck Pipe, TW-High Imp, 5" ME x 3M, 7mm Wall	\$595.00
EXEN-0590	Elbow, TW, 5" ME, 90°, R275, High Imp.	\$349.00
EXEN-0590S	Elbow, TW, 5" ME, 90°, R187, High Imp.	\$339.00
EXEN-0545	Elbow, TW, 5" ME, 45°, R275, High Imp.	\$290.00
EXEN-0530	Elbow, TW, 5" ME, 30°, R187, High Imp.	\$275.00
EXEN-0520	Elbow, TW, 5" ME, 20°, R187, High Imp.	\$199.00
EXEN-0515	Elbow, TW, 5" ME, 15°, R187, High Imp.	\$199.00
EXEN-0510	Elbow, TW, 5" ME, 10°, R187, High Imp.	\$199.00

HIGH PRESSURE ELBOWS



PART NUMBER	DESCRIPTION	PRICE
EL6090ZX-SW	High Pressure Elbow, 6", 90°, ZX to ZX, Standard	\$375.00
S356113A	High Pressure Elbow, 6", 90°, ZX to ZX, SW-Heat Treated	\$495.00
EL6090ZX-TW	High Pressure Elbow, 6", 90°, ZX to ZX, CCI-Twin Wall	\$800.00
EXES-0690	High Pressure Elbow, 6", 90°, ZX to ZX, High Imp. Twin Wall	\$850.00
EL6090ZXME-SW	High Pressure Elbow, 6", 90°, ZX to ME, Single Wall	\$375.00
EL6090SW-SW	High Pressure Elbow, 6", 90, Schwing Ends, Single Wall	\$375.00

Most DY components are interchangeable with other popular pump manufacturers.
Check with our knowledgeable Parts Team if you would like to know more.

PIPE REDUCERS

PART NUMBER	DESCRIPTION	PRICE
RE504036MH	Reducer, 5" Metric x 4" HD, 36" Long	\$195.00
RE504036HH	Reducer, 5" HD x 4" HD, 36" Long	\$190.00
RE504015MH	Reducer, 5" Metric x 4" HD, 15" Long	\$145.00
RE504015HH	Reducer, 5" HD x 4" HD, 15" Long	\$145.00
RE403036HH	Reducer, 4" HD x 3" HD, 36" Long	\$165.00
RE403015HH	Reducer, 4" HD x 3" HD, 15" Long	\$135.00
RE402536HH	Reducer, 4" HD x 2.5" HD, 36" Long	\$165.00
RE302536HH	Reducer, 3" HD x 2.5" HD, 36" Long	\$150.00
RE302036HH	Reducer, 3" HD x 2" HD, 36" Long	\$130.00
RE252036HH	Reducer, 2.5" HD x 2" HD, 36" Long	\$120.00



BACKEND REDUCERS

PART NUMBER	DESCRIPTION	PRICE
S315902A	Reducer, 6" ZX x 5" Metric, 1200mm, Standard	\$400.00
S356114A	Reducer, 6" ZX x 5" Metric, 1200mm, SW-Heat Treated	\$575.00
RS651200SKM	Reducer, 6" Metric x 5" Metric, 1200mm, Heat Treated	\$550.00
S317287A	Reducer, 6" ZX x 5" Metric, 1200mm Twin Wall	\$850.00
EXRS-1200	Reducer, 6" ZX x 5" Metric, 1200mm, High Imp. Twin Wall	\$995.00
RTW651200MM	Reducer, 6" Metric x 5" Metric, 1200mm Twin Wall	\$825.00



SLICK LINE

PART NUMBER	DESCRIPTION	PRICE
SLP501011HH	Slick Line Pipe, 5" HD x 10', Double Ended, 11 Gauge	\$205.00
SLP401011HH	Slick Line Pipe, 4" HD x 10', Double Ended, 11 Gauge	\$165.00
SLP301011HH	Slick Line Pipe, 3" HD x 10', Double Ended, 11 Gauge	\$142.00
SLP251011HH	Slick Line Pipe, 2.5" HD x 10', Double Ended, 11 Gauge	\$128.00
SLP201011HH	Slick Line Pipe, 2" HD x 10', Double Ended, 11 Gauge	\$115.00



Boom Systems Available Now! Call Today For A Quote!

Most DY components are interchangeable with other popular pump manufacturers
Check with our knowledgeable Parts Team if you would like to know more.

CLEAN OUT



PART NUMBER	DESCRIPTION	PRICE
CB20S	Clean Out Ball, 2", Soft	\$5.00
CB25S	Clean Out Ball, 2.5", Soft	\$5.75
CB30M	Clean Out Ball, 3", Medium	\$6.75
CB40M	Clean Out Ball, 4", Medium	\$7.50
CB50M	Clean Out Ball, 5", Medium	\$8.75
CB60M	Clean Out Ball, 6", Medium	\$10.00
CC997M	Clean Out Cube, 9 x 9 x 7, Medium	\$13.00
ARP5	Clean Out Pig, 5" Rubber	\$95.00
11217841	Wash Out Bag, 42" x 72" x 16", Bamboo Supports x4	\$65.00
541915	Prime Port Cap, w/ Ball Stopper	\$250.00
202394	Scraper, S-Tube	\$75.00

BLOW OUT CAPS



PART NUMBER	DESCRIPTION	PRICE
20HDBOCAP	Blow Out Cap, 2" HD, Single 1/2" Port, w/o Fittings	\$150.00
25HDBOCAP	Blow Out Cap, 2.5" HD, Single 1/2" Port, w/o Fittings	\$155.00
30HDBOCAP	Blow Out Cap, 3" HD, Single 1/2" Port, w/o Fittings	\$180.00
40HDBOCAP	Blow Out Cap, 4" HD, Single 1/2" Port, w/o Fittings	\$195.00
50HDBOCAP	Blow Out Cap, 5" HD, Single 1/2" Port, w/o Fittings	\$205.00
50MEBOCAP	Blow Out Cap, 5" ME, Single 1/2" Port, w/o Fittings	\$205.00
BOCAP-FK	Fitting Kit, Blow Out Cap	\$60.00

HOSE PAN

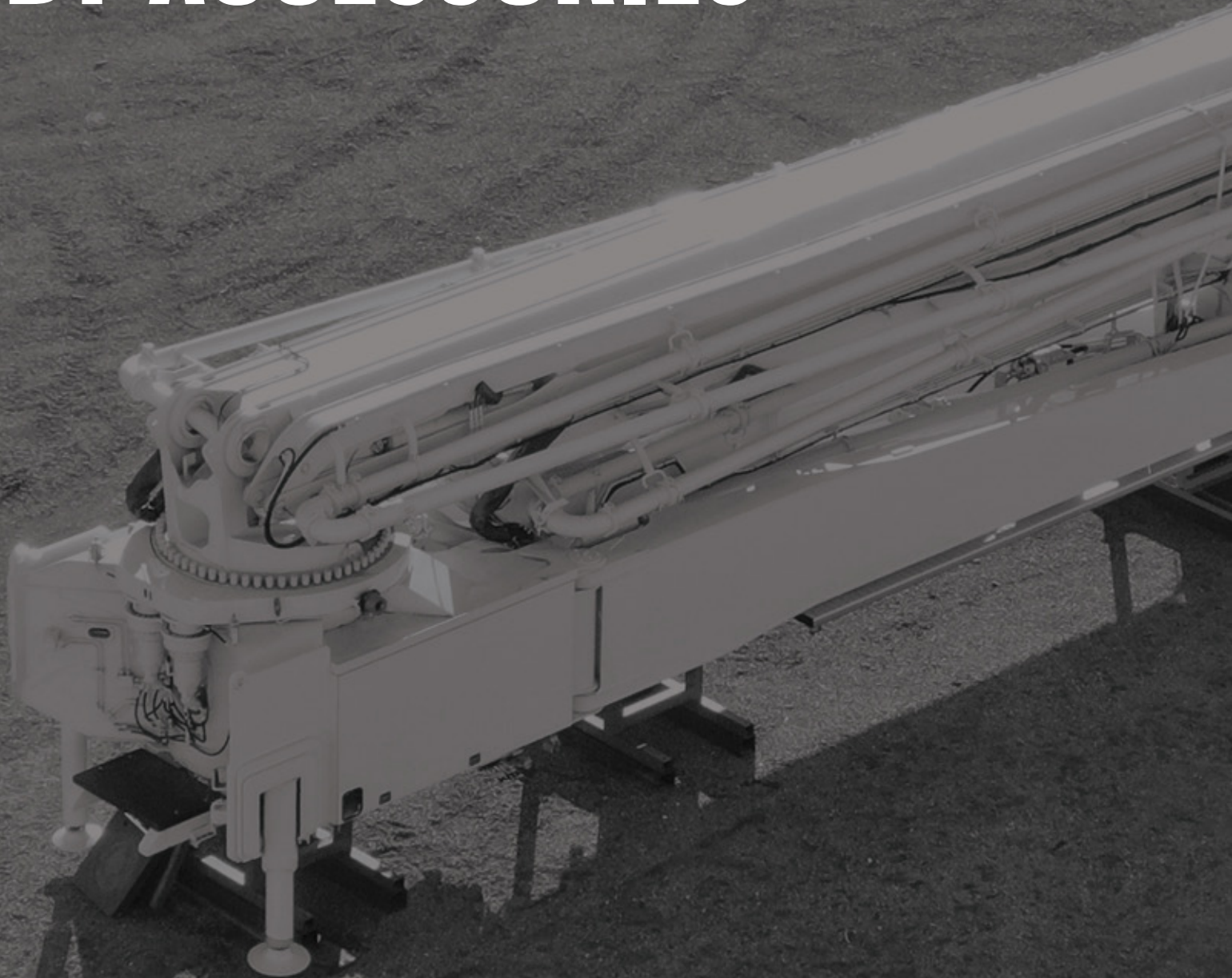


PART NUMBER	DESCRIPTION	PRICE
089983125	Hose Pan	\$175.00

Most DY components are interchangeable with other popular pump manufacturers.
Check with our knowledgeable Parts Team if you would like to know more.



DY ACCESSORIES





SPARE FITTING KIT

PART NUMBER	DESCRIPTION	PRICE
MHSFKIT	Fitting Kit, Complete with Test Hose & Gauges	\$895.00

WRENCHES



PART NUMBER	DESCRIPTION	PRICE
RW21X26	Ratchet Wrench, 21mm x 26mm	\$89.00
RW26X32	Ratchet Wrench, 26mm x 32mm	\$99.00



MUDFLAPS

PART NUMBER	DESCRIPTION	PRICE
DY-MUDFLAP	Mudflap, DY Logo, 24" x 36"	\$38.00

OUTRIGGER PAD RACKS & PADS



PART NUMBER	DESCRIPTION	PRICE
S326500B	Outrigger Pad, 500mmx 500mm, UHMW	\$275.00
S358818A	Outrigger Pad, 600mmx 600mm, UHMW	\$375.00
24X24ORPAD	Outrigger Pad Wood 24" x 24" 2.75"	\$180.00
30X30ORPAD	Outrigger Pad Wood 30" x 30" 2.75"	\$258.00
ORPH30	Outrigger Pad Rack, Steel, 30"	\$595.00
S216876B	Outrigger Pad Rack, Steel, 24"	\$495.00

SAFETY STRAPS



PART NUMBER	DESCRIPTION	PRICE
RS20015W	Ratchet Strap & Buckle, 2" x 15'	\$48.00
EE2901X3	Nylon Sling, 1" x 3', Double Ply	\$17.00
EE2901X6	Nylon Sling, 1" x 6', Double Ply	\$23.00
WA-2	Whip Check Cable Assembly, 1/4"	\$30.00
S202789A	Safety Rope Assembly, w/ Metal Eyelets	\$27.00
S312386A	Shackle, Safety Rope Assembly	\$6.00

Most DY components are interchangeable with other popular pump manufacturers.
Check with our knowledgeable Parts Team if you would like to know more.

HOPPER VIBRATORS



PART NUMBER	DESCRIPTION	PRICE
EDC12202	Hopper Vibrator, 12VDC, 440ft/lb	\$640.00
EDC24202	Hopper Vibrator, 24VDC, 440ft/lb	\$640.00
S328408A	Vibrator Mounting Bracket	\$70.00

PRIMER



PART NUMBER	DESCRIPTION	PRICE
97134	Slick Pak I, 8oz Bag, Pumping Primer	\$8.50
	CASE OF 60 BULK PRICE	\$480.00
97136	Slick Pak II, 8oz Bag, Pumping Primer	\$11.00
	CASE OF 60 BULK PRICE	\$600.00
97139	Slick Pak II, 2x 4oz Bags, Pumping Primer	\$11.00
	CASE OF 60 BULK PRICE	\$630.00
95050	Mini Delay Set, 8oz Bag, Pumping Retardant	\$7.50
	CASE OF 60 BULK PRICE	\$420.00

TOOL BOXES

PART NUMBER	DESCRIPTION	PRICE
S310903A	Tool Box Complete w/ Tools, Boom Pumps	\$645.00
S310903A-LP	Tool Box Complete w/ Tools, City Pumps	\$645.00
TRID242436	Aluminum Chassis Mount Tool Box, 24x24x36	\$905.00
TRID242430	Aluminum Chassis Mount Tool Box, 24x24x30	\$905.00
TRID242424	Aluminum Chassis Mount Tool Box, 24x24x24	\$995.00
TRID241818	Aluminum Chassis Mount Tool Box, 24x18x18	\$775.00

AIR CUFF



PART NUMBER	DESCRIPTION	PRICE
AIRCUFFKIT	Air Cuff Install Kit, w/o Boom Length Air Hose	\$2,995.00
V50FAC-A	Fabric Air Cuff, w/ Valve	\$1,895.00
V50FAC-REBUILD	Bladder Repair Kit, Air Cuff	\$279.00
FZ-08-250	Air Hose Spool, Flexzilla, 1/2" Push on, 250'	\$495.00

Most DY components are interchangeable with other popular pump manufacturers
Check with our knowledgeable Parts Team if you would like to know more.

GREASING SYSTEM



PART NUMBER	DESCRIPTION	PRICE
S358768A	Grease Block, Manual, 4 Ports, Boom Mount	\$99.00
GDB-LP	Grease Block, Manual, 7 Ports, Line Pump	\$275.00
S316241A	Grease Distribution Block, 8 Ports, Old Style	\$395.00
S356186A	Grease Distribution Block, 8 Ports, New Style	\$395.00
S212155A	Autogreaser, Beka, 24VDC	\$1,150.00
S366587A	Reservoir, Autogreaser, Beka	\$80.00
S204497A	Grease Pump, Pneumatic, Complete Assembly	\$645.00
30.250	Grease Hose w/ Lining, Hi-Pressure, Per Foot	\$8.50
20.216	Tube End, Straight, Reuseable, 6mm	\$9.00
20.198	Tube End, 90°. Reuseable, 6mm	\$13.50
20.215	Threaded Sleeve, Tube Ends, Reuseable	\$8.50
7002479	Grease Nipple, Straight, 1/8" BSPP	\$1.75
2408K17	Grease Nipple, Straight, 1/4" BSPP	\$5.00
S316131A	Check Valve, Grease Line, 1/8" BSPP	\$9.50



Most DY components are interchangeable with other popular pump manufacturers.
Check with our knowledgeable Parts Team if you would like to know more.



REMOTE SYSTEMS

HBC REMOTE SYSTEMS



PART NUMBER	DESCRIPTION	PRICE
S217225A	HBC Remote System, 4 Section, 2 Joystick, 727 Gen II	\$7,750.00
S203673B	HBC Remote System, 5 Section, 2 Joystick, 727 Gen II	\$8,250.00
S210188B	HBC Remote System, 6 Section, 3 Joystick, 727 Gen II	\$8,750.00

HBC REMOTE REPLACEMENT PARTS



PART NUMBER	DESCRIPTION	PRICE
292116003	Joystick, Old Style Ergo, 2-Axis	\$1,850.00
291273002	Joystick, Old Style Ergo, 3-Axis	\$1,950.00
487160	Joystick, New Style Ergo, 2-Axis	\$1,850.00
487161	Joystick, New Style Ergo, 3-Axis	\$1,950.00
S361531A	Joystick, Spectrum/Gen II, 3-Axis	\$1,600.00
AET00080	Bellow Kit, Small Hole, Radiomatic	\$40.00
AET00440	Bellow Kit, Large Hole, Spectrum/Gen II (292129003)	\$40.00
1TL1-1A	Toggle Switch, On-Off-On	\$90.00
1TL1-3	Toggle Switch, On-On	\$90.00
1TL1-3D	Toggle Switch, Locking On x Locking On	\$90.00
1TL1-7	Toggle Switch, Mom-Off-Mom	\$50.00
1TL1-8	Toggle Switch, Mom-Off	\$50.00
1NT1-2G	Toggle Switch, Locking Off x Non-Locking On	\$90.00
8536K1A	Toggle Switch, Lift/Locking On x Off x Lift/Locking On	\$135.00
8536K3N	Toggle Switch, Lift/Non-Locking x Off x Mom-On	\$135.00
241416000	Rubber Boot, Small Toggle Switches	\$10.00
249520008	Rubber Boot, Large Toggle Switches	\$10.00
241401002	E-Stop Button, HBC Remote, Two Contacts	\$99.00



We repair all HBC radio remotes!

Not only do we repair remotes, we carry complete inventories of HBC radio remote parts in stock.

We also custom build radio remotes for any brand of concrete pump.

Contact us today for more information.

HBC REMOTE ACCESSORIES

PART NUMBER	DESCRIPTION	PRICE
AS000800	Waist Belt, HBC Spectrum Remotes, Straight Clips	\$160.00
288778002	Waist Belt, HBC Ergo Remotes, Angled Carabiners	\$115.00
AS006000	Shoulder Harness, HBC Spectrum Remotes, Straight Clips	\$135.00
BA405131	Gen II Battery w/ Level Indicator, 2-Joy Trans, 3.7v, 6Ah	\$375.00
BA406130	Gen II Battery w/ Level Indicator, 3-Joy Trans, 3.7v, 9Ah	\$395.00
QS4050B0	Battery Charger, Gen II Batteries	\$495.00
458017	HBC Battery, Long Version, 4.2Ah	\$140.00
496070	HBC Battery, Tele-teach, 2.1Ah	\$520.00
QD115300	HBC Battery Charger, Long	\$750.00
461523	HBC Battery, Short Version, 2.1Ah	\$195.00
QD109300	HBC Battery Charger, Short	\$410.00

AUTECH REMOTE SYSTEMS

PART NUMBER	DESCRIPTION	PRICE
LKN08516UOLKN8	Remote System, DY Line Pumps, 8 Push Buttons	\$2,250.00
KSK4163UO	Remote System, DY Line Pumps, Toggle Switches	\$2,450.00
TLKN08308UO	Remote Control, DY Line Pumps, 8 Push Buttons	\$1,695.00
TSK4163UO	Remote Control, DY Line Pumps, Toggle Switches	\$1,995.00
FMA98KM0-2J4S	Remote System, DY Boom Pumps, 2-J/S, 4-Sect.	\$7,750.00
FMA98KM0-2J5S	Remote System, DY Boom Pumps, 2-J/S, 5-Sect.	\$8,295.00



AUTECH REMOTE ACCESSORIES

PART NUMBER	DESCRIPTION	PRICE
LPM01	Battery, Line Pump Remotes, Lithium	\$175.00
LPM02	Battery, Boom Pump Remotes, Lithium	\$295.00
MHM03	Battery, Line Pump Remotes, Nickel-Metal	\$125.00
ROCABA02E03B0	Battery Charger, Line Pump Remotes, Autec	\$250.00
ROCABA02E06B0	Battery Charger, Boom Pump Remotes, Autec	\$375.00
ROCING00P0017	Waist Belt, Autec Remotes, All Models	\$135.00
ROCING00P0033	Remote Cover w/ Strap, Line Pumps, Autec	\$125.00



Most DY components are interchangeable with other popular pump manufacturers
Check with our knowledgeable Parts Team if you would like to know more.



TROWEL PANS & BLADES



TROWEL PANS

PART NUMBER	DESCRIPTION	PRICE
BWED24-4Z	Edger Pan w/ Z-Brackets, 24"	\$145.00
SFP30-4Z	Edger Pan w/ Z-Brackets, 30", Superflat	\$245.00
SFP36-4S	Pan w/ Safety Catch, 4-Blade, 36.5", Superflat	\$255.00
UFP465-5S	Universal Pan w/ Safety Catch, 5-Blade, 46", Flat	\$338.00
USFP465-5S	Universal Pan w/ Safety Catch, 5-Blade, 46", Superflat	\$338.00
USFP465-6S	Universal Pan w/ Safety Catch, 6-Blade, 46", Superflat	\$338.00
SFP48-5S	Pan w/ Safety Catch, 5-Blade, 48.125", Superflat	\$338.00
SFP46-6S	Pan w/ Safety Catch, 6-Blade, 46.313", Superflat	\$338.00
SFP59-6S	Pan w/ Safety Catch, 6-Blade, 59.25", Superflat	\$495.00



TROWEL BLADES

PART NUMBER	DESCRIPTION	PRICE
BTR4962	Finish Blades, 4" x 9" x 0.062", Box of 4	\$59.00
WTR5962	Finish Blades, 5" x 9.25" x 0.062", Box of 4	\$59.00
TR61494	Finish Blades, 6" x 14" x 0.094", Box of 4	\$69.00
TR61694	Finish Blades, 6" x 16" x 0.094", Box of 4	\$89.00
TR61894	Finish Blades, 6" x 18" x 0.094", Box of 4	\$93.00
TR62394	Finish Blades, 6" x 23" x 0.094", Box of 4	\$123.00
CO81494	Combo Blades, 8" x 14" x 0.094", Box of 4	\$98.00
CO81694	Combo Blades, 8" x 16" x 0.094", Box of 4	\$105.00
CO81894	Combo Blades, 8" x 18" x 0.094", Box of 4	\$118.00
CO82394	Combo Blades, 8" x 23" x 0.094", Box of 4	\$149.00
CL954F	Float Blades, 10" x 14", Box of 4	\$145.00
CL444F	Float Blades, 10" x 18", Box of 4	\$155.00



Most DY components are interchangeable with other popular pump manufacturers
Check with our knowledgeable Parts Team if you would like to know more.

TAKING UTILIZATION TO A NEW LEVEL





DY EMERGENCY SUPPORT NUMBERS

Nationwide, you can count on DY's customer support.

With our over 30-years of end user experience, we know how critical it is for a quick response when emergency support is needed. In the event support is required while you're on-site, you can call our two 24/7 emergency support contacts:

Darcy Feihle: 403-901-7812

Chris Smith: 682-351-0494

Texas Direct Parts & Service: 682-273-0555

Canada Direct Parts & Service: 403-723-6909

North America Toll Free: 1-844-397-8677



Darcy Feihle
Product & Technical
Support Director



Chris Smith
Customer Support
& Service Director



DY CUSTOMER SUPPORT



Joey Browning

North American Parts Director
Toll Free: 1-844-397-8677
JoeyB@dyconcretepumps.com



Brian Dominguez

USA Parts Technician
Toll Free: 1-844-397-8677



Tanner Mullins

Production Procurement Technician
Toll Free: 1-844-397-8677



Jack Keeker

Service Technician & Outside Service
Direct: 682-800-7123
Toll Free: 1-844-397-8677
Jack.Keeker@dyconcretepumps.com



Mike Morris

North American Sales Manager
Direct: 214-960-9124
Toll Free: 1-844-397-8677
Mike.Morris@dyconcretepumps.com



Darcy Feihle

Product & Tech. Support Director
Direct: 682-999-9859
Toll Free: 1-844-397-8677
Darcy@dyconcretepumps.com



Chris Smith

Customer Support & Service Director
Direct: 682-351-0494
Toll Free: 1-844-397-8677
SmithC@dyconcretepumps.com



Dusty Barrett

Service Manager
Toll Free: 1-844-397-8677
DYParts@dyconcretepumps.com



Casey Ray

Service Admin
Toll Free: 1-844-397-8677



Cody Swindell

Production Manager
Toll Free: 1-844-397-8677



Jayson Wallace

Assistant Production Manager
Toll Free: 1-844-397-8677



Jose Garcia

Paint Department Manager
Toll Free: 1-844-397-8677



Wayne Allen

Vice President of Sales
Direct: 713-281-0209
Toll Free: 1-844-397-8677
Wayne@dyconcretepumps.com



Jason Delehay

General Manager
Direct: 682-350-9949
Toll Free: 1-844-397-8677
Jason@dyconcretepumps.com



Tina Mooney

Business Director
Toll Free: 1-844-397-8677



Joe Delehay

President
Toll Free: 1-844-397-8677
Joe@dyconcretepumps.com





**QUALITY YOU DESERVE,
DEPENDABILITY YOU CAN COUNT ON.**

LOCATIONS



Dallas-Fort Worth, Texas Headquarters

11917 East FM 917
Alvarado, Texas, USA
76009

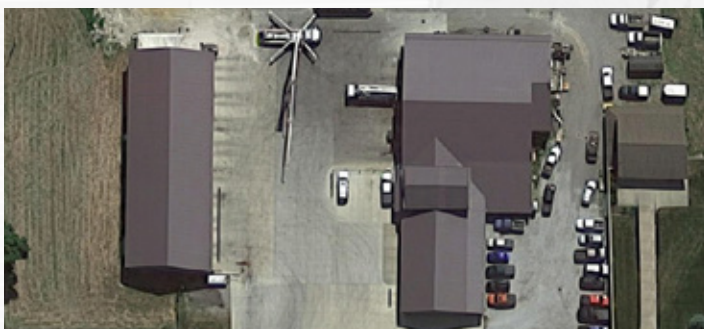
Parts, Service, Production, Engineering, and
Administration



Canada Branch

10720-48St. SE
Calgary, AB, Canada
T2C 3E1

Parts and Service



North Eastern Dealer Keim Concrete Pumping, Inc.

1610 Co Rd 200
Dundee, Ohio, USA
44624

Sales, Parts, and Service

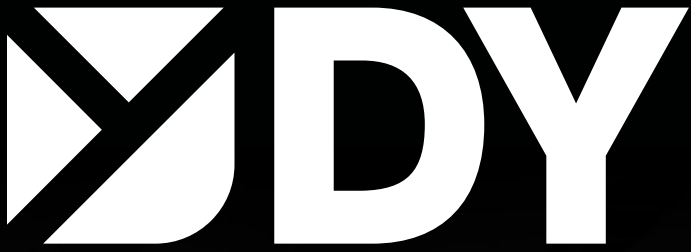




Concrete Pumps Inc.







Concrete Pumps Inc.

**BUILT TO
PERFORM**

1-844-397-8677

www.DYConcretePumps.com



DYConcretePumps

Dallas-Forth Worth, Texas Headquarters

11917 East FM 917
Alvarado, Texas, USA
76009