



**BUILT TO
PERFORM**



PRODUCT GUIDE



ABOUT DY

Founded in 2015, DY Concrete Pumps North America is a premier manufacturer and distributor of concrete pumps, proudly headquartered in Dallas-Fort Worth, Texas. With over a decade of experience, DY has earned a reputation for providing reliable and innovative solutions to the concrete industry across North America. Our current lineup includes 15 concrete pump models and continues to grow, with 10 boom pumps, 2 line pumps, and 3 trailer pumps available.

PUMPS

DY Concrete Pumps designs and manufactures machines that prioritize reliability, ease of use, and operator-friendly features. Built with simplicity in mind yet engineered for power and efficiency, every DY pump is designed by concrete pumpers for concrete pumpers. From boom pumps to line pumps and trailer pumps, our equipment is built to perform on the toughest jobs, delivering the power and reliability needed to get the job done right.

PARTS

Our 7,000-square-foot parts facility in Texas serves the entire North American market. We stock a wide range of OEM and aftermarket parts to keep your pump moving on the jobsite. From standard components to specialized solutions, our inventory and expertise ensures that you get the parts you need, when you need them. With our new online parts shop, customers can also browse, order, and manage parts quickly and conveniently, anytime.

SERVICE

DY's Service Department provides maintenance and repair for concrete pumps, trucks, and heavy equipment at our Texas Service Center and on-site. Service does not end with the sale at DY Concrete Pumps. We are committed to long-term customer support, keeping machines operating efficiently for their entire lifetime with responsive, dependable service.



WHY DY

At DY Concrete Pumps, a strong company begins with strong people. As a family-owned and operated business with deep industry roots, DY is backed by a team that brings generations of hands-on experience to every customer relationship. When you work with DY, you are supported by people who understand real job sites and the demands of keeping equipment moving.

Calls to the 24/7 support line connect customers directly with technicians who work on concrete pumps every day, delivering clear and reliable guidance when it is needed. The Texas Service Center is staffed by knowledgeable technicians, and a network of traveling technicians are ready to provide on-site support when required.

DY maintains a strong presence across North America to keep customers supported wherever they operate. With headquarters in Dallas-Fort Worth, Texas, a parts and service facility in Calgary, Alberta, and a dealer location in Dundee, Ohio, DY provides coverage that helps reduce downtime and keep projects on schedule.

DY is committed to investing in American people, facilities, and long-term industry growth. That commitment continues long after delivery, with service and support provided throughout the life of every machine. Backed by more than 470 years of combined industry experience, DY offers more than equipment. You gain a dependable partner focused on keeping your operation running.

DY Concrete Pumps are built to perform. Engineered for power, simplicity, and reliability, every machine delivers under pressure and outlasts the rest. Designed with operators in mind, DY pumps give you control, precision, and confidence to get the job done right.

360° CONTINUOUS SWING TURRET

Our patented 360° Continuous Swing Turret rotates without limits, letting operators set up faster, place concrete with precision, and work the way they want. Fewer setup errors, faster pours, and complete control.

NO CHINESE STEEL. EVER.

DY pumps are built with premium materials and components, never Chinese steel. This standard ensures unmatched strength, consistency, and quality in every machine we build.

EMERGENCY ELECTRICAL BYPASS SWITCHES

Three built-in electrical bypass switches keep machines running even during electrical faults, letting you finish the job first and handle repairs later.

HIGH PERFORMANCE PUMP KITS

Our superior pump kits come standard for each unit and are engineered for maximum output and reliability, giving DY the edge on high-volume, high-demand jobs.

INDUSTRY-LEADING PAINT

Every DY pump is finished with high-quality paint applied through a state-of-the-art, multi-step process. Our approach ensures lasting protection and a finish that stands up second to none.

WORLD CLASS FACILITIES

With a 50,000 sq. ft. headquarters, the largest paint booth in the South, in-house driveline, pipe, and hydraulic line fabrication, and vinyl graphics production, DY manufactures quality products that keep machines running strong.

The DY Difference is in every detail. Stronger builds, smart operator-friendly design, and the kind of performance that speaks for itself. ***Experience it on the job and see the DY Difference firsthand.***

PRODUCT FEATURES



Electrical System

All DY electrical systems are built to be as simple and reliable as possible. Our systems are built with robust diode boards and relays with LED indicators for easy troubleshooting. Reliable hardware that's simple to fix, that's the DY Difference.

Options:

Every operator is different, so every pump is too. DY offers a range of available options to build your machine exactly how you like it.

Available options:

- Multiple Styles of Remotes (HBC, Autec, & Scanreco)
- Air-Cuffs and Upgraded Air Compressors
- Tool and Equipment Storage
- Unlimited Paint and Vinyl
- Custom Builds Upon Request

PRODUCT FEATURES

1 360 CONTINUOUS SWING

DY's flagship feature. Models with our unique 360-degree swivel coupling can rotate their turrets endlessly in both directions, offering unparalleled flexibility.

2 EMERGENCY BYPASS SWITCHES

Informed by decades of concrete pumping expertise, we've identified three critical machine issues that can halt work. Our electrical bypass switches let you complete the job without losing time or concrete, and address the problem later.

3 CLOSED LOOP HYDRAULICS

Our closed loop hydraulic system ensures a high volume output with a consistent and smooth flow at all pressure levels.

4 ELECTRONICALLY CONTROLLED HYDRAULIC VALVES

Smooth pump operation with electronically controlled valves, offering full manual overrides and fewer parts for low maintenance.

5 AUTOMATIC GREASING

Automatic electric hopper greasing system for hassle-free maintenance. Boom greasing systems are also standard on models 57X-6RZ and above.

6 REAR REMOTE PANEL

The rear position of the switch box provides easy access for operators to fully control the machine when needed.

7 HOPPER

Designed for ease of filling and cleaning, our hopper includes industry standard safety features and interupt switches.

8 WATER PUMP

High-pressure, hydraulic-driven centrifugal pump enables quick and efficient washouts.

9 AIR GREASE PUMP

Standard on all models, this air-operated grease pump allows for easy manual greasing.

10 OIL COOLER

High capacity oil cooler designed for sustained hydraulic performance in any climate.

11 HYDRAULIC PUMPS

Delivers exceptional performance, backed by the reliability of German Rexroth pump technology.

CLOSED LOOP HYDRAULIC SYSTEM

A closed loop hydraulic system is a specialized hydraulic design where the hydraulic oil continuously circulates between the hydraulic pump and pumping cylinders without returning directly to the tank between cycles. This system controls the movement of the pumping cylinders with exceptional efficiency and precision. The design allows for smoother and faster changes in direction, which is critical for keeping concrete flowing without interruption.

All DY Concrete Pumps operate with a closed loop hydraulic pumping system, providing consistent performance and durability across the entire lineup.

Benefits of Closed Loop Hydraulic Systems:

High Efficiency

Less energy loss means more of the engine's power is directed at pumping concrete, improving overall productivity.

Smooth Operation

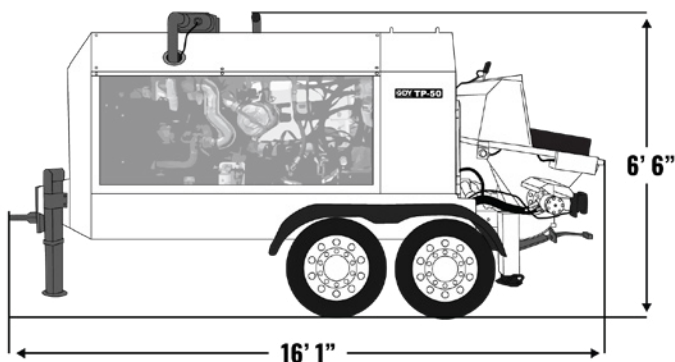
The pump transitions between strokes seamlessly without the need for complicated spool manifolds reducing shock and vibration. This helps maintain a steady, consistent concrete flow.

Low Maintenance Needs

With reduced wear on components due to minimum valving needed, closed loop systems can help extend service intervals and minimize downtime.

For concrete pump operators, a closed loop hydraulic system means more consistent performance on the jobsite, better handling in challenging conditions, and a machine that is built for long-term reliability. Whether working on high-volume pours or tight timelines, this system keeps your pump running smoothly from start to finish.





TP-30 SPECIFICATIONS

DIMENSIONS & WEIGHT

Weight	7,606 lbs	3,450 kg
Length	16' 1"	4.91 m
Width	6' 6"	2 m
Height	7"	2.15 m

CAPACITIES

Hopper	12.4 ft ³	350L
Hydraulic Tank	62 Gal	234L
Fuel Tank	30 Gal	112L

TECHNICAL SPECIFICATIONS

Output: Rod Side	50 yd ³ /hr	38 m ³ /hr
Output: Piston Side	34 yd ³ /hr	26 m ³ /hr
Pressure: Rod Side	798 psi	55 bar
Pressure: Piston Side	1,155 psi	80 bar
Material Cylinder Diameter	6"	150 mm
Material Cylinder Stroke Length	39"	1000 mm
Max Strokes Per Minute	Piston Side	24
Hydraulic System	Closed Loop	
Hydraulic System Pressure	4,061 psi	280 bar

Images and specifications are for reference only and may vary by truck model. DY Corporation may modify specifications without notice. Contact the factory for options.

TP-50 SPECIFICATIONS

DIMENSIONS & WEIGHT

Weight	8,047 lbs	3,650 kg
Length	16' 1"	4.91 m
Width	6' 6"	2 m
Height	7'	2.15 m

CAPACITIES

Hopper	12.4 ft ³	350L
Hydraulic Tank	62 Gal	234L
Fuel Tank	30 Gal	112L

TECHNICAL SPECIFICATIONS

Output: Rod Side	73 yd ³ /hr	56 m ³ /hr
Output: Piston Side	50 yd ³ /hr	38 m ³ /hr
Pressure: Rod Side	798 psi	55 bar
Pressure: Piston Side	1,160 psi	80 bar
Material Cylinder Diameter	6"	150 mm
Material Cylinder Stroke Length	39"	1000 mm
Max Strokes Per Minute	Piston Side	36
Hydraulic System	Closed Loop	
Hydraulic System Pressure	4,061 psi	280 bar

TP-70 SPECIFICATIONS

DIMENSIONS & WEIGHT

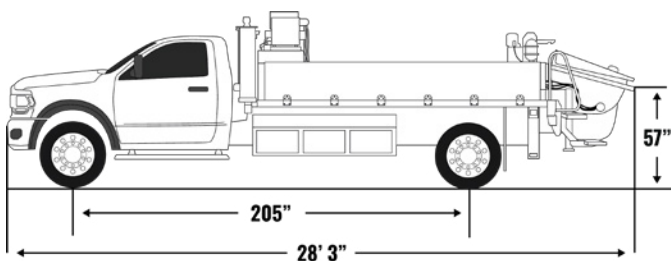
Weight	8,047lbs	3,650 kg
Length	16' 1"	4.91 m
Width	6' 6"	2 m
Height	7'	2.15 m

CAPACITIES

Hopper	12.4 ft ³	350L
Hydraulic Tank	62 Gal	234L
Fuel Tank	30 Gal	112L

TECHNICAL SPECIFICATIONS

Output: Rod Side	105 yd ³ /hr	80 m ³ /hr
Output: Piston Side	70 yd ³ /hr	53 m ³ /hr
Pressure: Rod Side	798 psi	55 bar
Pressure: Piston Side	2,233 psi	85 bar
Material Cylinder Diameter	8"	200 mm
Material Cylinder Stroke Length	39"	1000 mm
Max Strokes Per Minute	Piston Side	29
Hydraulic System	Closed Loop	
Hydraulic System Pressure	4,061 psi	280 bar

**DIMENSIONS & WEIGHT**

Length	27' 11"	8.5 m
Width	8'	2.45 m
Height	6' 8"	2.04 m
Total Weight*	17,380 lbs	7,882 kg
*Based on a Ford F600 Chassis		

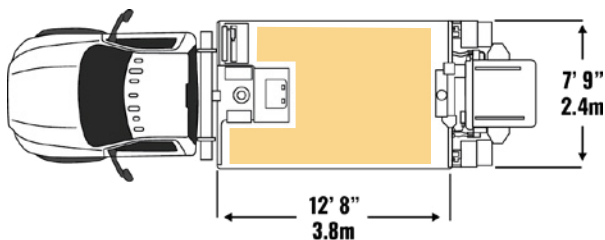
CAPACITIES

Hopper	14 ft ³	400L
Hydraulic Tank	45 Gal	170L
Water Tank	131 Gal	495L
Fuel Tank	56 Gal	211L

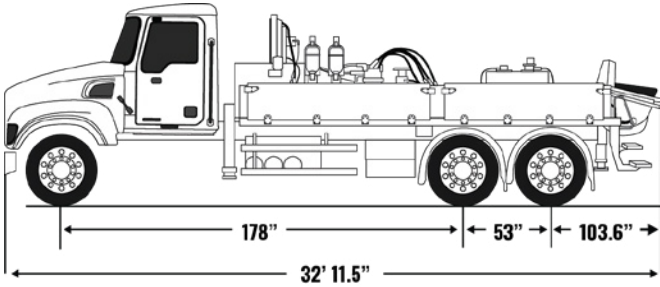
TECHNICAL SPECIFICATIONS

Output: Rod Side	103 yd ³ /hr	78 m ³ /hr
Output: Piston Side	70 yd ³ /hr	53 m ³ /hr
Pressure: Rod Side	1,015 psi	70 bar
Pressure: Piston Side	1,508 psi	70 bar
Material Cylinder Diameter	8"	200 mm
Material Cylinder Stroke Length	47"	1,200 mm
Max Strokes Per Minute	Rod Side	34
	Piston Side	23
Volume Control	Zero to Full	
Outlet	5"	125mm

80.35 FT² OF AVAILABLE BED SPACE.

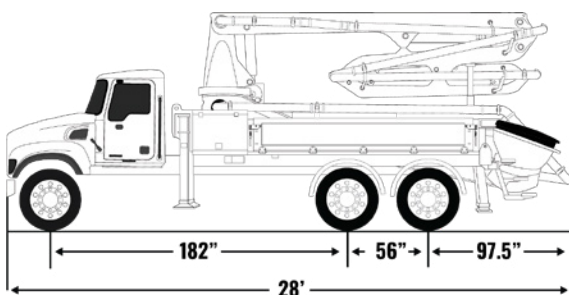


Images and specifications are for reference only and may vary by truck model. DY Corporation may modify specifications without notice. Contact the factory for options.



TECHNICAL SPECIFICATIONS

Output: Rod Side	164 yd ³ /hr	126 m ³ /hr
Output: Piston Side	144 yd ³ /hr	110 m ³ /hr
Pressure: Rod Side	2,205 psi	125 bar
Pressure: Piston Side	3,249 psi	244 bar
Material Cylinder Diameter	8"	200 mm
Material Cylinder Stroke Length	6' 11"	2,100 mm
Max Strokes Per Minute	Rod Side	28
	Piston Side	19
Volume Control	Zero to Full	
Hard-Chromed Material Cylinders	Standard	
Hydraulic System	Closed Loop	
Hydraulic System Pressure	5,075 psi	350 bar
Drive Cylinder Diameter	6.3"	160 mm
Rod Diameter	3.5"	90 mm
Maximum Size Aggregate	2.4"	60 mm

**AXLE WEIGHTS**

	LBS	KG
Front Axle Weight	11,319 lbs	5,134 kg
Rear Axle Weight	33,203 lbs	15,061 kg
Total Weight	44,522 lbs	20,195 kg

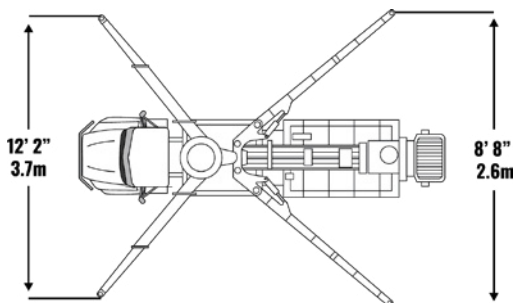
*Based on Western Star 47x 6x4 Chassis

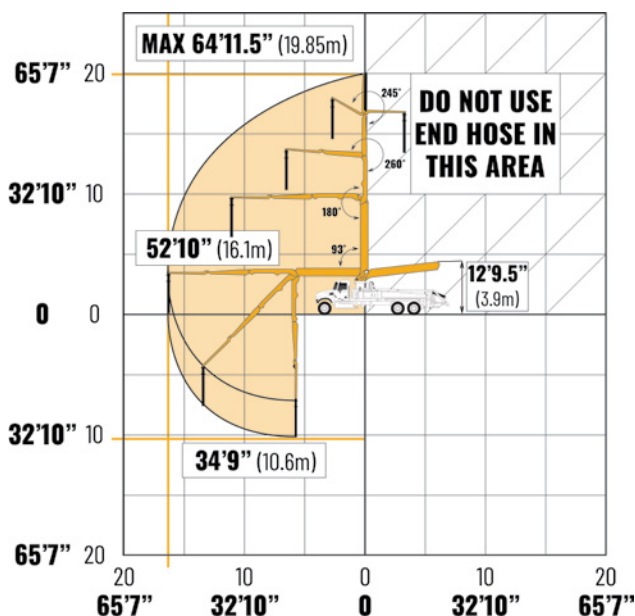
GENERAL SPECIFICATIONS

Pipeline Size (ID) Metric Ends	5"	125m
End Hose Length	9' 10"	3 m
End Hose Diameter	5"	125mm
Outrigger Spread Front: Telescope Out	12' 2"	3.7
Outrigger Spread Rear: Swing Out	8' 8"	2.63m

PUMP SPECIFICATIONS

Output: Rod Side	126 yd ³ /hr	96 m ³ /hr
Output: Piston Side	78 yd ³ /hr	60 m ³ /hr
Pressure: Rod Side	1,123 psi	85 bar
Pressure: Piston Side	1,987 psi	137 bar
Material Cylinder Diameter	8"	200 mm
Max Strokes Per Minute	Rod Side	31
	Piston Side	19
Hydraulic System Pressure	4,713 psi	325 bar
Differential Cylinder Diameter	5"	130mm
Rod Diameter	3"	63 mm
Maximum Size Aggregate	2.4"	60 mm





20X-4ZR

BOOM HEIGHT & REACH

Vertical Reach	64' 11.5"	19.85 m
Horizontal Reach	52' 10"	16.1 m
Reach From Front Of Truck	41' 4"	12.6 m
Reach Depth	34' 9"	10.6 m
Unfolding Height	12' 9.5"	3.9 m

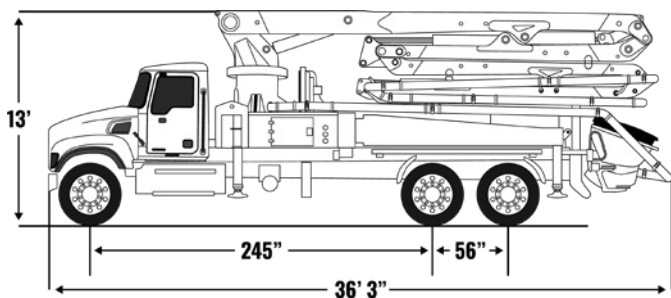
BOOM SECTION

	ARTICULATION	LENGTH	
1st Section	93°	18' 1"	5.5
2nd Section	180°	11' 7"	3.5
3rd Section	260°	11' 7"	3.5
4th Section	245°	12' 1"	3.7

4 section articulation

20X-4ZR

Images and specifications are for reference only and may vary by truck model. DY Corporation may modify specifications without notice. Contact the factory for options.

**AXLE WEIGHTS**

	LBS	KG
Front Axle Weight	16,460 lbs	7,466 kg
Rear Axle Weight	39,360 lbs	17,853 kg
Total Weight	55,820 lbs	25,320 kg

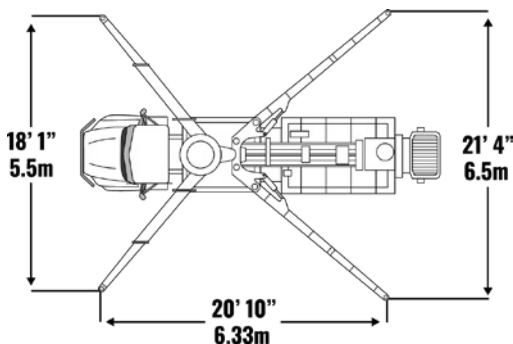
*Based on Western Star 47x 6x4 Chassis

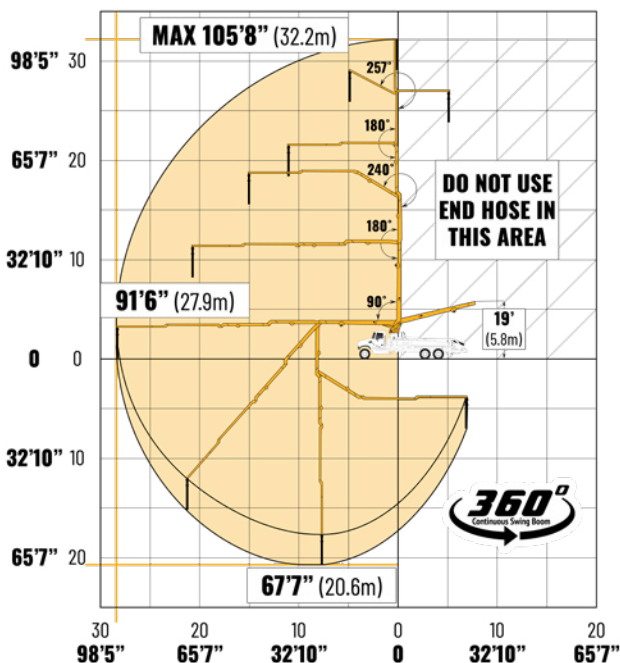
GENERAL SPECIFICATIONS

Water Tank Capacity	132 gallons	500 litres
Pipeline Size (ID) Metric Ends	5"	125 mm
Rotation	360° Continuous	
End Hose Length	11' 6"	3.5 m
End Hose Diameter	5"	125 mm
Outrigger Spread Front: Telescope Out	18' 1"	5.5 m
Outrigger Spread Rear: Swing Out	21' 4"	6.5 m

PUMP SPECIFICATIONS

Output: Rod Side	209 yd ³ /hr	160 m ³ /hr
Output: Piston Side	141 yd ³ /hr	108 m ³ /hr
Pressure: Rod Side	1,232 psi	85 bar
Pressure: Piston Side	1,886 psi	130 bar
Material Cylinder Diameter	9"	230 mm
Max Strokes Per Minute	Rod Side Piston Side	31 21
Hydraulic System Pressure	5,075 psi	350 bar
Differential Cylinder Diameter	5.5"	140 mm
Rod Diameter	3"	80 mm
Maximum Size Aggregate	2.4"	60 mm





BOOM HEIGHT & REACH

Vertical Reach	105' 8"	32.2 m
Horizontal Reach	91' 6"	27.9 m
Reach From Front Of Truck	82' 7"	25.16 m
Reach Depth	67' 7"	20.6 m
Unfolding Height	19'	5.8 m

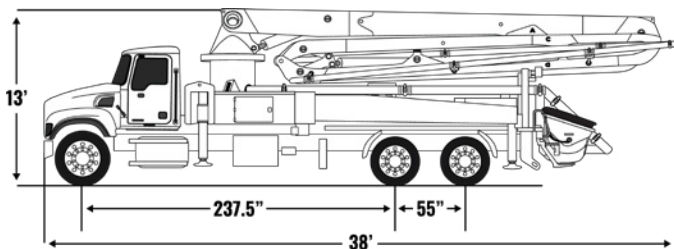
BOOM SECTION

	ARTICULATION	LENGTH	
1st Section	90°	25' 11"	7.9 m
2nd Section	180°	16' 5"	5 m
3rd Section	245°	16' 5"	5 m
4th Section	180°	17' 3"	5.25 m
5th Section	257°	17' 3"	5.25 m

5 section articulation
33X-5ZZ



Images and specifications are for reference only and may vary by truck model. DY Corporation may modify specifications without notice. Contact the factory for options.

**AXLE WEIGHTS**

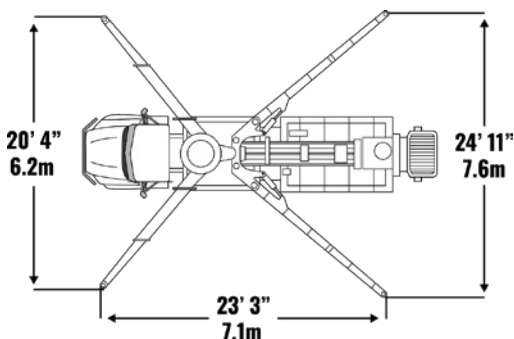
	LBS	KG
Front Axle Weight	17,580 lbs	8,339 kg
Rear Axle Weight	39,460 lbs	17,898 kg
Total Weight	57,040 lbs	25,872 kg
*Based on Western Star 47X 6x4 Chassis		

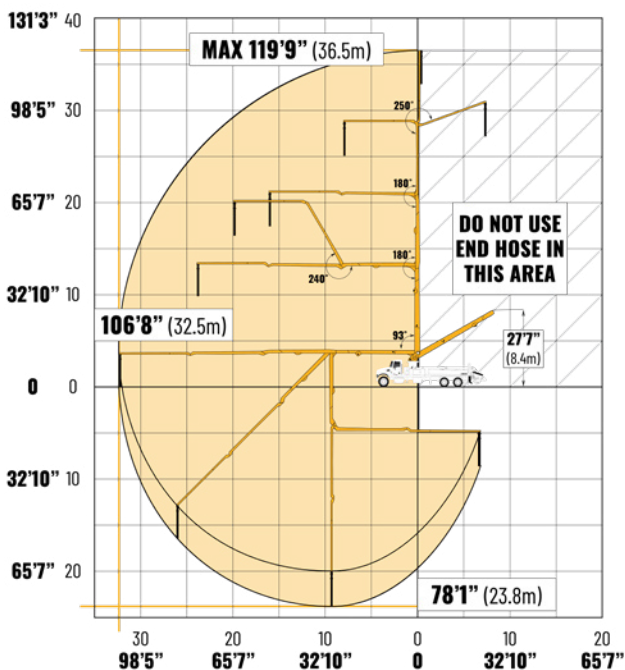
GENERAL SPECIFICATIONS

Water Tank Capacity	132 Gal	500L
Pipeline Size (ID) Metric Ends	5"	125 mm
End Hose Length	11' 6"	3.5 m
End Hose Diameter	5"	125 mm
Outrigger Spread Front: Telescope Out	20' 4"	6.2 m
Outrigger Spread Rear: Swing Out	24' 11"	7.6 m

PUMP SPECIFICATIONS

Output: Rod Side	209 yd ³ /hr	160 m ³ /hr
Output: Piston Side	141 yd ³ /hr	108 m ³ /hr
Pressure: Rod Side	1,262 psi	87 bar
Pressure: Piston Side	1,886 psi	130 bar
Material Cylinder Diameter	9"	230 mm
Max Strokes Per Minute	Rod Side	31
	Piston Side	21
Hydraulic System Pressure	5,075 psi	350 bar
Differential Cylinder Diameter	5.5"	140 mm
Rod Diameter	3"	80 mm
Maximum Size Aggregate	2.4"	60 mm





BOOM HEIGHT & REACH

Vertical Reach	119' 9"	36.5 m
Horizontal Reach	106' 8"	32.5 m
Reach From Front Of Truck	101' 7"	30.96 m
Reach Depth	78' 1"	23.8 m
Unfolding Height	27' 7"	8.4 m

BOOM SECTION

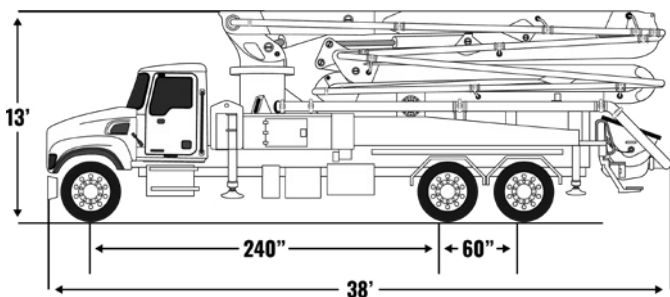
	ARTICULATION	LENGTH	
1st Section	93°	29' 9"	8.9 m
2nd Section	180°	25' 9"	7.85 m
3rd Section	240°	25' 11"	7.9 m
4th Section	250°	25' 9"	7.85 m

4 section articulation

37X-4R



Images and specifications are for reference only and may vary by truck model. DY Corporation may modify specifications without notice. Contact the factory for options.

**AXLE WEIGHTS**

	LBS	KG
Front Axle Weight	18,386 lbs	8,339 kg
Rear Axle Weight	39,484 lbs	17,909 kg
Total Weight	57,870 lbs	26,249 kg

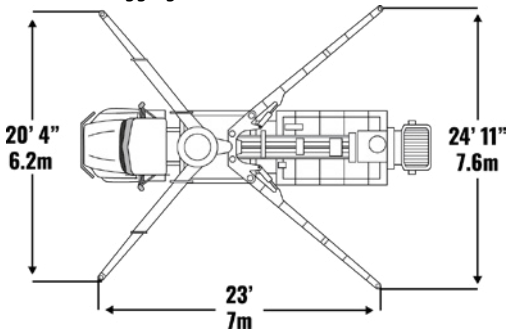
*Based on Western Star 47X 6x4 Chassis

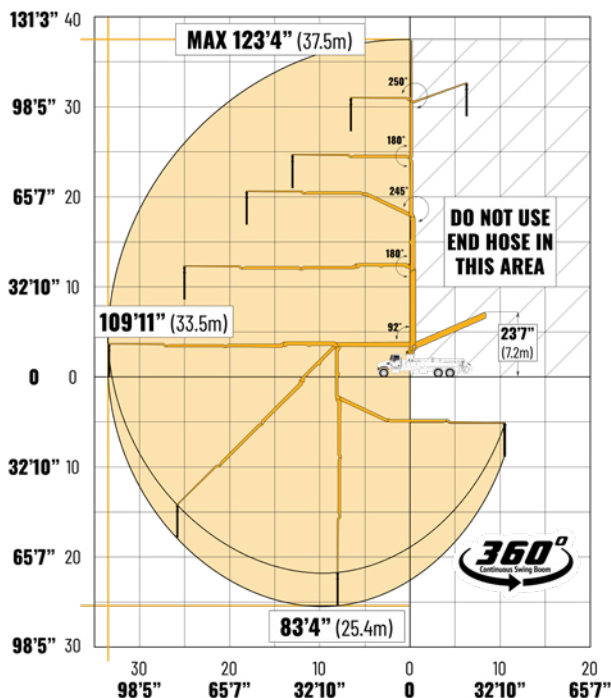
GENERAL SPECIFICATIONS

Water Tank Capacity	132 Gal	500L
Outrigger Fuel Capacity	37 Gal	140L
Pipeline Size (ID) Metric Ends	5"	125 mm
Rotation	360° Continuous	
End Hose Length	11' 6"	3.5 m
End Hose Diameter	5"	125 mm
Outrigger Spread Front: Telescope Out	20' 4"	6.2 m
Outrigger Spread Rear: Swing Out	24' 11"	7.6 m

PUMP SPECIFICATIONS

Output: Rod Side	209 yd ³ /hr	160 m ³ /hr
Output: Piston Side	141 yd ³ /hr	108 m ³ /hr
Pressure: Rod Side	1,232 psi	85 bar
Pressure: Piston Side	1,886 psi	130 bar
Material Cylinder Diameter	9"	230 mm
Max Strokes Per Minute	Rod Side 31 Piston Side 21	
Hydraulic System Pressure	5,075 psi	350 bar
Differential Cylinder Diameter	5.5"	140 mm
Rod Diameter	3"	80 mm
Maximum Size Aggregate	2.4"	60 mm





38X-5ZR

BOOM HEIGHT & REACH

Vertical Reach	123' 4"	37.5 m
Horizontal Reach	109' 11"	33.5 m
Reach From Front Of Truck	97' 5"	29.7 m
Reach Depth	83' 4"	25.4 m
Unfolding Height	23' 7"	7.2 m

BOOM SECTION

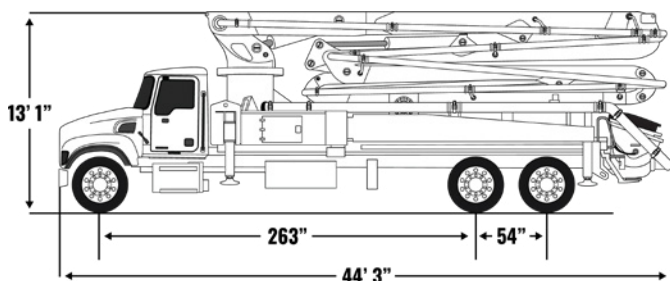
	ARTICULATION	LENGTH
1st Section	92°	27' 3" 8.3 m
2nd Section	180°	20' 6.1 m
3rd Section	245°	20' 6.1 m
4th Section	180°	21' 4" 6.5 m
5th Section	255°	21' 4" 6.5 m

5 section articulation
38X-5ZR



Images and specifications are for reference only and may vary by truck model. DY Corporation may modify specifications without notice. Contact the factory for options.

**FROST LAW COMPLIANT SPECIFICATIONS
NOW AVAILABLE FOR THIS MODEL**

**AXLE WEIGHTS**

	LBS	KG
Front Axle Weight	19,141 lbs	8,682 kg
Rear Axle Weight	41,299 lbs	18,733 kg
Total Weight	60,440 lbs	27,415 kg

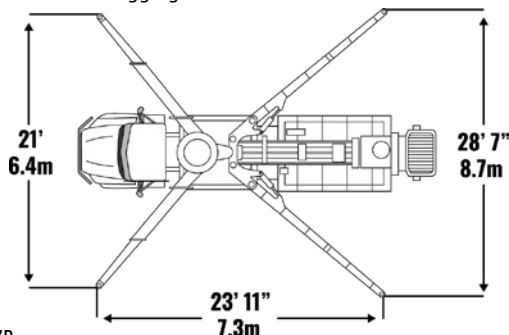
*Based on Western Star 47X 6x4 Chassis

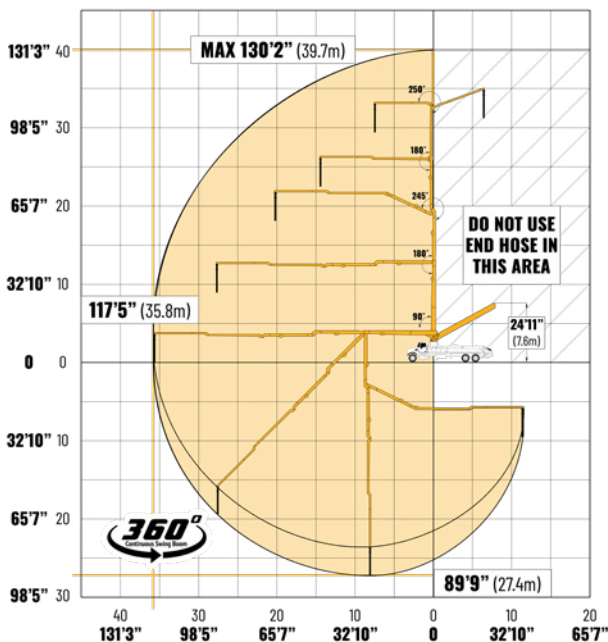
GENERAL SPECIFICATIONS

Water Tank Capacity	132 Gal	500L
Outrigger Fuel Capacity	53 Gal	200L
Pipeline Size (ID) Metric Ends	5"	125 mm
Rotation	360° Continuous	
End Hose Length	11' 6"	3.5 m
End Hose Diameter	5"	125 mm
Outrigger Spread Front: Telescope Out	21'	6.4 m
Outrigger Spread Rear: Swing Out	28' 5"	8.7 m

PUMP SPECIFICATIONS

Output: Rod Side	209 yd ³ /hr	160 m ³ /hr
Output: Piston Side	141 yd ³ /hr	108 m ³ /hr
Pressure: Rod Side	1,232 psi	85 bar
Pressure: Piston Side	1,886 psi	130 bar
Material Cylinder Diameter	9"	230 mm
Max Strokes Per Minute	Rod Side 31 Piston Side 21	
Hydraulic System Pressure	5,075 psi	350 bar
Differential Cylinder Diameter	5.5"	140 mm
Rod Diameter	3"	80 mm
Maximum Size Aggregate	2.4"	60 mm





BOOM HEIGHT & REACH

Vertical Reach	130' 2"	39.7 m
Horizontal Reach	117' 5"	35.8 m
Reach From Front Of Truck	107'	32.6 m
Reach Depth	89' 9"	27.4 m
Unfolding Height	24' 9"	7.6 m

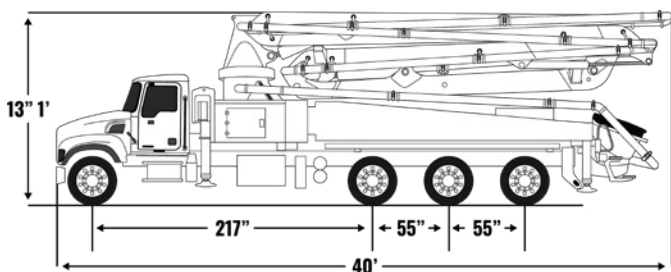
BOOM SECTION

	ARTICULATION	LENGTH
1st Section	90°	27' 7" 8.4 m
2nd Section	180°	22' 6.7 m
3rd Section	245°	22' 6.7 m
4th Section	180°	23' 7 m
5th Section	250°	23' 7 m

5 section articulation
40X-5ZR



Images and specifications are for reference only and may vary by truck model. DY Corporation may modify specifications without notice. Contact the factory for options.

**AXLE WEIGHTS**

	LBS	KG
Front Axle Weight	19,460 lbs	8,827 kg
Rear Axle Weight	51,640 lbs	23,424 kg
Total Weight	71,100 lbs	32,250 kg

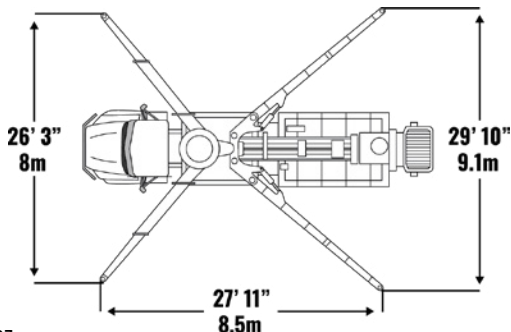
*Based on Western Star 47X 6x4 Chassis

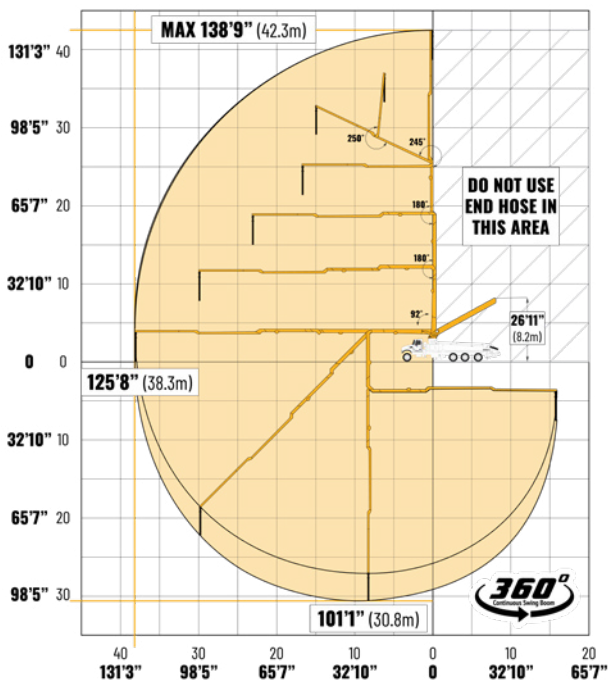
GENERAL SPECIFICATIONS

Water Tank Capacity	211 Gal	800L
Outrigger Fuel Tank Capacity	79 Gal	300L
Pipeline Size (ID) Metric Ends	5"	125 mm
Rotation	360° Continuous	
End Hose Length	11' 6"	3.5 m
End Hose Diameter	5"	125 mm
Outrigger Spread Front: Telescope Out	26' 3"	8 m
Outrigger Spread Rear: Swing Out	29' 10"	9.1 m

PUMP SPECIFICATIONS

Output: Rod Side	209 yd ³ /hr	160 m ³ /hr
Output: Piston Side	141 yd ³ /hr	108 m ³ /hr
Pressure: Rod Side	1,232 psi	85 bar
Pressure: Piston Side	1,886 psi	130 bar
Material Cylinder Diameter	9"	230 mm
Max Strokes Per Minute	Rod Side Piston Side	31 21
Hydraulic System Pressure	5,075 psi	350 bar
Differential Cylinder Diameter	5.5"	140 mm
Rod Diameter	3"	80 mm
Maximum Size Aggregate	2.4"	60 mm





BOOM HEIGHT & REACH

Vertical Reach	138' 9"	42.3 m
Horizontal Reach	125' 8"	38.3 m
Reach From Front Of Truck	120' 7"	36.76 m
Reach Depth	101' 1"	30.8 m
Unfolding Height	26' 11"	8.2 m

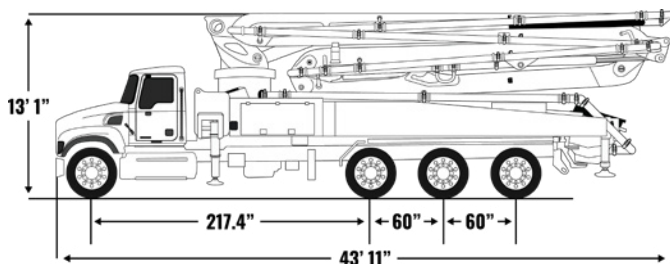
BOOM SECTION

	ARTICULATION	LENGTH
1st Section	92°	25' 7" 7.8 m
2nd Section	180°	22' 4" 6.8 m
3rd Section	180°	23' 7" 7.2 m
4th Section	245°	26' 3" 8 m
5th Section	250°	27' 6" 8.39 m

5 section articulation
43X-5RZ



Images and specifications are for reference only and may vary by truck model. DY Corporation may modify specifications without notice. Contact the factory for options.

**AXLE WEIGHTS**

	LBS	KG
Front Axle Weight	17,863 lbs	8,102 kg
Rear Axle Weight	56,828 lbs	25,777 kg
Total Weight	74,691 lbs	33,879 kg

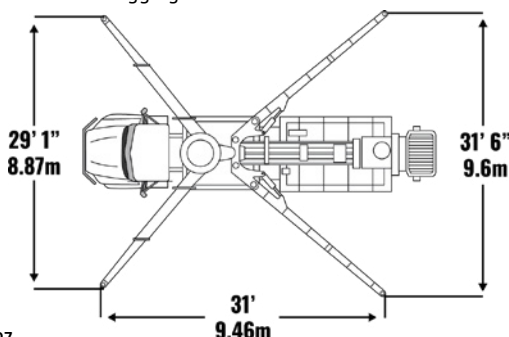
*Based on Mack Granite 8x6 Chassis

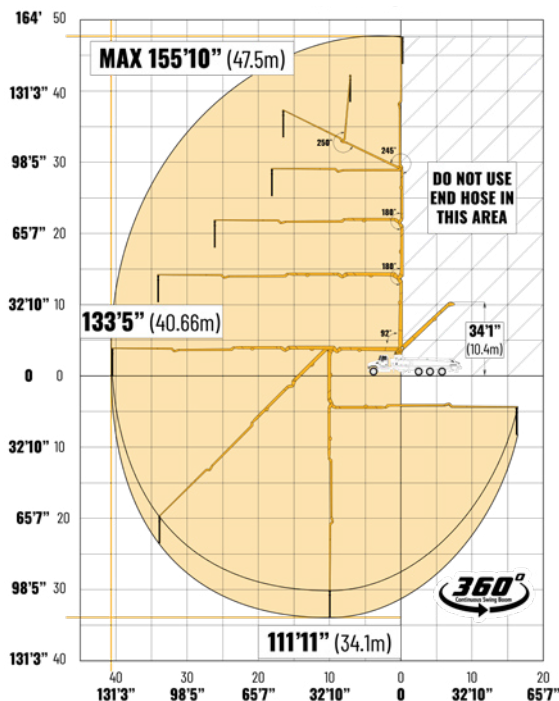
GENERAL SPECIFICATIONS

Water Tank Capacity	211 Gal	800L
Outrigger Fuel Tank Capacity	105 Gal	400L
Pipeline Size (ID) Metric Ends	5"	125 mm
Rotation	360° Continuous	
End Hose Length	11' 6"	3.5 m
End Hose Diameter	5"	125 mm
Outrigger Spread Front: Telescope Out	29' 1"	8.87 m
Outrigger Spread Rear: Swing Out	31' 6"	9.6 m

PUMP SPECIFICATIONS

Output: Rod Side	209 yd ³ /hr	160 m ³ /hr
Output: Piston Side	141 yd ³ /hr	108 m ³ /hr
Pressure: Rod Side	1,232 psi	85 bar
Pressure: Piston Side	1,886 psi	130 bar
Material Cylinder Diameter	9"	230 mm
Max Strokes Per Minute	Rod Side Piston Side	31 21
Hydraulic System Pressure	5,075 psi	350 bar
Differential Cylinder Diameter	5.5"	140 mm
Rod Diameter	3"	80 mm
Maximum Size Aggregate	2.4"	60 mm





BOOM HEIGHT & REACH

Vertical Reach	155' 10"	47.5 m
Horizontal Reach	141' 9"	43.2 m
Reach From Front Of Truck	133' 5"	40.66 m
Reach Depth	111' 11"	34.1 m
Unfolding Height	34' 1"	10.4 m

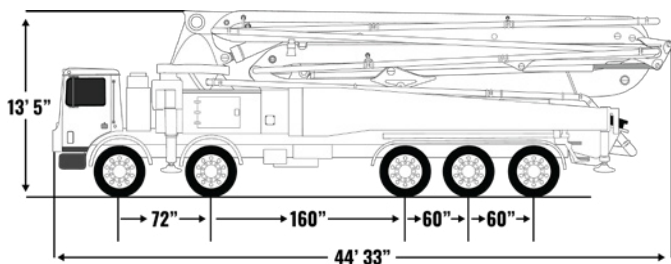
BOOM SECTION

	ARTICULATION	LENGTH
1st Section	92°	31' 2" 9.5 m
2nd Section	180°	25' 7" 7.8 m
3rd Section	180°	25' 3" 7.7 m
4th Section	245°	29' 6" 9 m
5th Section	250°	30' 10" 9.4 m

5 section articulation
48X-5RZ



Images and specifications are for reference only and may vary by truck model. DY Corporation may modify specifications without notice. Contact the factory for options.

**AXLE WEIGHTS**

	LBS	KG
Front Axle Weight	37,522 lbs	17,020 kg
Rear Axle Weight	54,564 lbs	24,720 kg
Total Weight	92,087 lbs	41,770 kg

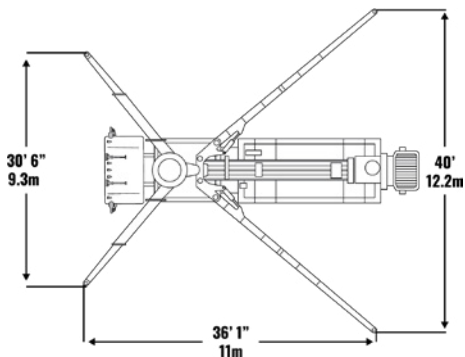
*Based on Mack MR Tandem/Tri Chassis

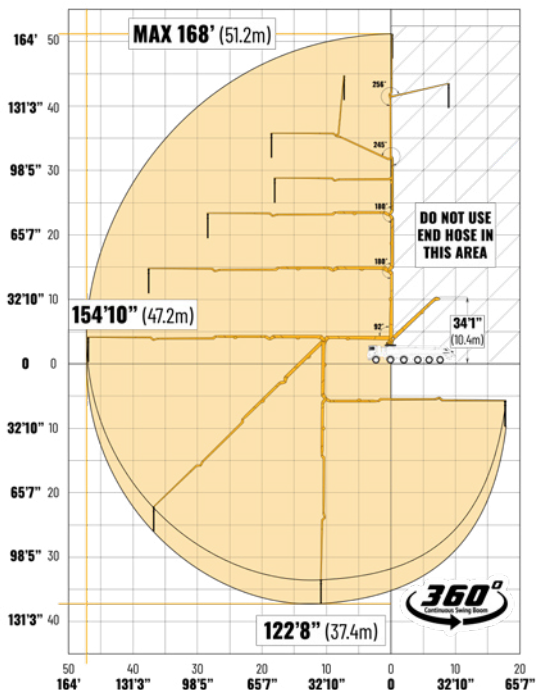
GENERAL SPECIFICATIONS

Water Tank Capacity	211 Gal	800L
Outrigger Fuel Tank Capacity	127 Gal	480L
Pipeline Size (ID) Metric Ends	5"	125 mm
Rotation	360° Continuous	
End Hose Length	11' 6"	3.5 m
End Hose Diameter	5"	125 mm
Outrigger Spread Front: Telescope Out	30' 6"	9.3 m
Outrigger Spread Rear: Swing Out	40'	12.2 m

PUMP SPECIFICATIONS

Output: Rod Side	235 yd ³ /hr	180 m ³ /hr
Output: Piston Side	158 yd ³ /hr	121 m ³ /hr
Pressure: Rod Side	1,232 psi	85 bar
Pressure: Piston Side	1,886 psi	130 bar
Material Cylinder Diameter	9"	230 mm
Max Strokes Per Minute	Rod Side 34 Piston Side 23	
Hydraulic System Pressure	5,075 psi	350 bar
Differential Cylinder Diameter	5.5"	140 mm
Rod Diameter	3"	80 mm
Maximum Size Aggregate	2.4"	60 mm





BOOM HEIGHT & REACH

Vertical Reach	168'	51.2 m
Horizontal Reach	154' 10"	47.2 m
Reach From Front Of Truck	148' 2"	45.16 m
Reach Depth	122' 8"	37.39 m
Unfolding Height	34' 1"	10.4 m

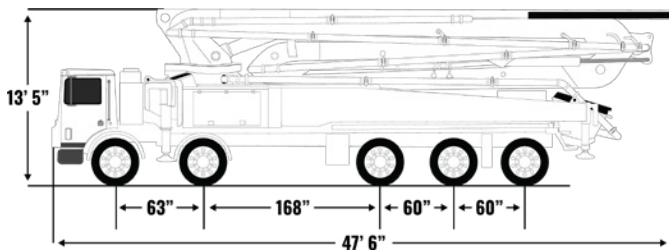
BOOM SECTION

	ARTICULATION	LENGTH
1st Section	92°	33' 6" 10.2 m
2nd Section	180°	29' 8.85 m
3rd Section	180°	28' 8" 8.75 m
4th Section	245°	31' 8" 9.65 m
5th Section	256°	31' 12" 9.75 m

5 section articulation
52X-5RZ



Images and specifications are for reference only and may vary by truck model. DY Corporation may modify specifications without notice. Contact the factory for options.

**AXLE WEIGHTS**

	LBS	KG
Front Axle Weight	36,706 lbs	16,650 kg
Rear Axle Weight	58,841 lbs	26,690 kg
Total Weight	95,504 lbs	43,320 kg

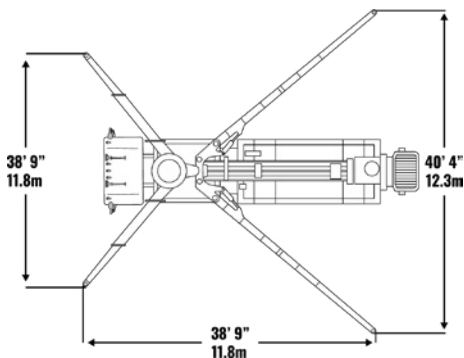
*Based on Mack MR Tandem/Tri Chassis

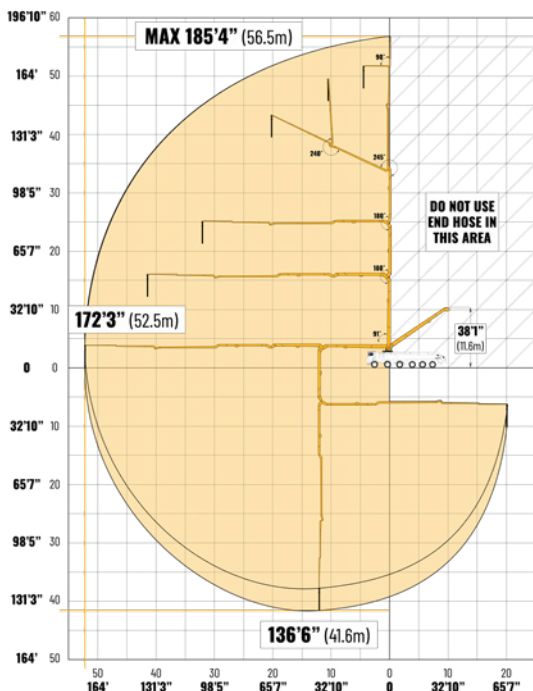
GENERAL SPECIFICATIONS

Water Tank Capacity	211 Gal	800L
Outrigger Fuel Tank Capacity	132 Gal	500L
Pipeline Size (ID) Metric Ends	5"	125 mm
End Hose Length	11' 6"	3.5 m
End Hose Diameter	5"	125 mm
Outrigger Spread Front: Telescope Out	38' 9"	11.8 m
Outrigger Spread Rear: Swing Out	40' 4"	12.3 m

PUMP SPECIFICATIONS

Output: Rod Side	235 yd ³ /hr	180 m ³ /hr
Output: Piston Side	158 yd ³ /hr	121 m ³ /hr
Pressure: Rod Side	1,232 psi	85 bar
Pressure: Piston Side	1,886 psi	130 bar
Material Cylinder Diameter	9"	230 mm
Max Strokes Per Minute	Rod Side 34 Piston Side 23	
Hydraulic System Pressure	5,075 psi	350 bar
Differential Cylinder Diameter	5.5"	140 mm
Rod Diameter	3"	80 mm
Maximum Size Aggregate	2.4"	60 mm





BOOM HEIGHT & REACH

Vertical Reach	185' 4"	56.5 m
Horizontal Reach	172' 3"	52.5 m
Reach From Front Of Truck	165' 7"	50.46 m
Reach Depth	136' 6"	41.6 m
Unfolding Height	38' 1"	11.6 m

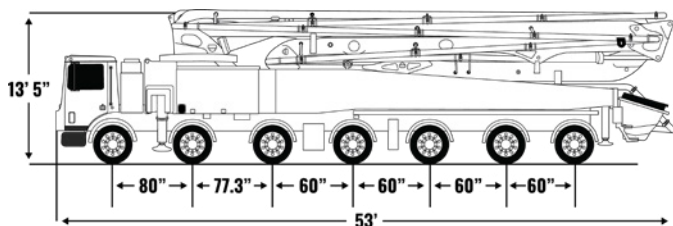
BOOM SECTION

	ARTICULATION	LENGTH	
1st Section	91°	37' 1"	11.3 m
2nd Section	180°	30' 4"	9.25 m
3rd Section	180°	30' 4"	9.25 m
4th Section	245°	36' 1"	11 m
5th Section	240°	22' 8"	6.9 m
6th Section	90°	14' 9"	4.8 m

6 section articulation
57X-6RZ



Images and specifications are for reference only and may vary by truck model. DY Corporation may modify specifications without notice. Contact the factory for options.

**AXLE WEIGHTS**

	LBS	KG
Front Axle Weight	15,830 lbs	7,180 kg
Rear Axle Weight	15,830 lbs	7,180 kg
Total Weight	126,640 lbs	57,443 kg

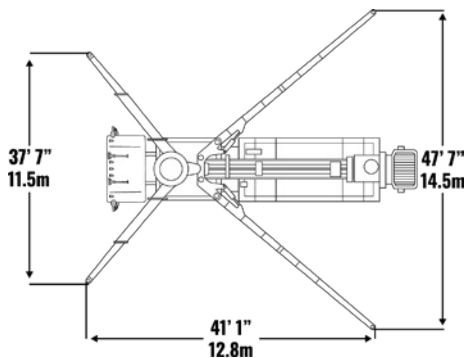
*Based on Mack Terra Pro Chassis

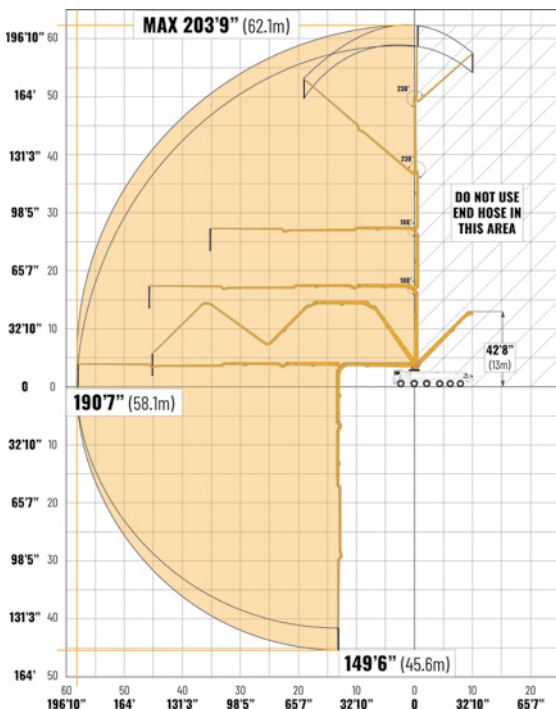
GENERAL SPECIFICATIONS

Water Tank Capacity	132 Gal	500L
Outrigger Fuel Tank Capacity	159 Gal	600L
Pipeline Size (ID) Metric Ends	5"	125 mm
End Hose Length	11' 6"	3.5 m
End Hose Diameter	5"	125 mm
Outrigger Spread Front: Telescope Out	37' 7"	11.5 m
Outrigger Spread Rear: Swing Out	47' 7"	14.5 m

PUMP SPECIFICATIONS

Output: Rod Side	235 yd ³ /hr	180 m ³ /hr
Output: Piston Side	158 yd ³ /hr	121 m ³ /hr
Pressure: Rod Side	1,232 psi	85 bar
Pressure: Piston Side	1,886 psi	130 bar
Material Cylinder Diameter	9"	230 mm
Max Strokes Per Minute	Rod Side	34
	Piston Side	23
Hydraulic System Pressure	5,075 psi	350 bar
Differential Cylinder Diameter	5.5"	140 mm
Rod Diameter	3"	80 mm
Maximum Size Aggregate	2.4"	60 mm





BOOM HEIGHT & REACH

Vertical Reach	203' 9"	62.1 m
Horizontal Reach	190' 7"	58.1 m
Reach From Front Of Truck	183' 11"	56.06 m
Reach Depth	149' 6"	45.6 m
Unfolding Height	42' 8"	13 m

BOOM SECTION

	ARTICULATION	LENGTH
1st Section	91°	41' 12.5 m
2nd Section	180°	33' 5" 10.2 m
3rd Section	180°	33' 1" 10.1 m
4th Section	230°	41' 12.5 m
5th Section	230°	42' 12.8 m

5 section articulation
63X-5RZ

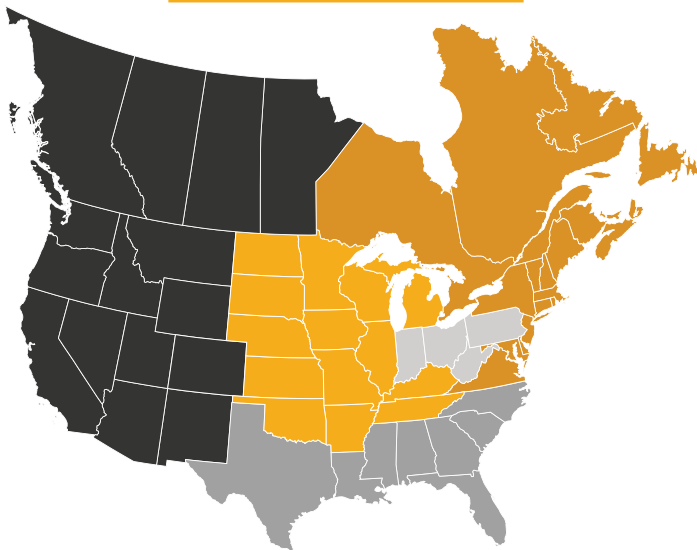


Images and specifications are for reference only and may vary by truck model. DY Corporation may modify specifications without notice. Contact the factory for options.

[illegible]

1-844-397-8677
www.DYConcretePumps.com

REGIONAL SALES MAP



Scan here to find your
local sales representative:



- WESTERN U.S. & CANADA
- MIDWEST/CENTRAL U.S.
- SOUTHERN U.S.
- NORTHEAST U.S. & CANADA
- GREAT LAKES

DALLAS-FORT WORTH TEXAS HEADQUARTERS

4521 CR 616, Alvarado, TX, USA 76009

ALBERTA, CANADA FACILITY

10720-48 ST. SE, Calgary, AB, Canada T2C 3E1

NORTH EASTERN DEALER

1610 Co Rd 200, Dundee, Ohio, USA 44624



**BUILT TO
PERFORM**

1-844-397-8677

www.DYConcretePumps.com