



Concrete Pumps Inc.

PUMP BROCHURE



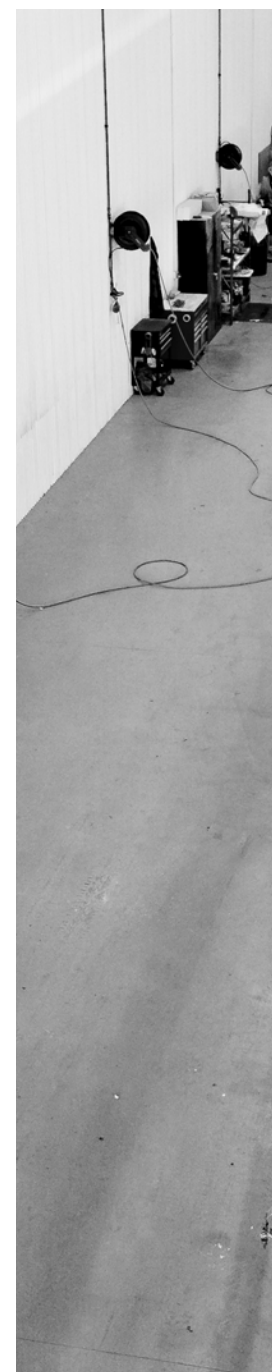
1-844-397-8677

www.DYConcretePumps.com



DYConcretePumps

**BUILT TO
*PERFORM***





CONTENTS

DY CONCRETE PUMPS

02	About DY
06	The DY Difference
59	Meet the Team
64	Locations

PRODUCTS

09	Product Features
11	Boom Configurations
15	2024 Model Line Up
43	Chassis Options

MODEL SPECIFICATIONS

17	CTY-100
20	HP-3250 NEW
21	33X-5ZZ
23	37X-4R
25	38X-5ZR
27	40X-5ZR
29	43X-5RZ
31	48X-5RZ
33	52X-5RZ
35	57X-6RZ
37	63X-5RZ

SERVICES

19	24/7 Customer Service
41	The DY Service Center
48	The DY Parts Department
58	Technical Training



**BUILT TO
PERFORM**

www.DYConcretePumps.com

WHY DY?

It's all about the people!

DY Concrete Pumps is the right choice because we have the right people. In the middle of the day, or in the middle of the night, DY's knowledgeable team of experts is at your disposal.

IMPECCABLE SUPPORT

QUALITY EQUIPMENT

EXPERT TEAM



ABOUT DY

DY Concrete Pumps was established in 1992 and has become a global leader in the concrete pump industry since then. Over the past 30 years, DY Korea has gained a reputation for manufacturing high-quality, dependable concrete pumps for countries around the globe. DY Concrete Pumps North America was born to provide these proven pumps to the North American market at a competitive price with superior support from our US Headquarters and Canadian branch.

DY Concrete Pumps' three locations are conveniently placed to provide quick service to our North American customers no matter the location. Our main office is located in Dallas-Fort Worth, Texas, along with locations in Dundee, Ohio, and Calgary, Alberta, Canada. Our Dallas-Fort Worth Headquarters is equipped with a parts, service, and sales facility ready to meet your needs regardless of where you are on the continent.

**BUILT TO
PERFORM**



33X-5ZZ

CARMAN CONCRETE LTD.

CARMAN, MB, CANADA

"Dealing with DY has been a great pleasure. They truly feel like I'm part of their family every step of the way. The salesman was very knowledgeable and, the service guys definitely give their 100%, and the Parts Department has everything we need with a few jokes in between. It has been an all-round great experience, and we really enjoy the relationship we have built."

-Carl Doell, Owner

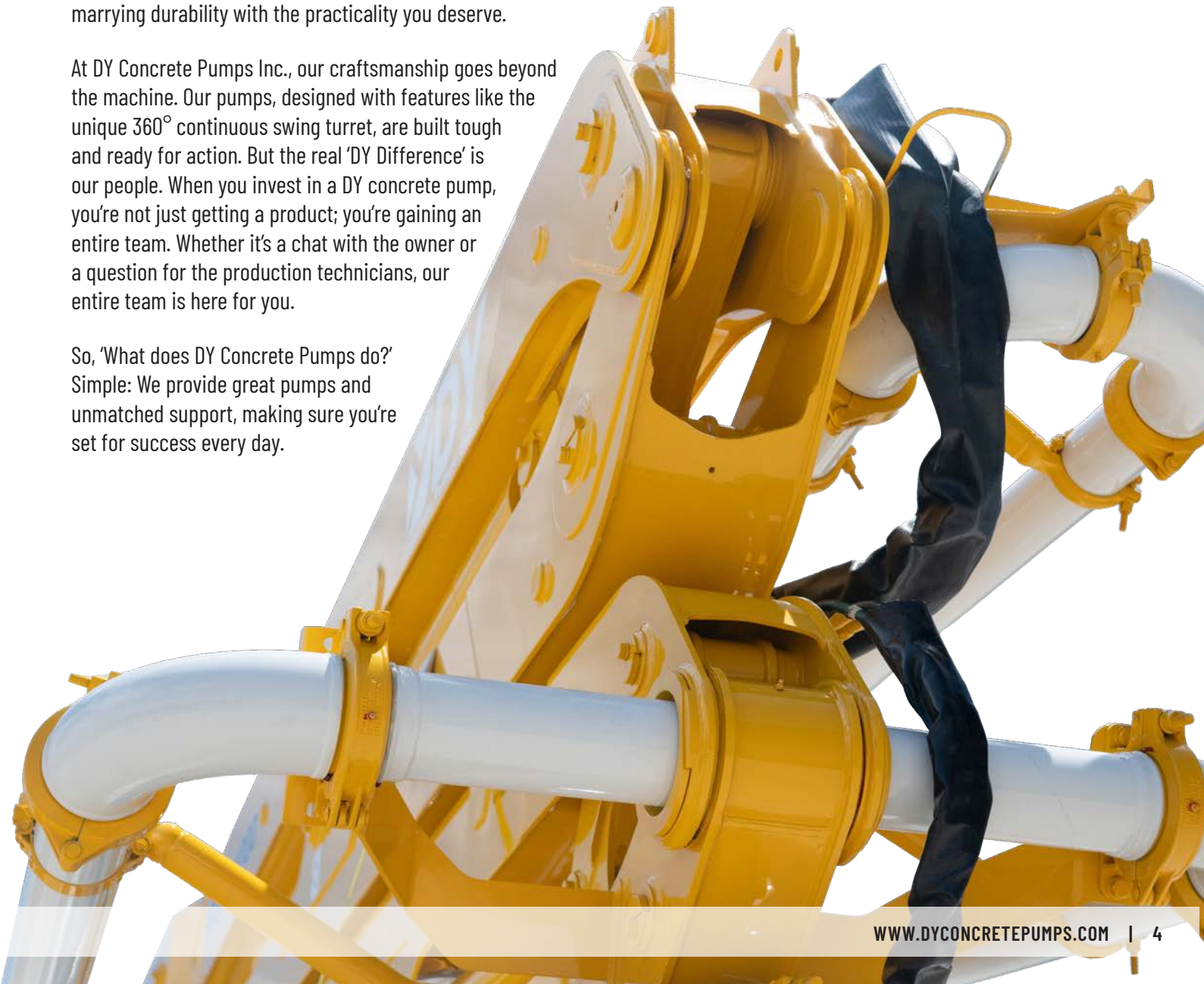


UNMATCHED PERFORMANCE, DESIGNED BY OPERATORS FOR OPERATORS

DY Concrete Pumps is your trusted partner for the concrete pump owner who demands equipment that's truly 'Built To Perform.' With our foundation grounded in the expertise of a seasoned operator, we offer machines designed by operators for operators – marrying durability with the practicality you deserve.

At DY Concrete Pumps Inc., our craftsmanship goes beyond the machine. Our pumps, designed with features like the unique 360° continuous swing turret, are built tough and ready for action. But the real 'DY Difference' is our people. When you invest in a DY concrete pump, you're not just getting a product; you're gaining an entire team. Whether it's a chat with the owner or a question for the production technicians, our entire team is here for you.

So, 'What does DY Concrete Pumps do?'
Simple: We provide great pumps and unmatched support, making sure you're set for success every day.



CONCRETE PUMPS

Streamline your concrete placement process with DY's superior boom and line pumps. Built using high quality components, our pumps deliver unmatched performance, living up to our 'Built To Perform' motto. From intricate pours to everyday tasks, trust our machinery to accelerate operations and prioritize worker safety.

Designed with operators in mind, DY Concrete Pumps offer consistent reliability. Whether you're a seasoned veteran or just starting, our machines ensure hassle-free operations, letting you focus on delivering quality work every time.



Features include:

- ▶ *Easy-To-Clean Hoppers*
- ▶ *360° Continuous Rotating Boom*
- ▶ *Emergency Electrical Bypass Switches*
- ▶ *Fully Customizable HBC or Autec Remote Options*
- ▶ *German-Engineered and German-Made Rexroth Hydraulic Pumps*
- ▶ *24/7 Technical Support and After-Sales Service*

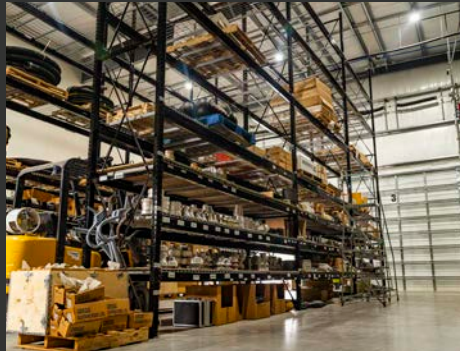
SERVICES



24/7 SUPPORT

At DY Concrete Pumps, we stand by you through the entire journey of your pump, from the initial purchase to maintenance and eventually to resale. Our commitment spans across North America, ensuring you have access to the industry's best concrete boom and line pumps.

Our promise doesn't end with the sale. We stock an extensive range of parts, readily available for same or next-day delivery.



PARTS

Beyond parts, our dedicated concrete pump service center, coupled with our expert traveling technicians, stands ready. They're here 24/7 to support and assist you, wherever and whenever needed.

At DY, a knowledgeable team member is always on standby, ready to answer your questions and guide you through the process.



SERVICE CENTER



THE DY DIFFERENCE

Setting a new standard in the concrete pumping industry.

What sets us apart is not just our high-quality, reliable machines that are assembled and tested at our North American Headquarters, but also our unwavering commitment to customer service. Our machines are engineered with the operator in mind for simplicity and efficiency, ensuring they are Built to Perform.

The true essence of the DY Difference lies in the people behind our products.

Our team is the heartbeat of DY Concrete Pumps. Comprising of experts from different aspects of concrete pumping, our team extends from skilled technicians responsible for crafting these machines to our dedicated service professionals and knowledgeable parts department staff. Many of our team members have hands-on experience in the field, giving them unique insights into your needs.

Emergencies don't wait, and neither do we.

Our 24/7 hotline ensures you're never alone when you need assistance, especially in the middle of the night or early morning. With DY, you're not just investing in a machine; you're gaining access to a network of professionals ready to support your success.

Experience the DY Difference – where quality, reliability, and exceptional service come together to redefine your concrete pumping experience.



CTY-100

JAGUAR CONCRETE PUMPING
ORANGE PARK, FL, USA

40X-5ZR

TROYER CONCRETE PUMPING
MIDFORD, NE, USA





**BUILT TO
PERFORM**

PRODUCT FEATURES

1



1. 360° Continuous Swing

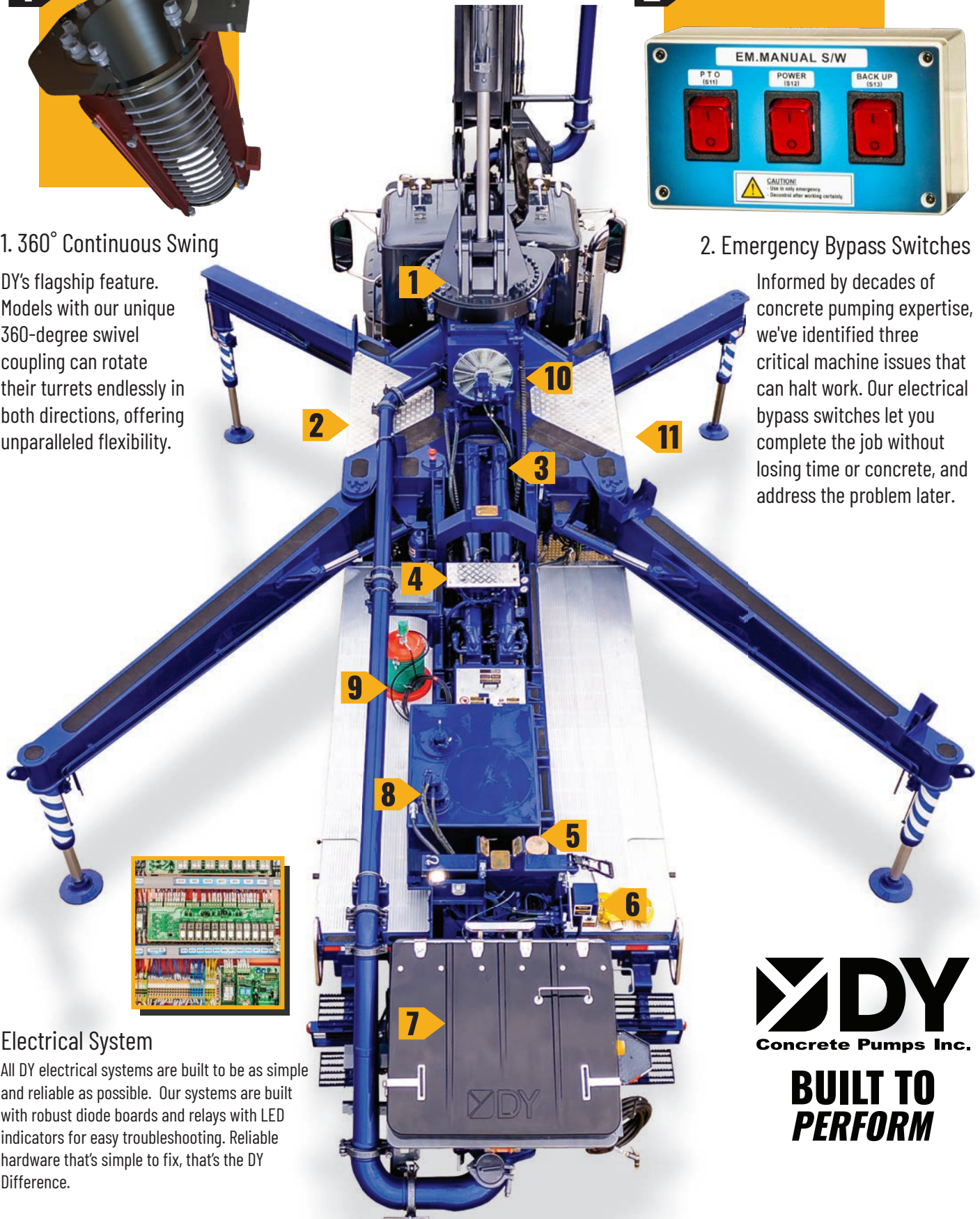
DY's flagship feature. Models with our unique 360-degree swivel coupling can rotate their turrets endlessly in both directions, offering unparalleled flexibility.

2



2. Emergency Bypass Switches

Informed by decades of concrete pumping expertise, we've identified three critical machine issues that can halt work. Our electrical bypass switches let you complete the job without losing time or concrete, and address the problem later.

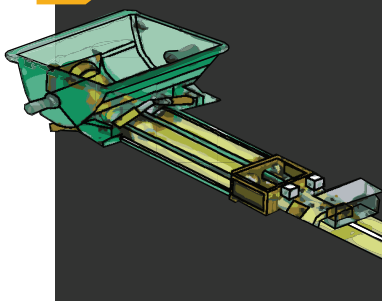


Electrical System

All DY electrical systems are built to be as simple and reliable as possible. Our systems are built with robust diode boards and relays with LED indicators for easy troubleshooting. Reliable hardware that's simple to fix, that's the DY Difference.

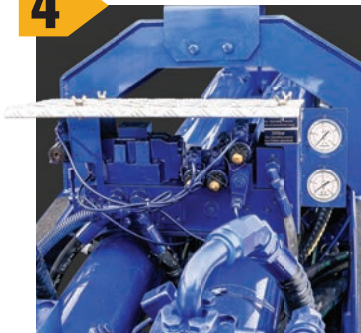
DY
Concrete Pumps Inc.

**BUILT TO
PERFORM**

3

3. Long Stroke, Closed Loop Hydraulics

Our long stroke pumping ensures a high volume output with a consistent and smooth flow at all pressure levels.

4

4. Electronically Controlled Hydraulic Valves

Smooth pump operation with electronically controlled valves, offering full manual overrides and fewer parts for low maintenance.

5

5. Automatic Greasing

Automatic electric hopper greasing system for hassle-free maintenance. Boom greasing systems are also standard on models 43X-5RZ and above.

6

6. Rear Remote Panel

The rear position of the switch box provides easy access for operators to fully control the machine when needed.

7

7. Hopper

Designed for ease of filling and cleaning, our hopper includes industry standard safety features and interrupt switches.

8

8. Water Pump

High-pressure, hydraulic-driven centrifugal pump enables quick and efficient washouts.

9

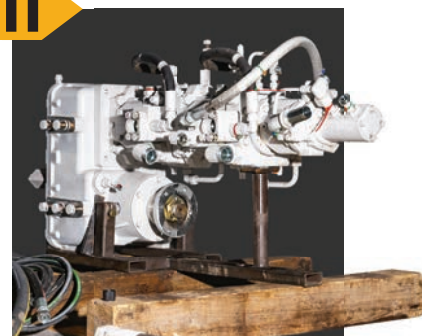
9. Air Grease Pump

Standard on all models, this air-operated grease pump allows for easy manual greasing.

10

10. Oil Cooler

High capacity oil cooler designed for sustained hydraulic performance in any climate.

11

11. Hydraulic Pump

Delivers exceptional performance, backed by the reliability of German Rexroth pump technology.

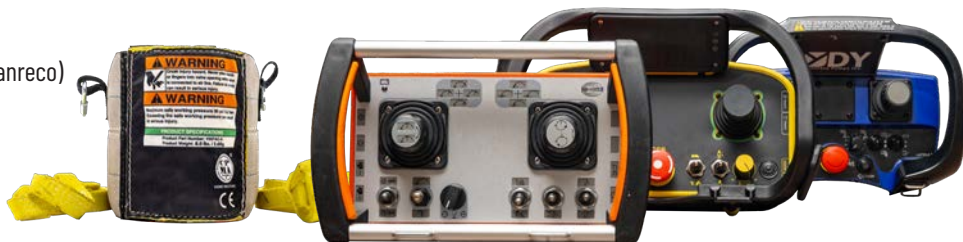
OPTIONS

Every operator is different, so every pump is too.

DY offers a range of available options to build your machine exactly how you like it.

Available options:

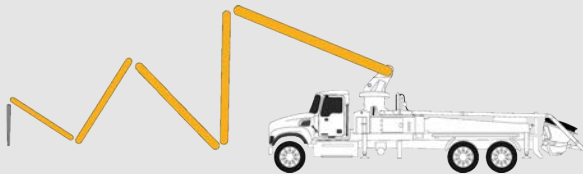
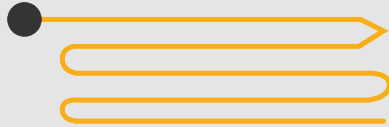
- Multiple Styles of Remotes (HBC, Autec, & Scanreco)
- Air-Cuffs and Upgraded Air Compressors
- Tool and Equipment Storage
- Unlimited Paint and Vinyl
- Custom Builds Upon Request



BOOM TYPE CONFIGURATIONS

DY Concrete Pumps has four distinct boom configurations to cater to various construction needs, providing operators with the necessary tools at their disposal. Whether you're looking for enhanced maneuverability in tight spaces, a straightforward option for an array job site condition, versatility for intricate placements, or increased articulation, our lineup ensures you have the right equipment for your concrete pumping needs.

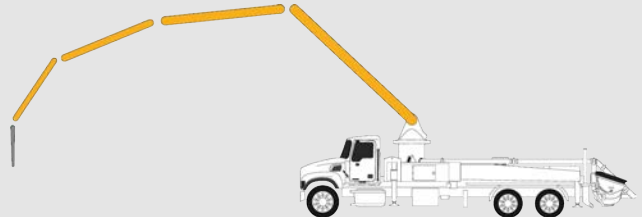
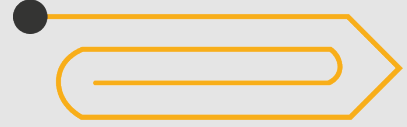
ZZ



AVAILABLE MODEL: 33X-5ZZ

This ZZ Boom configuration features sections that fold directly on top of each other, much like an accordion. It is designed to provide the lowest possible unfolding height. It excels in situations where low working heights are crucial, allowing for unmatched maneuverability in confined spaces such as buildings.

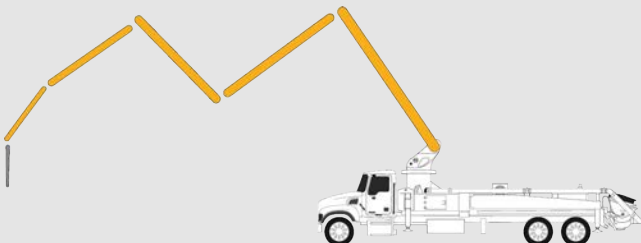
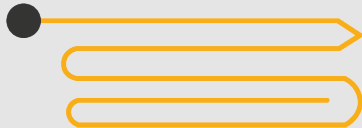
R



AVAILABLE MODEL: 37X-4R

Renowned for its simplicity and ease of operation, the R Boom configuration is a reliable choice for a wide range of job site conditions. This configuration utilizes a tried-and-true design with four sections that roll and fold. Operators appreciate its straightforward and versatile controls.

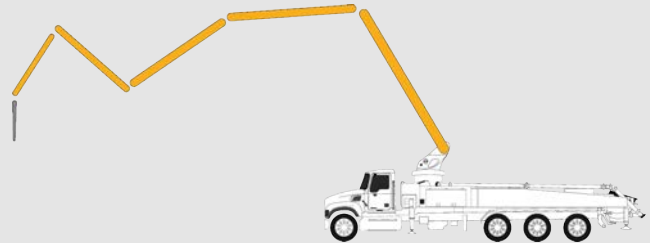
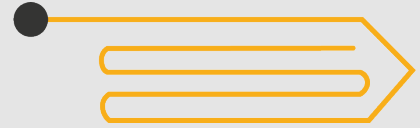
ZR



AVAILABLE MODELS: 38X-5ZR, 40X-5ZR

The ZR configuration is an adaptation of the Z boom, incorporating the advantages of a True Z design with a remarkable 250-degree articulation in the rolling tip section. This feature enhances versatility and maneuverability, making it suitable for a wide spectrum of concrete placement tasks.

RZ



AVAILABLE MODELS: 43X-5RZ, 48X-5RZ, 52X-5RZ, 57X-6RZ, 63X-5RZ

Offering remarkable versatility, the RZ Boom configuration design allows operators to position the boom for tasks ranging from large volume pours to intricate placements. This flexibility makes it an ideal choice for various concrete placement scenarios, adapting easily to changing job requirements.

CTY-100

MILLER CONCRETE PUMPING
SARASOTA, FL, USA

"We have found DY pumps to be extremely durable, smooth, and user-friendly. DY also provides top-notch customer support along with an outstanding parts department. DY has proven to be an outstanding company with high expectations for pumping equipment. With great feedback from both our customers and operators, Miller Concrete Pumping can confidently recommend DY Concrete Pumps."

-Eric Miller, Owner



40X-5ZR

DOUBLE DIAMOND CONCRETE PUMPING
CHARLESTON, SC, USA





CTY-100



ROD SIDE OUTPUT: 103 yd³/hr / 78 m³/hr
 ROD SIDE PRESSURE: 1015 PSI / 70 BAR
 WATER TANK CAPACITY: 131 GAL / 495L
 HOPPER CAPACITY: 14.1 FT³ / 5.8 m

33X-5ZZ



VERTICAL REACH: 105' 7" / 32.3 m
 HORIZONTAL REACH: 91' 6" / 27.9 m
 UNFOLDING HEIGHT: 19' / 5.8 m
 WATER TANK CAPACITY: 132 GAL/500 L



37X-4R



VERTICAL REACH: 119' 9" / 36.5 m
 HORIZONTAL REACH: 106' 8" / 32.5 m
 UNFOLDING HEIGHT: 27' 7" / 8.4 m
 WATER TANK: 132 GAL / 500L

38X-5ZR



VERTICAL REACH: 123' 4" / 37.5 m
 HORIZONTAL REACH: 109' 11" / 33.5 m
 UNFOLDING HEIGHT: 23' 7" / 7.2 m
 WATER TANK CAPACITY: 132 GAL / 500L



40X-5ZR

VERTICAL REACH: 130' 2" / 39.7 m
 HORIZONTAL REACH: 117' 5" / 35.8 m
 UNFOLDING HEIGHT: 24' 9" / 7.6 m
 WATER TANK CAPACITY: 132 GAL / 500 L





43X-5RZ

VERTICAL REACH: 138' 9" / 42.3 m
HORIZONTAL REACH: 125' 8" / 38.3 m
UNFOLDING HEIGHT: 26' 11" / 8.2 m
WATER TANK CAPACITY: 211 GAL / 800L

48X-5RZ



VERTICAL REACH: 155' 10" / 47.5 m
HORIZONTAL REACH: 141' 9" / 43.2 m
UNFOLDING HEIGHT: 34' 1" / 10.4 m
OUTRIGGER FUEL TANK CAPACITY: 105 GAL/400L



52X-5RZ

VERTICAL REACH: 167' 11" / 47.5 m
HORIZONTAL REACH: 154' 10" / 43.2 m
UNFOLDING HEIGHT: 34' 1" / 10.4 m
OUTRIGGER FUEL TANK CAPACITY: 126 GAL/480L

57X-6RZ

VERTICAL REACH: 185' 4" / 56.6 m
HORIZONTAL REACH: 172' 3" / 52.5 m
UNFOLDING HEIGHT: 38' 1" / 11.6 m
OUTRIGGER FUEL TANK CAPACITY: 132 GAL/ 500L



63X-5RZ

VERTICAL REACH: 203' 7" / 62.1 m
HORIZONTAL REACH: 189' 3" / 56.06 m
UNFOLDING HEIGHT: 42' 7" / 13 m
OUTRIGGER FUEL TANK CAPACITY: 158 GAL/600L

TRUCK MOUNTED LINE PUMP CTY-100



The CTY-100 is a versatile truck-mounted line pump, efficiently designed to simplify your concrete pumping needs. Built on a medium-duty truck chassis, it brings the convenience of operation without the requirement of a commercial driver's license (CDL), making it accessible and user-friendly for a wide range of construction projects. The CTY 100's flatbed design not only allows for exceptional maneuverability but also provides convenient deck space for storing hoses and other accessories for more efficient concrete pumping.



FEATURES

Commercial Driver's License (CDL) not required to operate

Hopper Capacity: 400L

Water Tank Size: 45 Gal

Fuel Tank: 56 Gal

Available Bed Space: 80.35 ft²

Flatbed mounted for ultimate flexibility

Rod Side Output: 103 yd³/hr

Outlet: 5" HD

CTY-100

SPECIFICATIONS

DIMENSIONS & WEIGHT

Weight	17,380 lbs	7,882 kg
Length	27' 11"	8.5 m
Width	8' 5"	2.45 m
Height	6' 8"	2.04 m

CAPACITIES

Hopper	14.1 ft ³	400L
Hydraulic Tank	45 Gal	170L
Water Tank	131 Gal	495L
Fuel Tank	56 Gal	211L

CHASSIS SPECIFICATIONS

Chassis Options	Ford	F600
	Chevrolet	5500HD
	RAM	5500
Max GVWR	19,500 lbs	8,845 kg

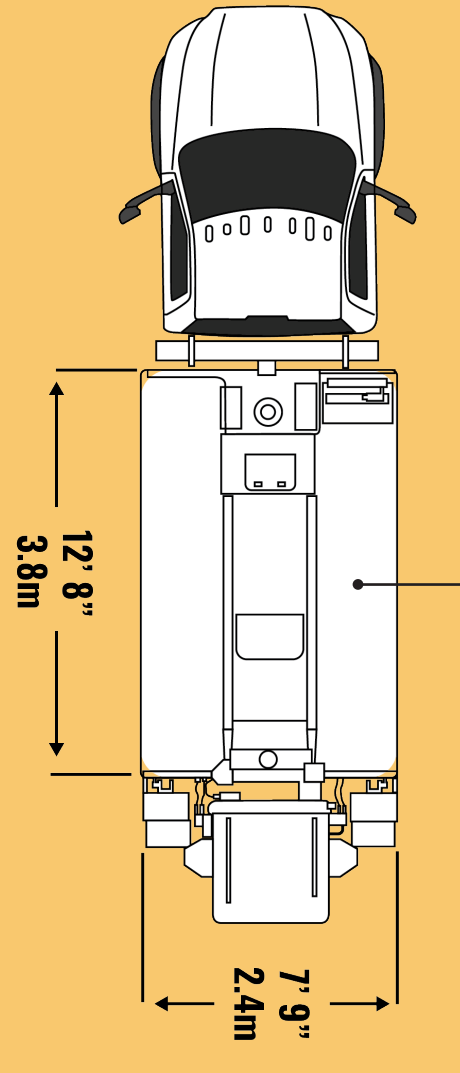
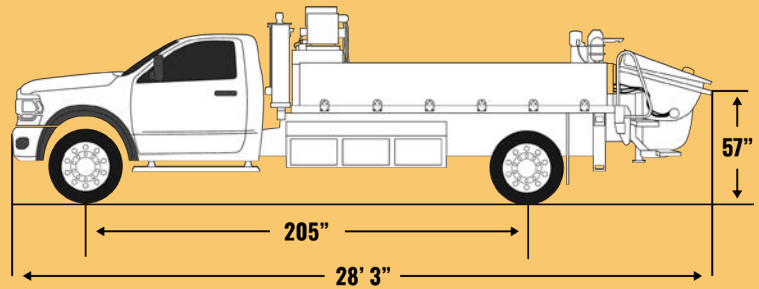
TECHNICAL SPECIFICATIONS

Output: Rod Side	103 yd ³ /hr	78 m ³ /hr
Output: Piston Side	70 yd ³ /hr	53 m ³ /hr
Pressure: Rod Side	1,015 psi	70 bar
Pressure: Piston Side	1,508 psi	104 bar
Material Cylinder Diameter	8"	200 mm
Material Cylinder Stroke Length	47"	1,200 mm
Max Strokes Per Minute	Rod Side	34
	Piston Side	23
Volume Control	Zero - Full	
Outlet	5"	125mm



This product specification could be changed by DY Corporation without notice to improve the quality.

DIMENSIONS



80.35 FT²
OF AVAILABLE
BED SPACE.



scan here for
more information
about this pump!

Photos and drawings are for illustrative purposes only.
Dimensions will vary with different truck makes, models, and specifications.
For available options, please contact the factory.



24/7

48X-5RZ
KELLER CONCRETE PUMPING
SARASOTA, FL, USA

CUSTOMER SUPPORT

ACROSS NORTH AMERICA, YOU CAN COUNT ON DY
CONCRETE PUMPS' CUSTOMER SUPPORT.

We know time is precious, and nothing is more critical
than continual on-site support. DY Concrete Pumps
guarantees quick responses and immediate solutions.

DY Concrete Pumps starts with quality manufacturing
for every unit and backs it up with:

- ▶ *Over the Phone Technical Support*
- ▶ *Complete Start-Up Assistance*
- ▶ *Overnight DY Replacement Parts*
- ▶ *Regional Field Service Personnel*

**DY CONCRETE PUMPS
CUSTOMER SUPPORT NUMBER:**

1-844-397-9677

Call today!



Concrete Pumps Inc.

**BUILT TO
PERFORM**

**NEW FOR 2024
NOW ACCEPTING
ORDERS**

DUAL PRESSURE SYSTEM

Easily swap between high and low pressures without changing hydraulic lines. Simply pull a level to change between the two.

AVAILABLE ON

500+ HP Mack, Western Star, and Freightliner Chassis.

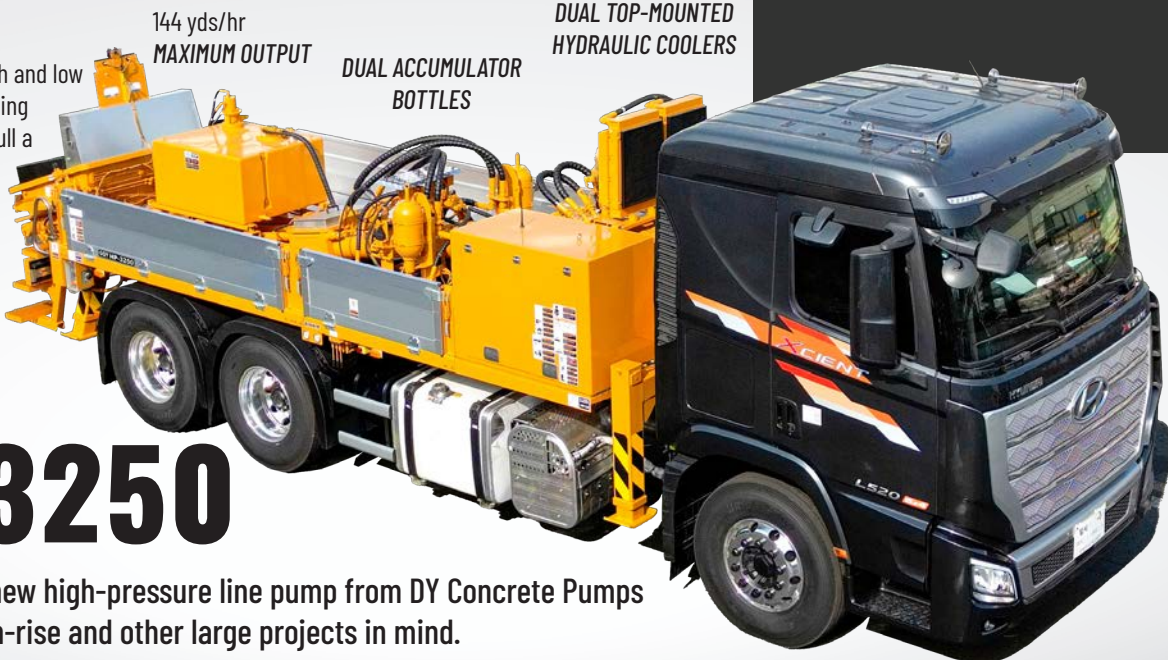
144 yds/hr
MAXIMUM OUTPUT

DUAL ACCUMULATOR
BOTTLES

DUAL TOP-MOUNTED
HYDRAULIC COOLERS

HP-3250

The HP-3250 is a new high-pressure line pump from DY Concrete Pumps designed with high-rise and other large projects in mind.



Introducing the HP-3250:

Engineered for Exceptional Performance.

With an impressive output of 144 yards per hour, this high-pressure line pump is tailor-made for high-rise construction projects. Equipped with dual hydraulic coolers, it ensures optimal performance even in challenging conditions. The HP-3250 stands out as the most versatile high-pressure line pump in the industry and is able to switch effortlessly between high- and low-pressure pumping. That's the DY Difference.



HP-3250 SPECS

Output	rod side	110 m ³ /hr1	44 yd ³ /hr
	piston side	96 m ³ /hr1	26 yd ³ /hr
Pressure	rod side	152 bar2	,205 psi
	piston side	224 bar	3,249 psi
Material cylinder diameter		200 mm	8 "
Stroke length		2,100 mm	6' 11"
Max strokes	per minute	1 minute	
	rod side	28	
	piston side	19	
Volume control		Zero to full	
Vibrator Standard		Option	
Hard-chromed material cylinders		Standard	
Hydraulic system		Closed-loop	
Hydraulic system pressure		350 bar5	,075 psi
Drive cylinder diameter		160 mm	6.3 "
Rod diameter		90 mm3	.5 "
Maximum size aggregate		60 mm2	.4 "

This product specification could be changed by DY Corporation without notice to improve the quality. Dimensions will vary with different truck makes, models, and specifications.

CONTACT

For more pictures, further inquiries, or any other questions, please directly contact your regional salesperson or call our sales office. Meet The Team is located on page 59.

4521 CR 616, Alvarado, TX 76009

1-844-397-8677

DYConcretePumps.com

TRUCK MOUNTED CONCRETE BOOM PUMP

33X-5ZZ



The compact, yet powerful, 33X-5ZZ is a reliable staple in the DY lineup. Sporting a Double Z boom configuration, it is one of DY's smaller boom pumps, making it ideal for a wide range of construction sites. With smooth controls and an unfolding height just below 19 feet, this concrete pump excels in navigating confined spaces, working under low ceilings, and handling projects beneath bridge decks and overhead obstacles. Designed with a 360-degree continuous swing and a five-section true-Double Z boom, it delivers versatility and precision you can count on for your concrete pumping needs.

FEATURES

Unfolding Height: 18' 8"

Water Tank Capacity: 132 Gal

Zero to Full Volume Control

Closed Loop Hydraulic System

Hard-Chromed Material Cylinders

Hopper Vibrator

Rod Side Output: 209 yd³/hr

360° Continuous Swing Turret



33X-5ZZ

SPECIFICATIONS

AXLE WEIGHTS	LBS	KG
Front Axle Weight	16,000 lbs	7,257 kg
Rear Axle Weight	36,500 lbs	16,556 kg
Total Weight *Based on Mack MR Chassis	52,500 lbs	23,812 kg

BOOM HEIGHT & REACH

Vertical Reach	105' 7"	32.2 m
Horizontal Reach	91' 6"	27.9 m
Reach From Front Of Truck	82' 7"	25.16 m
Reach Depth	67' 7"	20.6 m
Unfolding Height	18' 8"	5.8 m

BOOM SECTION ARTICULATION

1st Section Articulation	90°
2nd Section Articulation	180°
3rd Section Articulation	245°
4th Section Articulation	180°
5th Section Articulation	255°

BOOM SECTION LENGTHS

1st Section Length	25' 11"	7.9 m
2nd Section Length	16' 5"	5 m
3rd Section Length	16' 5"	5 m
4th Section Length	17' 3"	5.25 m
5th Section Length	17' 3"	5.25 m

GENERAL SPECIFICATIONS

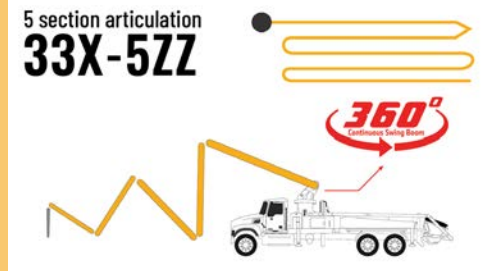
Water Tank Capacity	132 gallons	500 litres
Pipeline Size (ID) Metric Ends	5"	125 mm
Rotation	360°	Continuous
End Hose Length	11' 6"	3.5 m
End Hose Diameter	5"	125 mm
Outrigger Spread Front: Telescope Out	18' 1"	5.5 m
Outrigger Spread Rear: Swing Out	21' 4"	6.5 m

PUMP SPECIFICATIONS

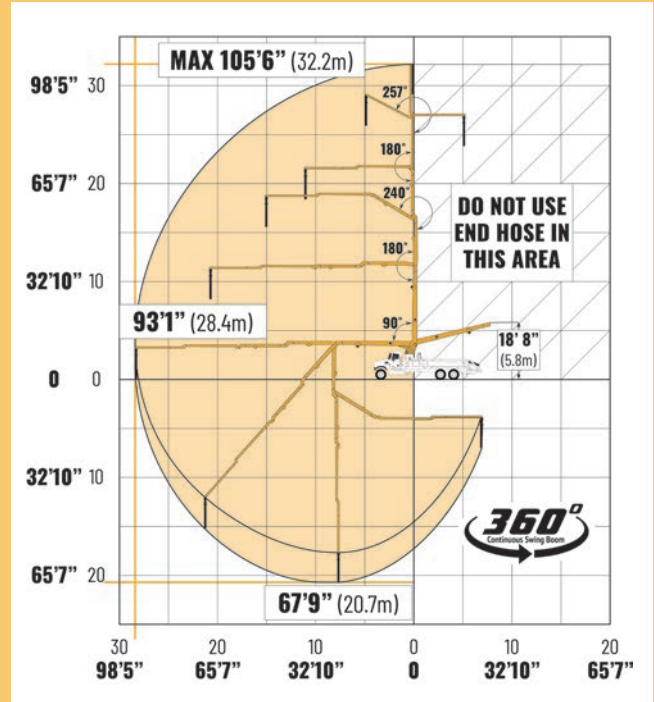
Output: Rod Side	209 yd³/hr	160 m³/hr
Output: Piston Side	141 yd³/hr	108 m³/hr
Pressure: Rod Side	1,232 psi	85 bar
Pressure: Piston Side	1,886 psi	130 bar
Material Cylinder Diameter	9"	230 mm
Max Strokes Per Minute	Rod Side Piston Side	31 31
Volume Control	Zero to Full	
Hopper Vibrator	Standard	
Hard-Chromed Material Cylinders	Standard	
Hydraulic System	Closed Loop	
Hydraulic System Pressure	5,075 psi	350 bar
Differential Cylinder Diameter	5.5"	140 mm
Rod Diameter	3"	80 mm
Maximum Size Aggregate	2.4"	60mm

This product specification could be changed by DY Corporation without notice to improve the quality.

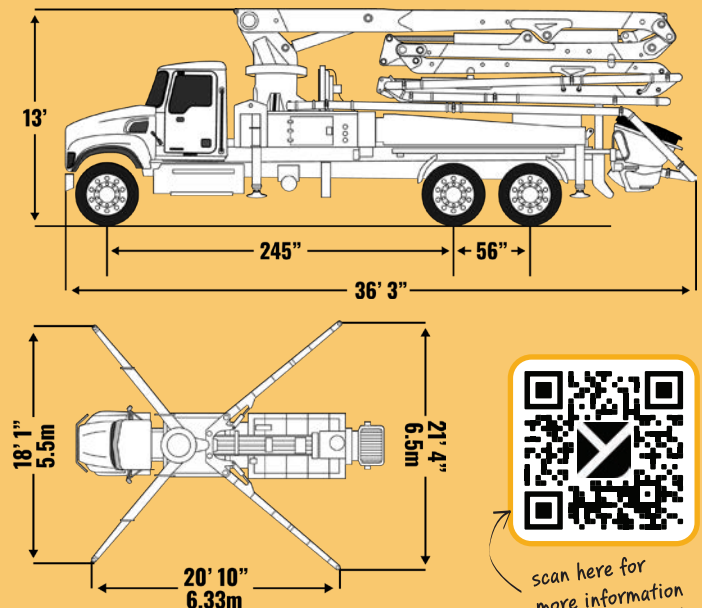
BOOM TYPE: 5-SECTION ZZ



WORKING RANGE



DIMENSIONS AND OUTRIGGER SPREAD



Photos and drawings are for illustrative purposes only.
Dimensions will vary with different truck makes, models, and specifications.
For available options, please contact the factory.

TRUCK MOUNTED CONCRETE BOOM PUMP

37X-4R



The 37X-4R is a practical solution for efficient concrete placement. What sets the 37X-4R apart is its budget-friendly classic straight-forward roll-and-fold boom configuration. This design ensures remarkable stability, a tried and true boom configuration, and the pumping performance you would expect from a DY. Perfectly suited for residential and commercial projects, it eliminates the need for constant reconfiguration, making high-volume pumping effortless. Choose the 37X-4R for a reliable and user-friendly concrete boom pump that gets the job done efficiently.

FEATURES

Verticle Reach: 119' 9"

Water Tank Capacity: 132 Gal

Horizontal Reach: 106' 8"

Zero to Full Volume Control

Closed Loop Hydraulic System

Hard-Chromed Material Cylinders

Hopper Vibrator

Rod Side Output: 209 yd³/hr



37X-4R SPECIFICATIONS

AXLE WEIGHTS	LBS	KG
Front Axle Weight	18,386 lbs	8,339 kg
Rear Axle Weight	39,484 lbs	17,909 kg
Total Weight *Based on WS Chassis	59,870 lbs	26,249 kg

BOOM HEIGHT & REACH		
Vertical Reach	119' 9"	36.5 m
Horizontal Reach	106' 8"	32.5 m
Reach From Front Of Truck	101' 7"	30.96 m
Reach Depth	78' 1"	23.8 m
Unfolding Height	27' 7"	8.4 m

BOOM SECTION ARTICULATION	
1st Section Articulation	93°
2nd Section Articulation	180°
3rd Section Articulation	240°
4th Section Articulation	250°

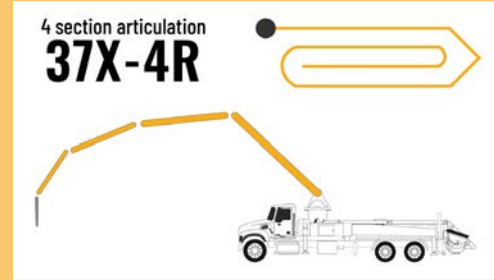
BOOM SECTION LENGTHS		
1st Section Length	29' 9"	8.9 m
2nd Section Length	25' 9"	7.85 m
3rd Section Length	25' 11"	7.9 m
4th Section Length	25' 9"	7.85 m

GENERAL SPECIFICATIONS		
Water Tank Capacity	132 Gal	500L
Pipeline Size (ID) Metric Ends	5"	125 mm
Rotation		
End Hose Length	11' 6"	3.5 m
End Hose Diameter	5"	125 mm
Outrigger Spread Front: Telescope Out	20' 4"	6.2 m
Outrigger Spread Rear: Swing Out	25' 3"	7.7 m

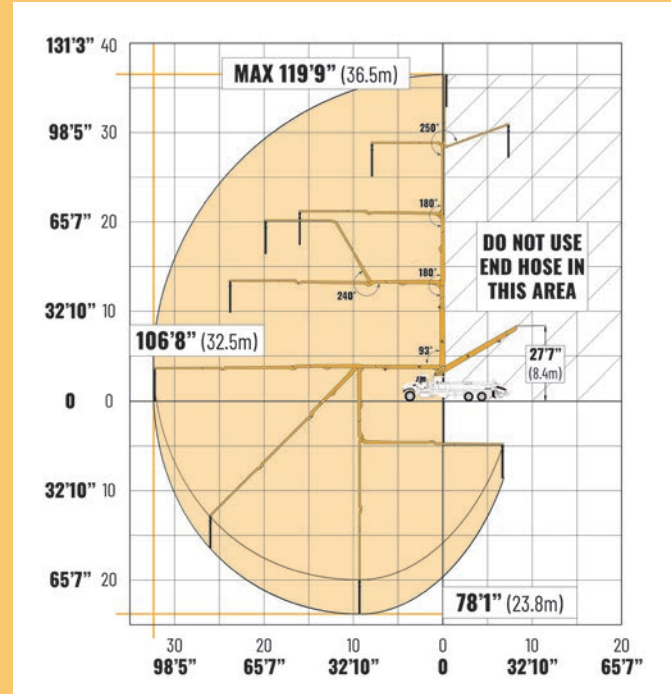
PUMP SPECIFICATIONS		
Output: Rod Side	209 yd ³ /hr	160 m ³ /hr
Output: Piston Side	141 yd ³ /hr	108 m ³ /hr
Pressure: Rod Side	1,262 psi	87 bar
Pressure: Piston Side	1,886 psi	130 bar
Material Cylinder Diameter	9"	230 mm
Max Strokes Per Minute	Rod Side Piston Side	29 21
Volume Control	Zero to Full	
Hopper Vibrator	Standard	
Hard-Chromed Material Cylinders	Standard	
Hydraulic System	Closed Loop	
Hydraulic System Pressure	5,075 psi	350 bar
Differential Cylinder Diameter	5.5"	140 mm
Rod Diameter	3"	80 mm
Maximum Size Aggregate	2.4"	60 mm

This product specification could be changed by DY Corporation without notice to improve the quality.

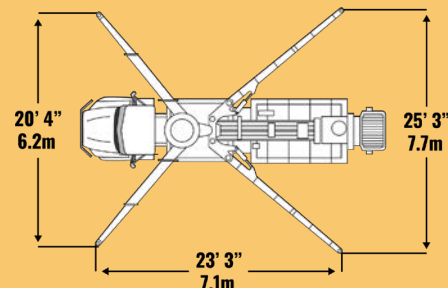
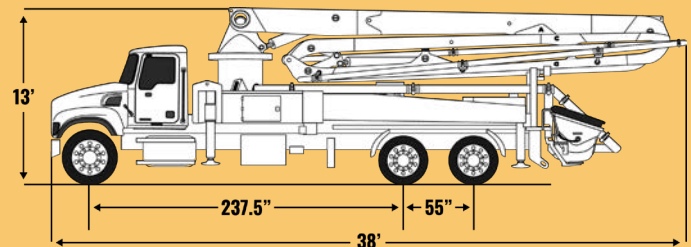
BOOM TYPE: 4-SECTION R



WORKING RANGE



DIMENSIONS AND OUTRIGGER SPREAD



scan here for
more information
about this pump!

Photos and drawings are for illustrative purposes only.
Dimensions will vary with different truck makes, models, and specifications.
For available options, please contact the factory.

TRUCK MOUNTED CONCRETE BOOM PUMP

38X-5ZR



Excelling in both residential and commercial projects, the 38X-5ZR is a versatile powerhouse. Its compact design features a ZR-type boom configuration, ensuring exceptional maneuverability. This model features DY's 360-degree continuous rotating boom, streamlining operations and reducing the need for excessive truck repositioning on the job site. Residential and commercial builders alike benefit from an increased ROI due to optimal machine performance, low cost of ownership, and decreased equipment downtime. Thanks to the 38X-5ZR's narrow profile, it maneuvers seamlessly through urban environments and confined spaces.



FEATURES

Unfolding Height: 23' 7"

Water Tank Capacity: 132 Gal

Vertical Reach: 123' 4"

Horizontal Reach: 109' 11"

Zero to Full Volume Control

Closed Loop Hydraulic System

Hard-Chromed Material Cylinders

Hopper Vibrator

Rod Side Output: 209 yd³/hr

360° Continuous Swing Turret

38X-5ZR SPECIFICATIONS

AXLE WEIGHTS	LBS	KG
Front Axle Weight	18,386 lbs	8,339 kg
Rear Axle Weight	39,484 lbs	17,909 kg
Total Weight *Based on WS Chassis	57,870 lbs	26,249 kg

BOOM HEIGHT & REACH

Vertical Reach	123' 4"	37.5 m
Horizontal Reach	109' 11"	33.5 m
Reach From Front Of Truck	97' 5"	29.7 m
Reach Depth	83' 4"	25.4 m
Unfolding Height	23' 7"	7.2 m

BOOM SECTION ARTICULATION

1st Section Articulation	92°
2nd Section Articulation	180°
3rd Section Articulation	245°
4th Section Articulation	180°
5th Section Articulation	250°

BOOM SECTION LENGTHS

1st Section Length	27' 3"	8.3 m
2nd Section Length	20' 1"	6.1 m
3rd Section Length	20' 1"	6.1 m
4th Section Length	21' 4"	6.5 m
5th Section Length	21' 4"	6.5 m

GENERAL SPECIFICATIONS

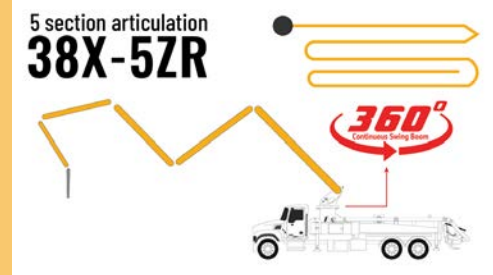
Water Tank Capacity	132 Gal	500L
Pipeline Size (ID) Metric Ends	5"	125 mm
Rotation	360°	Continuous
End Hose Length	11' 6"	3.5 m
End Hose Diameter	5"	125 mm
Outrigger Spread Front: Telescope Out	20' 4"	6.2 m
Outrigger Spread Rear: Swing Out	25'	7.6 m

PUMP SPECIFICATIONS

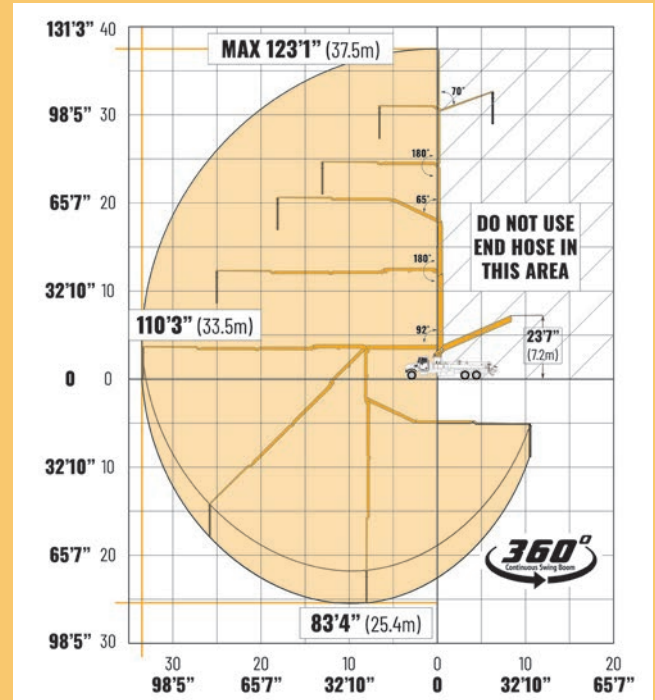
Output: Rod Side	209 yd ³ /hr	160 m ³ /hr
Output: Piston Side	141 yd ³ /hr	108 m ³ /hr
Pressure: Rod Side	1,232 psi	85 bar
Pressure: Piston Side	1,886 psi	130 bar
Material Cylinder Diameter	9"	230 mm
Max Strokes Per Minute	Rod Side Piston Side	31 21
Volume Control	Zero to Full	
Hopper Vibrator	Standard	
Hard-Chromed Material Cylinders	Standard	
Hydraulic System	Closed Loop	
Hydraulic System Pressure	5,075 psi	350 bar
Differential Cylinder Diameter	5.5"	140 mm
Rod Diameter	3"	80 mm
Maximum Size Aggregate	2.4"	60 mm

This product specification could be changed by DY Corporation without notice to improve the quality.

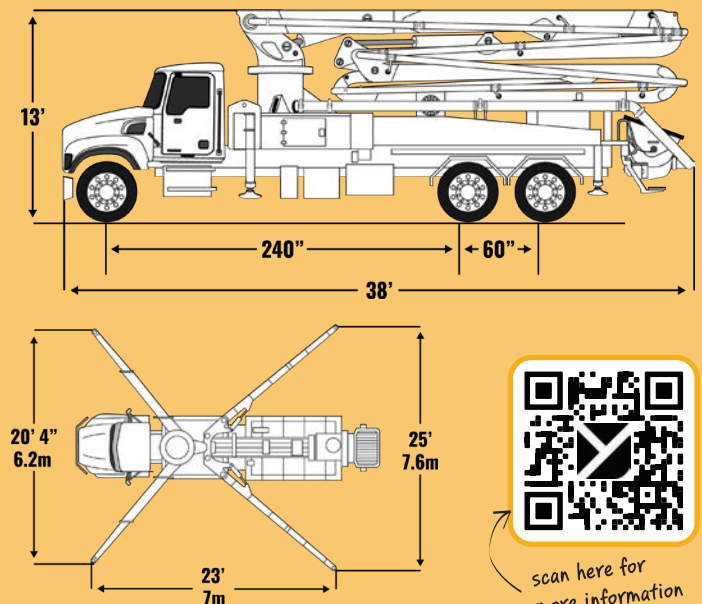
BOOM TYPE: 5-SECTION ZR



WORKING RANGE



DIMENSIONS AND OUTRIGGER SPREAD



scan here for more information about this pump!

Photos and drawings are for illustrative purposes only.
Dimensions will vary with different truck makes, models, and specifications.
For available options, please contact the factory.

TRUCK MOUNTED CONCRETE BOOM PUMP

40X-5ZR



Designed to maximize the potential of a three-axle chassis, the 40X-5ZR is a mid-size marvel that offers extended boom reach while keeping truck chassis costs in check. Whether tackling residential or commercial tasks, the 40X-5ZR is the perfect addition to your fleet of equipment. Its 360-degree continuous swing boom and five-section ZR boom articulation unlock access to previously inaccessible spaces, providing the freedom to navigate confined areas effortlessly. Experience enhanced capabilities, increased efficiency, and a transformative concrete pouring process with the 40X-5ZR.



FEATURES

Unfolding Height: 24' 9"

Water Tank Capacity: 132 Gal

Vertical Reach: 123' 4"

Horizontal Reach: 109' 11"

Zero to Full Volume Control

Closed Loop Hydraulic System

Hard-Chromed Material Cylinders

Hopper Vibrator

Rod Side Output: 209 yd³/hr

360° Continuous Swing Turret

40X-5ZR

SPECIFICATIONS

AXLE WEIGHTS	LBS	KG
Front Axle Weight	19,141 lbs	8,682 kg
Rear Axle Weight	41,299 lbs	18,733 kg
Total Weight *Based on WS Chassis	60,440 lbs	27,415 kg

BOOM HEIGHT & REACH

Vertical Reach	130' 2"	39.7 m
Horizontal Reach	117' 5"	35.8 m
Reach From Front Of Truck	107'	32.6 m
Reach Depth	89' 9"	27.4 m
Unfolding Height	24' 9"	7.6 m

BOOM SECTION ARTICULATION

1st Section Articulation	90°
2nd Section Articulation	180°
3rd Section Articulation	245°
4th Section Articulation	180°
5th Section Articulation	250°

BOOM SECTION LENGTHS

1st Section Length	27' 6"	8.4 m
2nd Section Length	22'	6.7 m
3rd Section Length	22'	6.7 m
4th Section Length	26' 3"	7 m
5th Section Length	26' 3"	7 m

GENERAL SPECIFICATIONS

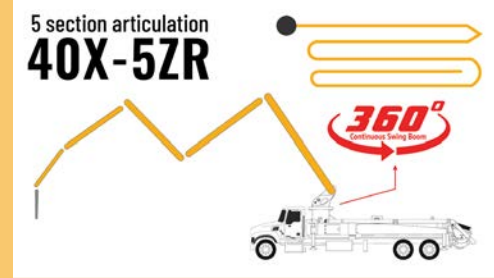
Water Tank Capacity	132 Gal	500L
Pipeline Size (ID) Metric Ends	5"	125 mm
Rotation	360°	Continuous
End Hose Length	11' 6"	3.5 m
End Hose Diameter	5"	125 mm
Outrigger Spread Front: Telescope Out	21'	6.4 m
Outrigger Spread Rear: Swing Out	28' 5"	8.7 m

PUMP SPECIFICATIONS

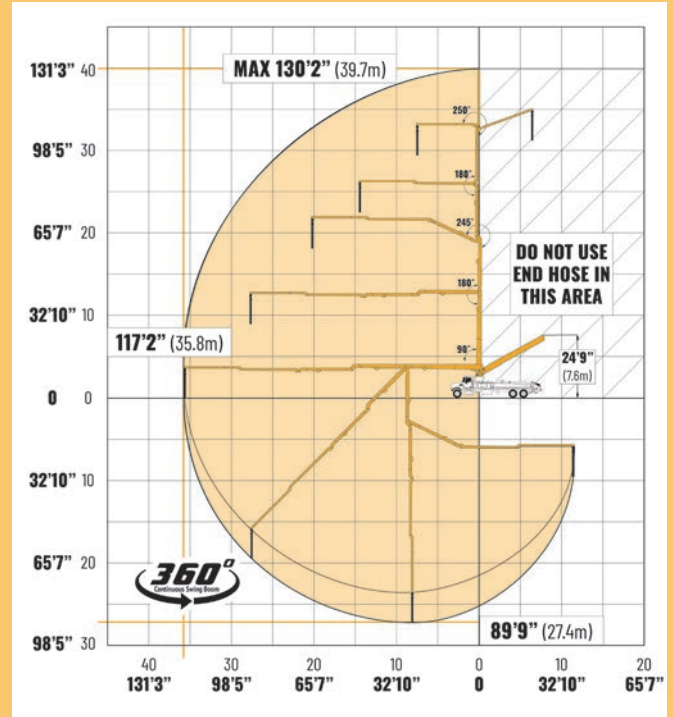
Output: Rod Side	209 yd ³ /hr	160 m ³ /hr
Output: Piston Side	141 yd ³ /hr	108 m ³ /hr
Pressure: Rod Side	1,232 psi	85 bar
Pressure: Piston Side	1,886 psi	130 bar
Material Cylinder Diameter	9"	230 mm
Max Strokes Per Minute	Rod Side Piston Side	31 21
Volume Control	Zero to Full	
Hopper Vibrator	Standard	
Hard-Chromed Material Cylinders	Standard	
Hydraulic System	Closed Loop	
Hydraulic System Pressure	5,075 psi	350 bar
Differential Cylinder Diameter	5.5"	140 mm
Rod Diameter	3"	80 mm
Maximum Size Aggregate	2.4"	60 mm

This product specification could be changed by DY Corporation without notice to improve the quality.

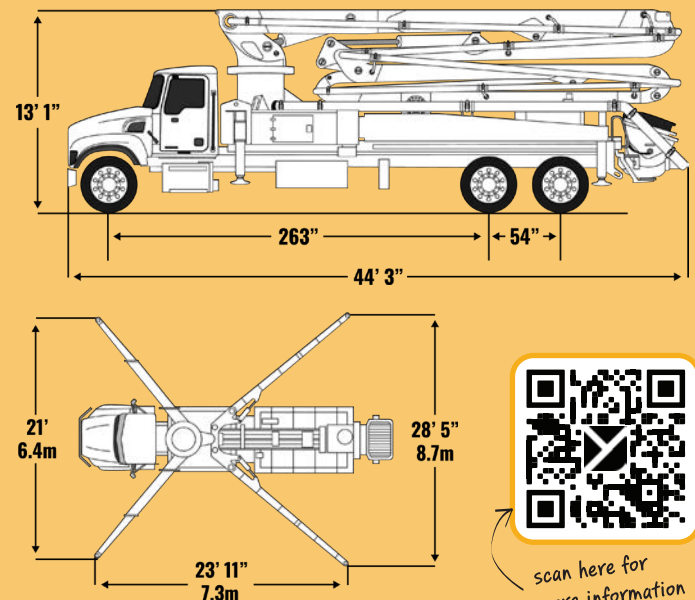
BOOM TYPE: 5-SECTION ZR



WORKING RANGE



DIMENSIONS AND OUTRIGGER SPREAD



scan here for more information about this pump!

Photos and drawings are for illustrative purposes only. Dimensions will vary with different truck makes, models, and specifications. For available options, please contact the factory.

TRUCK MOUNTED CONCRETE BOOM PUMP

43X-5RZ



The 43X-5RZ concrete boom pump is your go-to choice for both residential and commercial projects. With its five-section boom design and continuous swing turret, it offers exceptional flexibility to access tight spaces, making it ideal for navigating complex job sites. This versatile pump excels in commercial applications, effortlessly pouring concrete into mezzanines, upper-level walls, and more. On residential jobs, it enhances speed and accuracy while eliminating the need for traditional mixers and buckets. Elevate your efficiency with DY's 43X-5RZ Concrete Boom Pump.



FEATURES

Water Tank Capacity: 132 Gal

Vertical Reach: 138' 9"

Horizontal Reach: 125' 8"

Unfolding Height: 26' 11"

Rod Side Output: 209 yd³/hr

Zero to Full Volume Control

Closed Loop Hydraulic System

Hard-Chromed Material Cylinders

Hopper Vibrator

360° Continuous Swing Turret

43X-5RZ SPECIFICATIONS

AXLE WEIGHTS	LBS	KG
Front Axle Weight	28,990 lbs	13,150 kg
Rear Axle Weight	29,176 lbs	17,770 kg
Total Weight		
*Based on Mack Tandem/Tandem Chassis	68,166 lbs	30,920 kg

BOOM HEIGHT & REACH		
Vertical Reach	138' 9"	42.3 m
Horizontal Reach	125' 8"	38.3 m
Reach From Front Of Truck	120' 7"	36.76 m
Reach Depth	101' 1"	30.8 m
Unfolding Height	26' 11"	8.2 m

BOOM SECTION ARTICULATION	
1st Section Articulation	92°
2nd Section Articulation	180°
3rd Section Articulation	180°
4th Section Articulation	245°
5th Section Articulation	250°

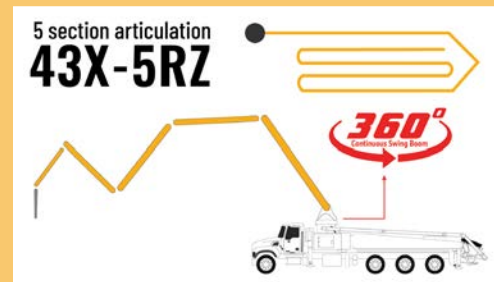
BOOM SECTION LENGTHS		
1st Section Length	25' 7"	7.8 m
2nd Section Length	22' 4"	6.8 m
3rd Section Length	23' 7"	7.2 m
4th Section Length	26' 3"	8 m
5th Section Length	27' 6"	8.39 m

GENERAL SPECIFICATIONS		
Water Tank Capacity	211 Gal	800L
Pipeline Size (ID) Metric Ends	5"	125 mm
Rotation	360°	Continuous
End Hose Length	11' 6"	3.5 m
End Hose Diameter	5"	125 mm
Outrigger Spread Front: Telescope Out	26' 3"	8 m
Outrigger Spread Rear: Swing Out	29' 10"	9.1 m

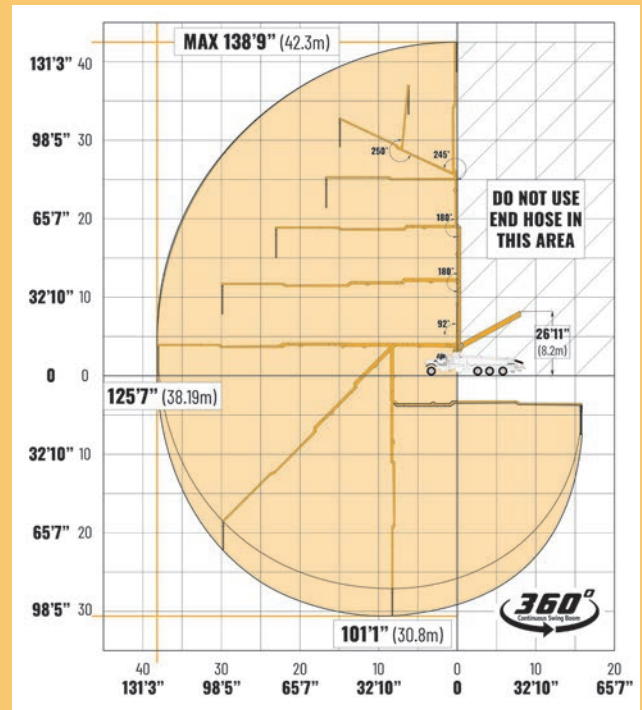
PUMP SPECIFICATIONS		
Output: Rod Side	209 yd ³ /hr	160 m ³ /hr
Output: Piston Side	141 yd ³ /hr	108 m ³ /hr
Pressure: Rod Side	1,232 psi	85 bar
Pressure: Piston Side	1,886 psi	130 bar
Material Cylinder Diameter	9"	230 mm
Max Strokes Per Minute	Rod Side 31 Piston Side 21	
Volume Control	Zero to Full	
Hopper Vibrator	Standard	
Hard-Chromed Material Cylinders	Standard	
Hydraulic System	Closed Loop	
Hydraulic System Pressure	5,075 psi	350 bar
Differential Cylinder Diameter	5.5"	140 mm
Rod Diameter	3"	80 mm
Maximum Size Aggregate	2.4"	60 mm

This product specification could be changed by DY Corporation without notice to improve the quality.

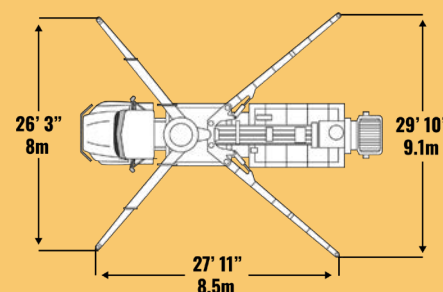
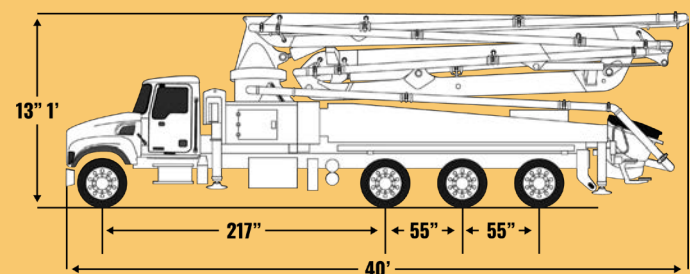
BOOM TYPE: 5-SECTION RZ



WORKING RANGE



DIMENSIONS AND OUTRIGGER SPREAD



scan here for more information about this pump!

Photos and drawings are for illustrative purposes only. Dimensions will vary with different truck makes, models, and specifications. For available options, please contact the factory.

TRUCK MOUNTED CONCRETE BOOM PUMP

48X-5RZ



The 48X-5RZ – your ideal choice for commercial and industrial concrete projects. This advanced five-section boom pump features a 360-degree continuous swing boom for unmatched flexibility on the job site. It's perfect for concrete pumping with innovative X-style outriggers ensuring stability, even in challenging environments. The 48X-5RZ boosts efficiency, allowing you to meet project demands quickly. Reduce manual labor requirements and increase your ROI with the DY 48-meter concrete boom pump.

Plus, the 48X-5RZ is now available with optional special order 10" material cylinders for added versatility.



FEATURES

- Water Tank Capacity: 132 Gal*
- Outrigger Fuel Tank Capacity: 105 Gal*
- Vertical Reach: 155' 10"*
- Horizontal Reach: 141' 9"*
- Unfolding Height: 34' 1"*
- Rod Side Output: 209 yd³/hr*
- Zero to Full Volume Control*
- Closed Loop Hydraulic System*
- Hard-Chromed Material Cylinders*
- Hopper Vibrator*
- 360° Continuous Swing Turret*

48X-5RZ SPECIFICATIONS

AXLE WEIGHTS	LBS	KG
Front Axle Weight	17,863 lbs	8,102 kg
Rear Axle Weight	56,828 lbs	25,777 kg
Total Weight	74,691 lbs	33,879 kg
*Based on Mack Granite Chassis		

BOOM HEIGHT & REACH		
Vertical Reach	155' 10"	47.5 m
Horizontal Reach	141' 9"	43.2 m
Reach From Front Of Truck	133' 5"	40.66 m
Reach Depth	111' 11"	34.1 m
Unfolding Height	34' 1"	10.4 m

BOOM SECTION ARTICULATION	
1st Section Articulation	92°
2nd Section Articulation	180°
3rd Section Articulation	180°
4th Section Articulation	245°
5th Section Articulation	250°

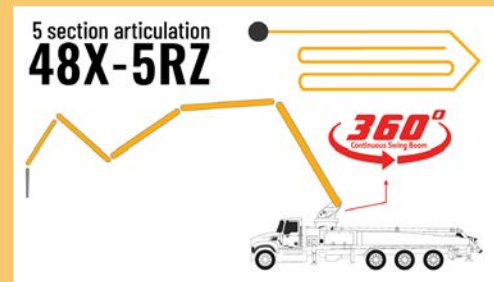
BOOM SECTION LENGTHS		
1st Section Length	31' 2"	9.5 m
2nd Section Length	25' 7"	7.8 m
3rd Section Length	25' 3"	7.7 m
4th Section Length	29' 6"	9 m
5th Section Length	30' 10"	9.4 m

GENERAL SPECIFICATIONS		
Water Tank Capacity	211 Gal	800L
Outrigger Fuel Tank Capacity	105 Gal	400L
Pipeline Size (ID) Metric Ends	5"	125 mm
Rotation	360°	Continuous
End Hose Length	11' 6"	3.5 m
End Hose Diameter	5"	125 mm
Outrigger Spread Front: Telescope Out	29' 1"	8.87 m
Outrigger Spread Rear: Swing Out	31' 6"	9.6 m

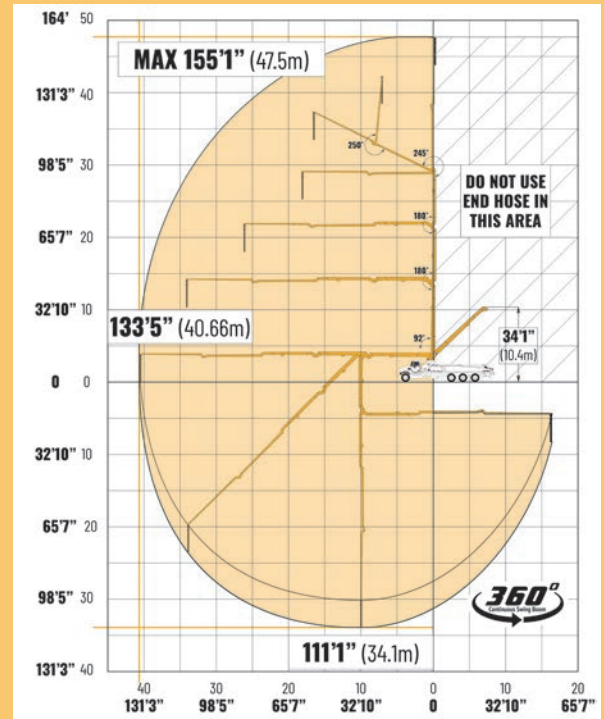
PUMP SPECIFICATIONS		
Output: Rod Side	209 yd ³ /hr	160 m ³ /hr
Output: Piston Side	141 yd ³ /hr	108 m ³ /hr
Pressure: Rod Side	1,232 psi	85 bar
Pressure: Piston Side	1,886 psi	130 bar
Material Cylinder Diameter	9"	230 mm
Max Strokes Per Minute	Rod Side 31 Piston Side 21	
Volume Control	Zero to Full	
Hopper Vibrator	Standard	
Hard-Chromed Material Cylinders	Standard	
Hydraulic System	Closed Loop	
Hydraulic System Pressure	5,075 psi	350 bar
Differential Cylinder Diameter	5.5"	140 mm
Rod Diameter	3"	80 mm
Maximum Size Aggregate	2.4"	60 mm

This product specification could be changed by DY Corporation without notice to improve the quality.

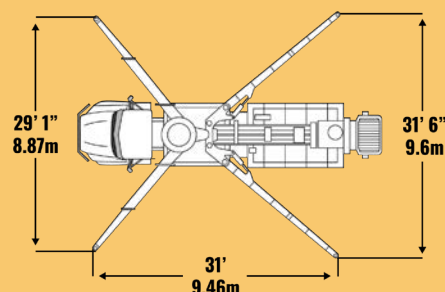
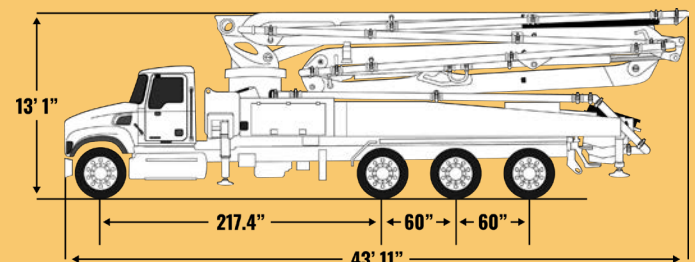
BOOM TYPE: 5-SECTION RZ



WORKING RANGE



DIMENSIONS AND OUTRIGGER SPREAD



scan here for more information about this pump!

Photos and drawings are for illustrative purposes only.
Dimensions will vary with different truck makes, models, and specifications.
For available options, please contact the factory.

TRUCK MOUNTED CONCRETE BOOM PUMP

52X-5RZ



The DY 52X-5RZ concrete boom pump is a game-changer for your construction needs. With impressive vertical reach for high-rise concrete pouring and a five-section design crafted from top-quality steel, this pump ensures unmatched durability and low maintenance requirements. The 360-degree continuous swing boom provides unparalleled flexibility on the job site. Perfect for both commercial and industrial projects, the 52X-5RZ is designed to meet your demands swiftly and efficiently.

The 52X-5RZ is Caltrans-approved. Now available with optional special order 10" material cylinders.



FEATURES

- Water Tank Capacity: 211 Gal*
- Outrigger Fuel Tank Capacity: 126 Gal*
- Vertical Reach: 167' 11"*
- Horizontal Reach: 154' 10"*
- Unfolding Height: 34' 1"*
- Rod Side Output: 235 yd³/hr*
- Zero to Full Volume Control*
- Closed Loop Hydraulic System*
- Hard-Chromed Material Cylinders*
- Hopper Vibrator*
- 360° Continuous Swing Turret*

52X-5RZ SPECIFICATIONS

AXLE WEIGHTS	LBS	KG
Front Axle Weight	37,522 lbs	17,020 kg
Rear Axle Weight	54,564 lbs	24,720 kg
Total Weight		
*Based on Mack MR Tandem/Tri Chassis	92,087 lbs	41,770 kg

BOOM HEIGHT & REACH

Vertical Reach	167' 11"	51.18 m
Horizontal Reach	154' 10"	47.19 m
Reach From Front Of Truck	148' 2"	45.16 m
Reach Depth	122' 8"	37.39 m
Unfolding Height	34' 1"	10.39m

BOOM SECTION ARTICULATION

1st Section Articulation	92°
2nd Section Articulation	180°
3rd Section Articulation	180°
4th Section Articulation	245°
5th Section Articulation	256°

BOOM SECTION LENGTHS

1st Section Length	33' 6"	10.2 m
2nd Section Length	29'	8.85 m
3rd Section Length	28' 8"	8.75 m
4th Section Length	31' 8"	9.65 m
5th Section Length	31' 12"	9.75 m

GENERAL SPECIFICATIONS

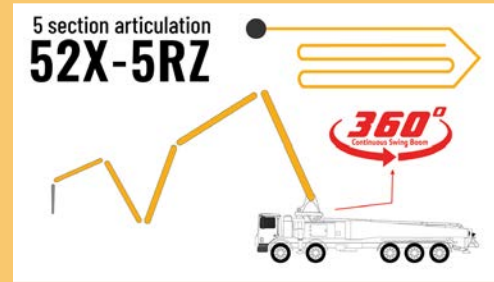
Water Tank Capacity	211 Gal	800L
Outrigger Fuel Tank Capacity	126 Gal	480L
Pipeline Size (ID) Metric Ends	5"	125 mm
Rotation	360°	Continuous
End Hose Length	11' 6"	3.5 m
End Hose Diameter	5"	125 mm
Outrigger Spread Front: Telescope Out	29' 1"	8.87 m
Outrigger Spread Rear: Swing Out	31' 6"	9.6 m

PUMP SPECIFICATIONS

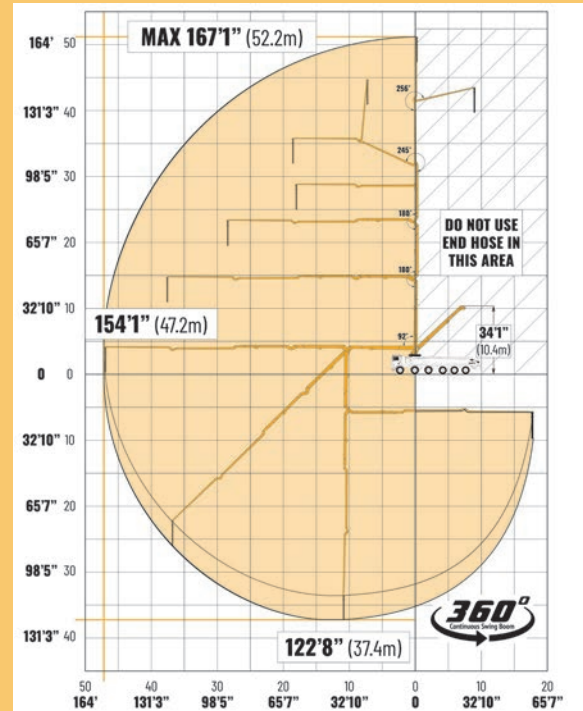
Output: Rod Side	235 yd ³ /hr	180 m ³ /hr
Output: Piston Side	158 yd ³ /hr	121 m ³ /hr
Pressure: Rod Side	1,232 psi	85 bar
Pressure: Piston Side	1,886 psi	130 bar
Material Cylinder Diameter	9"	230 mm
Max Strokes Per Minute	Rod Side 34 Piston Side 23	
Volume Control	Zero to Full	
Hopper Vibrator	Standard	
Hard-Chromed Material Cylinders	Standard	
Hydraulic System	Closed Loop	
Hydraulic System Pressure	5,075 psi	350 bar
Differential Cylinder Diameter	5.5"	140 mm
Rod Diameter	3"	80 mm
Maximum Size Aggregate	2.4"	60 mm

This product specification could be changed by DY Corporation without notice to improve the quality.

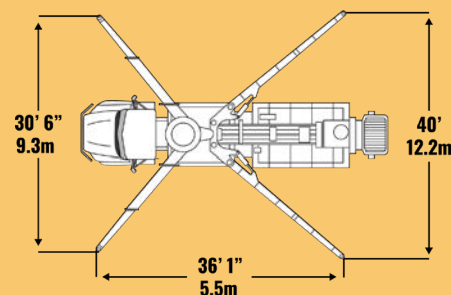
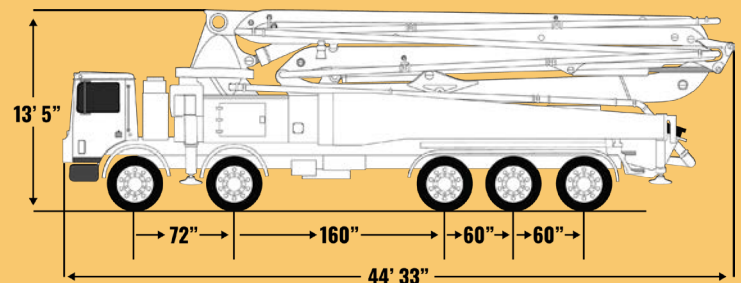
BOOM TYPE: 5-SECTION RZ



WORKING RANGE



DIMENSIONS AND OUTRIGGER SPREAD



scan here for more information about this pump!

Photos and drawings are for illustrative purposes only.
Dimensions will vary with different truck makes, models, and specifications.
For available options, please contact the factory.

TRUCK MOUNTED CONCRETE BOOM PUMP

57X-6RZ



DY Concrete Pumps' 57X-6RZ is your dependable and efficient solution for modern construction needs. Featuring a 6-section, 57-meter boom and x-style outriggers, this pump provides unparalleled maneuverability, making it ideal for high-rise and commercial projects. Its user-friendly controls simplify boom positioning, reducing labor requirements. No matter the challenge, it excels in efficiently delivering materials to elevated locations.

The 57X-6RZ offers various axle configurations to suit your specific requirements and can be mounted on a tridem-tridem chassis for states with restrictive weight requirements. Plus, the option to special order 10" material cylinders for enhanced versatility.



FEATURES

- Water Tank Capacity: 211 Gal*
- Outrigger Fuel Tank Capacity: 132 Gal*
- Vertical Reach: 185' 4"*
- Horizontal Reach: 172' 3"*
- Unfolding Height: 38' 1"*
- Rod Side Output: 235 yd³/hr*
- Zero to Full Volume Control*
- Multiple Axle Configurations Available*
- Closed Loop Hydraulic System*
- Hard-Chromed Material Cylinders*
- Hopper Vibrator*
- Optional 10" Material Cylinder Upgrade*

57X-6RZ SPECIFICATIONS

AXLE WEIGHTS	LBS	KG
Front Axle Weight	36,706 lbs	16,650 kg
Rear Axle Weight	58,841 lbs	26,690 kg
Total Weight		
*Based on Mack MR Tandem/Tri Chassis	95,504 lbs	43,320 kg

BOOM HEIGHT & REACH

Vertical Reach	185' 4"	56.5 m
Horizontal Reach	172' 3"	52.5 m
Reach From Front Of Truck	165' 7"	50.46 m
Reach Depth	136' 6"	41.6 m
Unfolding Height	38' 1"	11.6 m

BOOM SECTION ARTICULATION

1st Section Articulation	91°
2nd Section Articulation	180°
3rd Section Articulation	180°
4th Section Articulation	245°
5th Section Articulation	240°
6th Section Articulation	90°

BOOM SECTION LENGTHS

1st Section Length	37' 1"	11.2 m
2nd Section Length	30' 4"	9.25 m
3rd Section Length	30' 4"	9.25 m
4th Section Length	36' 1"	11 m
5th Section Length	22' 8"	6.9 m
6th Section Length	14' 9"	4.8 m

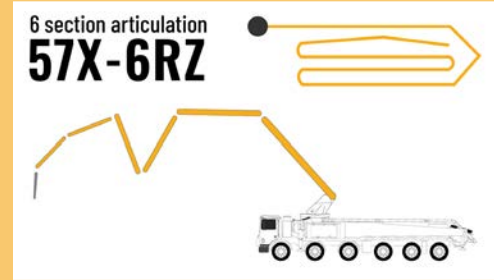
GENERAL SPECIFICATIONS

Water Tank Capacity	211 Gal	800L
Outrigger Fuel Tank Capacity	132 Gal	500L
Pipeline Size (ID) Metric Ends	5"	125 mm
Rotation	360°	
End Hose Length	11' 6"	3.5 m
End Hose Diameter	5"	125 mm
Outrigger Spread Front: Telescope Out	38' 9"	11.8 m
Outrigger Spread Rear: Swing Out	40' 4"	12.3 m

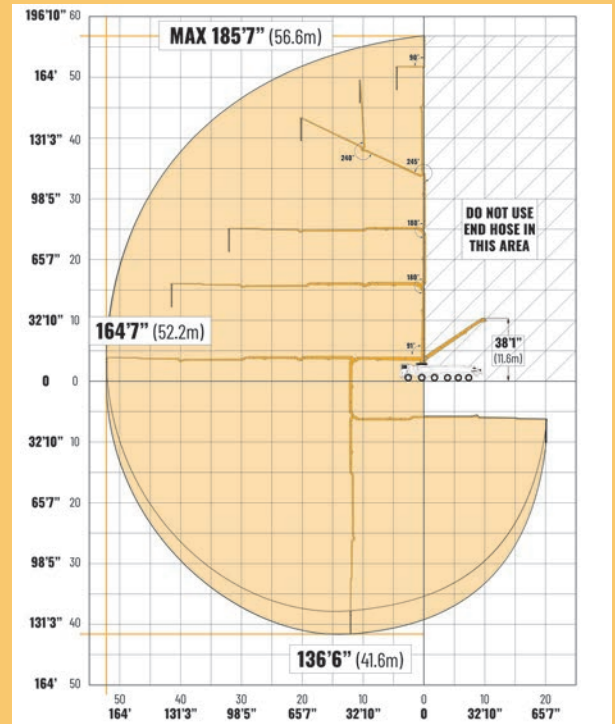
PUMP SPECIFICATIONS

Output: Rod Side	235 yd ³ /hr	180 m ³ /hr
Output: Piston Side	158 yd ³ /hr	121 m ³ /hr
Pressure: Rod Side	1,232 psi	85 bar
Pressure: Piston Side	1,886 psi	130 bar
Material Cylinder Diameter	9"	230 mm
Max Strokes Per Minute	Rod Side 34 Piston Side 23	
Volume Control	Zero to Full	
Hopper Vibrator	Standard	
Hard-Chromed Material Cylinders	Standard	
Hydraulic System	Closed Loop	
Hydraulic System Pressure	5,075 psi	350 bar
Differential Cylinder Diameter	5.5"	140 mm
Rod Diameter	3"	80 mm
Maximum Size Aggregate	2.4"	60 mm

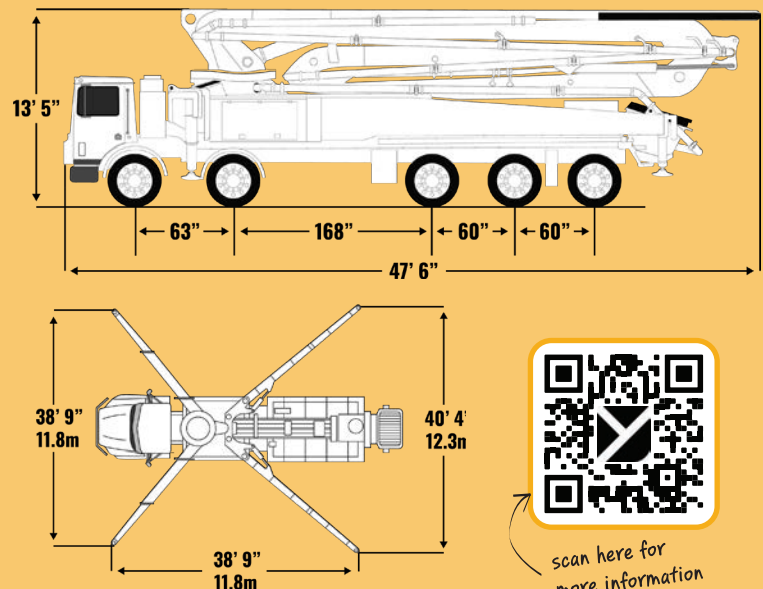
BOOM TYPE: 6-SECTION RZ



WORKING RANGE



DIMENSIONS AND OUTRIGGER SPREAD



Photos and drawings are for illustrative purposes only.
Dimensions will vary with different truck makes, models, and specifications.
For available options, please contact the factory.

This product specification could be changed by DY Corporation without notice to improve the quality.

TRUCK MOUNTED CONCRETE BOOM PUMP

63X-5RZ



DY Concrete Pumps' 63X-5RZ boom pump is a powerhouse designed for large-scale construction excellence. With an impressive 63-meter boom and DY's renowned customer service, this machine is your trusted companion for diverse projects, from stadiums to infrastructure developments. Its 5-section boom, paired with x-style outriggers, ensures exceptional maneuverability, making concrete delivery efficient in confined spaces and at elevated locations. Built to meet the demands of expansive construction sites, the 63X-5RZ is the go-to choice for your big projects.

This model has the option to special order 10" material cylinders for added versatility.



FEATURES

Water Tank Capacity: 132 Gal

Outrigger Fuel Tank Capacity: 158 Gal

Vertical Reach: 203' 7"

Horizontal Reach: 189' 3"

Unfolding Height: 42' 7"

Rod Side Output: 235 yd³/hr

Zero to Full Volume Control

Closed Loop Hydraulic System

Hard-Chromed Material Cylinders

Hopper Vibrator

Optional 10" Material Cylinder Upgrade

63X-5RZ SPECIFICATIONS

AXLE WEIGHTS	LBS	KG
Front Axle Weight	15,830 lbs	7,180 kg
Rear Axle Weight	15,830 lbs	7,180 kg
Total Weight	126,640 lbs	57,443 kg
*Based on Mack Terra Pro pictured		

BOOM HEIGHT & REACH

Vertical Reach	203' 7"	62.1 m
Horizontal Reach	189' 3"	57.7 m
Reach From Front Of Truck	183' 9"	56.06 m
Reach Depth	149' 6"	45.6 m
Unfolding Height	42' 7"	13 m

BOOM SECTION ARTICULATION

1st Section Articulation	91°
2nd Section Articulation	180°
3rd Section Articulation	180°
4th Section Articulation	230°
5th Section Articulation	230°

BOOM SECTION LENGTHS

1st Section Length	41"	12.5 m
2nd Section Length	33' 5"	10.2 m
3rd Section Length	33' 1"	10.1 m
4th Section Length	41"	12.5 m
5th Section Length	42"	12.8 m

GENERAL SPECIFICATIONS

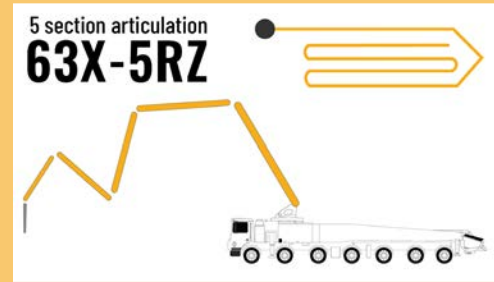
Water Tank Capacity	132 Gal	500L
Outrigger Fuel Tank Capacity	158 Gal	600L
Pipeline Size (ID) Metric Ends	5"	125 mm
Rotation	360°	
End Hose Length	11' 6"	3.5 m
End Hose Diameter	5"	125 mm
Outrigger Spread Front: Telescope Out	37' 7"	11.5 m
Outrigger Spread Rear: Swing Out	47' 6"	14.5 m

PUMP SPECIFICATIONS

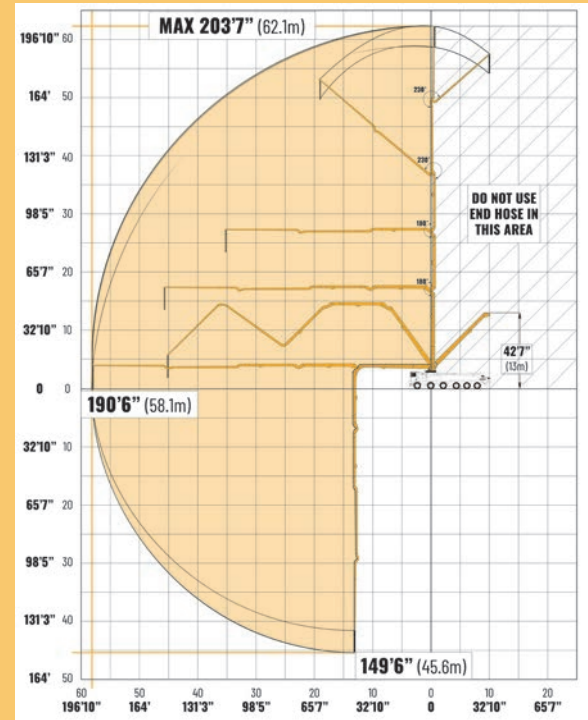
Output: Rod Side	235 yd ³ /hr	180 m ³ /hr
Output: Piston Side	158 yd ³ /hr	121 m ³ /hr
Pressure: Rod Side	1,232 psi	85 bar
Pressure: Piston Side	1,886 psi	130 bar
Material Cylinder Diameter	9"	230 mm
Max Strokes Per Minute	Rod Side 34 Piston Side 23	
Volume Control	Zero to Full	
Hopper Vibrator	Standard	
Hard-Chromed Material Cylinders	Standard	
Hydraulic System	Closed Loop	
Hydraulic System Pressure	5,075 psi	350 bar
Differential Cylinder Diameter	5.5"	140 mm
Rod Diameter	3"	80 mm
Maximum Size Aggregate	2.4"	60 mm

This product specification could be changed by DY Corporation without notice to improve the quality.

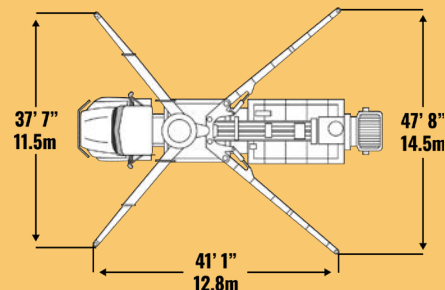
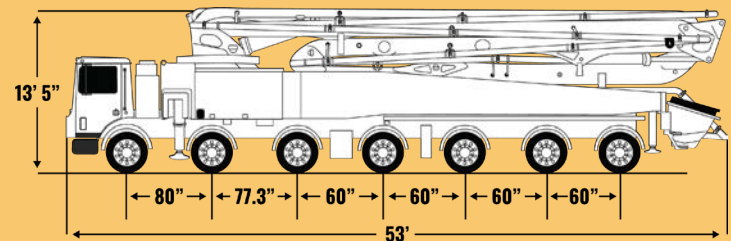
BOOM TYPE: 5-SECTION RZ



WORKING RANGE



DIMENSIONS AND OUTRIGGER SPREAD



scan here for
more information
about this pump!

Photos and drawings are for illustrative purposes only.
Dimensions will vary with different truck makes, models, and specifications.
For available options, please contact the factory.

48X-5RZ

CONEXPO 2023 SHOW TRUCK

LIQUID STONE CONCRETE

BURELSON, TX, USA





THE DY SERVICE CENTER

COMPREHENSIVE SERVICE FOR ALL MAKES AND MODELS OF CONCRETE PUMPS

DY Concrete Pumps' dedicated Service Center is operated by industry-leading pump technicians ready to assist you with any of your concrete pump needs. The DY Service Center conveniently provides pump maintenance for every concrete pump make and model available in the United States and Canada. Our ability to work on a wide range of concrete pumps sets the DY Service Center apart from most service options currently available.

Expect fast, attentive service from our knowledgeable staff at our Service Center. The DY Service Center is the premier choice for concrete pump maintenance; we know how to get it done.

Some of the services we offer include:

● **REMOTE CONTROL REPAIR**

On top of carrying Autech Remote Systems, our team can repair most make and model remote systems. Including but not limited to: HBC, Scanreco, and Autech.

● **BOOM SYSTEM REPLACEMENT**

Re-piping your boom system is a cumbersome and time-consuming job. Looking to re-pipe your concrete pump but don't have the time or manpower to do so? The DY Service Team will remove and replace your system for you. We measure and make systems in-house for all makes and models.

● **SERVICE ON ALL MAKES AND MODELS**

The DY Service Center is not just for DY Pumps. Our talented service team has decades of industry experience working with all makes and models of concrete pumps, including, but not limited to, Putzmeister, Sany, Schwing, Alliance, Concord, Cifa, and Reed.

● **INSPECTION REPORTS**

Keep your fleet running in peak condition with regular Inspection Reports by one of our expert Service Technicians. Inspection Reports include a 40-point system inspection, consulting, and a detailed report on necessary or upcoming maintenance.



**CALL TO SCHEDULE AN
APPOINTMENT TODAY!
1-844-397-8677**

DY
Concrete Pumps Inc.

WWW.DYCONCRETEPUMPS.COM | 42

CHASSIS OPTIONS



MACK *Models: TerraPro, Granite*

Mack Trucks, established in 1900, is a prominent manufacturer of medium-duty and heavy-duty trucks, as well as proprietary engines and transmissions. Mack is part of the Volvo Group, a global leader in various transportation sectors. Known for their quality and reliability, Mack Trucks is dedicated to providing tools and services that support business success and achievement for their customers.



MACK



KENWORTH *Model: T880*

Kenworth stands as a symbol of engineering excellence and driver comfort. Known for their innovative designs and cutting-edge technology, they prioritize precision and productivity. Their commitment to craftsmanship has made them a trusted choice for demanding industries. When it comes to combining performance and driver satisfaction, Kenworth is the name that stands out.



WESTERN STAR *Models: 47X, 49X*

Western Star Trucks, founded in 1967, is a globally recognized manufacturer of heavy-duty trucks, headquartered in Cleveland, Ohio, with manufacturing operations in Canada. Western Star has continually pushed the boundaries of design and technology. Today, it stands as a premier producer of heavy-duty trucks, offering ultimate comfort, power, and durability.



WESTERN STAR



PETERBILT *Models: 367, 520*

Peterbilt is at the forefront of technology in its products and services. Collaborating with top-tier suppliers, Peterbilt integrates cutting-edge technologies into its vehicles, systems, powertrain components, hardware, and software to deliver exceptional performance and value. Their powerful engines and customizable features make them a beacon of flexibility in the trucking industry.



FREIGHTLINER *Models: M2, 108SD, 114SD*

Founded in 1942, Freightliner is a driving force in the heavy-duty trucking industry. Combining a rich history with cutting-edge technology and a passion for innovation, Freightliner has become one of North America's best-selling heavy-duty truck brand. Their focus on quality continues to shape trucks that propel businesses to success, making a lasting impact on the road since their inception.



33X-5ZZ

BROWNWOOD CONCRETE PUMPING
EDINBURG, TX, USA



37X-4R

MILLER'S CONCRETE PUMPING
GRABILL, IN, USA

"I have ran a handful of pumps, but none of which have even been close to as smooth as my DY 37X-4R! I get compliments constantly about the steady flow of concrete, how smooth the boom moves, and the lack of hose shake from the stroke. Not only have they supplied us with three phenomenal pumps, they seem to be more than willing to provide awesome customer service! I couldn't be happier that we made the choice to go with DY!!!"

-Brandon Trumbull, Owner/Operator





DY
Concrete Pumps Inc.

LIGHT UP YOUR INDUSTRY

WITH CLASS-LEADING PAINT FROM DY

A GOOD PAINT JOB IS LIKE A FIRM HANDSHAKE

You only get one first impression. So why make it a bad one?

With a paint job from DY, you are sure to light up your customer's faces the first time and every time after.

WHY CHOOSE DY?



**BUILT TO
PERFORM**

- Vibrant, Industrial Paint by Akzo Nobel
- Custom Mixes Readily Available
- Spray-On Non-Slip Coatings
- Fast Cure Times in our State-Of-The-Art Booth
- In-House Custom Rigging and Brackets for Repeatability
- Full Equipment Refurbishments
- Vinyl Graphics and Decal Packages



www.BuyConcreteEquipment.com
(682) 350-9949

Sell Your Equipment

If you're looking to sell your equipment, trust us to maximize your equipment's exposure and connect you with quality sales leads. We make the selling process efficient and cost-effective.

Buy with Confidence

Whether you're a first-time buyer or a seasoned pro, we'll guide you through the process, ensuring your satisfaction with every aspect of your used equipment purchase.

Expertise & Support

Count on us for a helping hand when buying or selling used concrete equipment. Our expert team is ready to guide you with top-notch service from the start. We focus on building lasting relationships with our customers, ensuring you get the service you deserve. With a wide range of used concrete pumps and other concrete equipment, we connect you to buyers globally for a smooth sale. Your satisfaction is our priority, and our experienced sales staff is here to guarantee a seamless transaction.

DY PARTS DEPARTMENT

SAME-DAY OR OVERNIGHT SHIPPING ACROSS THE UNITED STATES AND CANADA

DY's extensive parts inventory includes parts for every concrete pump make and model available in the United States and Canada. We offer original manufacturer parts (OEM) and cost-effective, reliable aftermarket products.

A DEDICATED PARTS DEPARTMENT IN EVERY LOCATION


DY carries an extensive inventory of all the necessary parts and components to keep your pumps up and running.

All OEM DY replacement parts offer the same exceptional quality as the originals to deliver relentless performance in even the most extreme operating conditions.

A COMPLETE SELECTION OF PUMP REPLACEMENT PARTS

While we design, engineer, and construct all DY products to provide many years of reliable service, you may still need to replace worn or damaged parts, as well as OEM DY wear parts and twin wall boom systems to keep your pump in peak operating condition.





**BIG EQUIPMENT
REQUIRES
BIG EQUIPMENT**

WE DON'T HAVE THE LARGEST PAINT BOOTH IN THE SOUTH JUST FOR FUN.

At DY Concrete Pumps, we operate the largest paint booth in the Southern United States because we build some of the largest equipment in the country.

Now, we are opening up our booth to you.

DY's paint team is led by Jose Garica, a master painter of over 25 years.


Jose and his team are capable of any paint or repair job you can throw at them.

With the state-of-the-art facilities at DY, this expert team pushes the boundaries of what's possible in efficiency, quality, and reliability.

So if it's big, small, complicated, or all of the above, trust that DY can put the best paint job in the industry on it.



BUILT TO *PERFORM*



DY CONCRETE PUMPS TEXAS HEADQUARTERS



VISIT THE DY HEADQUARTERS IN BEAUTIFUL NORTH TEXAS!

LOCATED RIGHT OUTSIDE THE DALLAS-FORT WORTH METROPLEX IN ALVARADO, TX

- ▶ See our Texas-sized paint booth, the largest in the South!
- ▶ Visit the only concrete pump service center in Texas.
- ▶ Meet the team that builds your pumps and see our production process.

ASK YOUR SALES REPRESENTATIVE HOW TO SCHEDULE A VISIT TO OUR FACILITY!

BUILT TO PERFORM



LET'S BUILD THE CONCRETE PUMP OF YOUR DREAMS

At DY Concrete Pumps, we love to make dreams come true. We offer complete pump customization from our custom vinyl wraps to perfectly color-matched paint jobs and the option to add on additional accessories; our team loves the challenge of creating something unique for you. If you can dream it, we can build it!

48X-5RZ

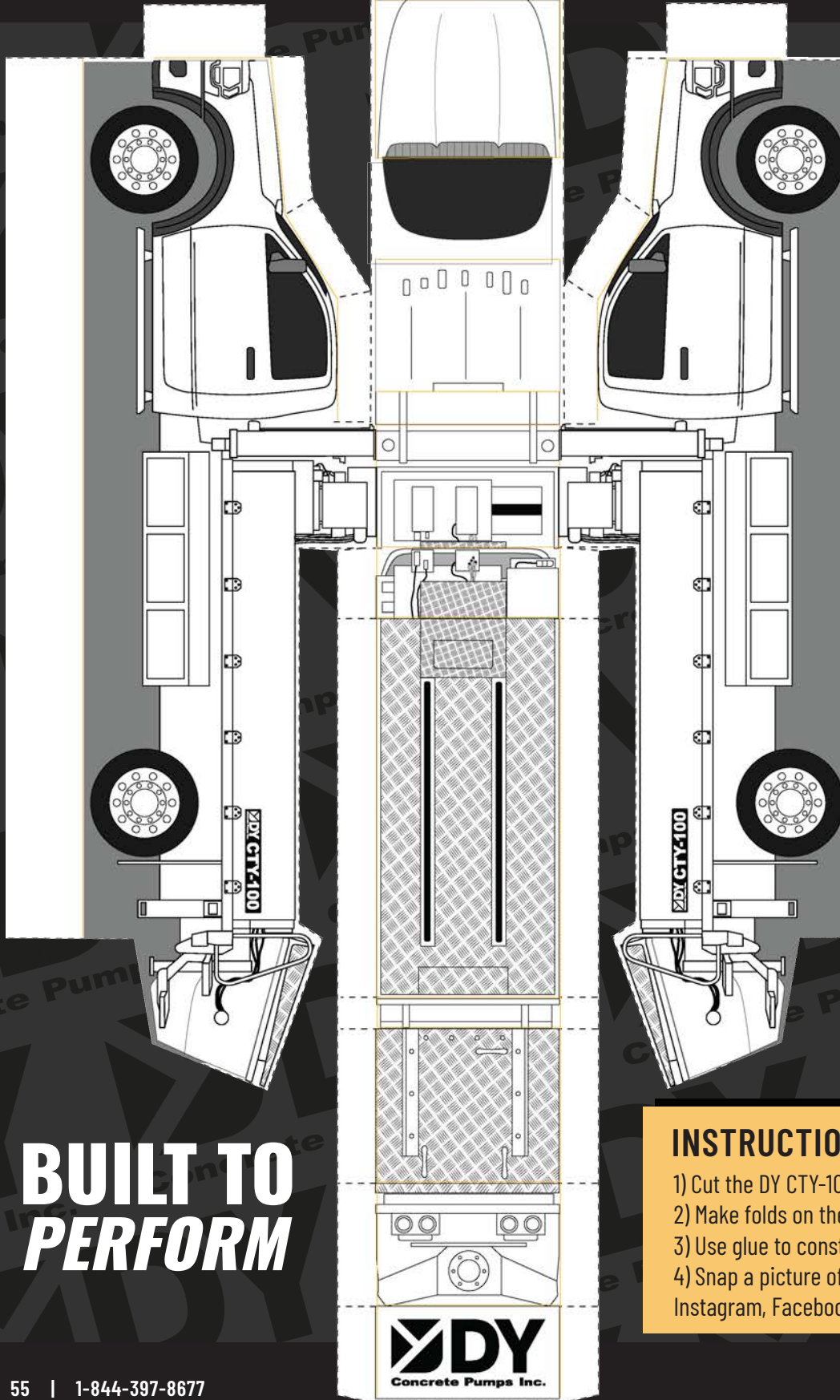
BIGFOOT CONCRETE PUMPING
GEORGETOWN, TX, USA



BUILT TO PERFORM



BUILD YOUR OWN DY CTY-100



The CTY-100 is a versatile truck-mounted line pump, efficiently designed to simplify your concrete pumping needs. Built on a medium-duty truck chassis, it brings the convenience of operation without the requirement of a commercial driver's license (CDL), making it accessible and user-friendly for a wide range of construction projects. The CTY 100's flatbed design not only allows for exceptional maneuverability but also provides convenient deck space for storing hoses and other accessories for more efficient concrete pumping.

1-844-397-8677 | WWW.DYCONCRETEPUMPS.COM

**BUILT TO
PERFORM**

INSTRUCTIONS:

- 1) Cut the DY CTY-100 out along the dotted lines.
- 2) Make folds on the yellow lines.
- 3) Use glue to construct the CTY-100.
- 4) Snap a picture of your creation and tag us on Instagram, Facebook, or LinkedIn!

38X-5ZR

WENNING CONCRETE PUMPING, LLC.

COLDWATER, OH, USA

Full custom paint job done by the DY Paint
Department and custom axle configuration by the
DY Production Team.



48X-5RZ

HOSKINSON CONTRACTING
GILLETTE, WY, USA

"I have run new pumps and old pumps and just about every brand out there, and I can tell you my DY delivers on high expectations. Working with the staff at DY versus their competitors is absolutely superior bar none; from the bottom to the top the company's full of great people that are easy to work with before and after the sale. Can't recommend DY enough and won't call anyone else for anything pump-related."

- Brody Romkee, Operator



TECHNICAL TRAINING

At DY Concrete Pumps, we believe in empowering our customers with knowledge to enhance their experience with our products.

To do that, DY offers comprehensive technical training courses catered to operators and mechanics of all levels. Our courses include introductory training on DY's electrical and hydraulic systems and more advanced training on these systems, ensuring that you gain a deep understanding of our equipment, no matter your skill level. Each session combines classroom theory with practical, hands-on training components. Our educational simulations and demonstrations ensure a dynamic learning experience that reinforces theory through hands-on practice. With an average size class of 10-12 participants, these sessions provide a personalized learning environment where every attendee can understand the intricacies of our equipment and systems.

Our instructor, Darcy Feihle, is DY's Technical Director who brings over 30 years of industry experience. With Darcy's instruction, you'll gain insights and skills that are second to none. Whether you're just starting in the field or have years of experience, our Technical Training is inclusive and aims to enrich your expertise. Join us in embracing the future of concrete pumping through DY Concrete Pumps' Technical Training and take your skills to the next level.

DY'S CURRENT TRAINING CLASSES INCLUDE:

- ▶ Intro to DY's Electrical and Hydraulic Systems
- ▶ Advanced Electrical and Hydraulic Systems
- ▶ Plus more to come!

INTERESTED IN SCHEDULING A TECHNICAL TRAINING WITH YOUR CREW AT THE DY TEXAS HEADQUARTERS? HERE'S HOW:

Simply send an email to
training@dyconcretepumps.com
for more information and to schedule a session!



BUILT TO PERFORM

MEET THE TEAM

SUPPORT AND PRODUCTION MANAGEMENT



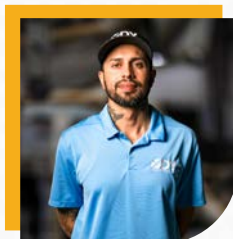
Joey Browning

North American Parts Manager
JoeyB@dyconcretepumps.com



Scott Straley

Parts Technician - Outside Sales
Scott.Straley@dyconcretepumps.com



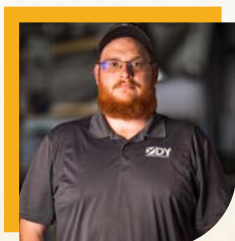
Alex Perez

Parts Technician
DY-PartsTech-2@dyconcretepumps.com



Jayson Wallace

Service & Technical Support
Jayson.Wallace@dyconcretepumps.com



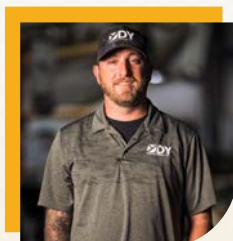
Dusty Barrett

Service Manager
Dustin.Barrett@dyconcretepumps.com



Darcy Feihle

Technical Director
Darcy@dyconcretepumps.com



Cody Swindell

Production Manager
Cody.Swindell@dyconcretepumps.com



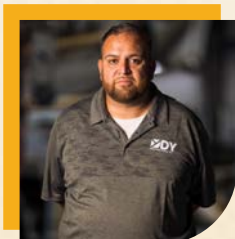
Dusty Mitchell

Assistant Production Manager
Dusty.Mitchell@dyconcretepumps.com



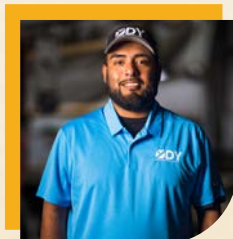
Anthony Perry

Quality Control Manager
Anthony.Perry@dyconcretepumps.com



Jose Garcia

Paint Manager
Jose.Garcia@dyconcretepumps.com



Samuel Najera Garcia

Paint Supervisor
Samuel.Garcia@dyconcretepumps.com



Braden Huggins

Marketing Manager
Braden.Huggins@dyconcretepumps.com



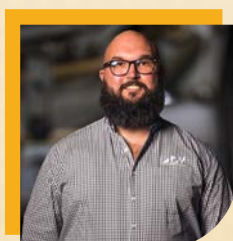
Rhonda Jones

Controller
Rhonda.Jones@dyconcretepumps.com



Wayne Allen

VP of Operations
Wayne@dyconcretepumps.com



Jason Delehay

Vice President
Jason@dyconcretepumps.com



Joe Delehay

President
Joe@dyconcretepumps.com

MEET THE TEAM

SALES



Michael "Doc" Dockery

Regional Sales Manager
206-637-2218
Michael.Dockery@dyconcretepumps.com



Ryan Malowney

Regional Sales Manager
213-633-9132
Ryan@dyconcretepumps.com



Larry Keim

Keim Concrete Pumping
Regional Dealer - Ohio, USA
330-231-6025
Larry@keimconcretepumping.com



Wade Jimerson

Regional Sales Manager
830-388-8237
Wade.Jimerson@dyconcretepumps.com



Lee Springer

Regional Sales Manager
706-506-7399
Lee.Springer@dyconcretepumps.com



Jeromy Peterson

Regional Sales Manager
913-205-8695
Jeromy.Peterson@dyconcretepumps.com



Jack Keeker

Service Technician & Service Sales
682-800-7123
Jack.Keeker@dyconcretepumps.com



Chris Smith

Executive Account Director
682-351-0494
SmithC@dyconcretepumps.com



Mike Morris

North America Sales Manager
214-960-9124
Mike.Morris@dyconcretepumps.com

IT'S ALL
ABOUT
THE PEOPLE!

40X-5ZR

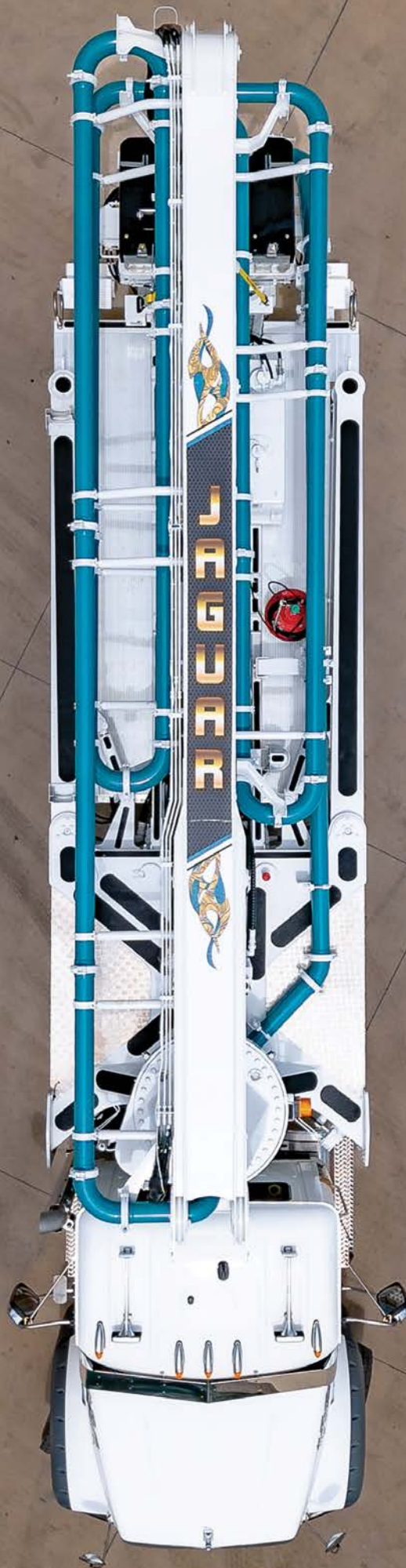
CONCRETE PLACEMENT OF THE OZARKS
SPRINGFIELD, MO, USA


Axel configuration customized specifically for this unit.



33X-5ZZ

JAGUAR CONCRETE PUMPING
ORANGE PARK, FL, USA





THE ONLY CONCRETE PUMP SERVICE CENTER IN TEXAS

DY SERVICE CENTER'S EXPERT TECHNICIANS HAVE DECADES OF INDUSTRY EXPERIENCE WORKING ON ALL MAKES AND MODELS OF CONCRETE PUMPS.

Our seasoned service experts are well-equipped to tackle issues of different magnitudes and complexities across a wide range of concrete pump makes and models. Whether it's a minor repair or a major overhaul, our Service Center has the expertise to tackle any challenge. Bring your problem to us, and we will do our best to get you back out pumping again!

**CALL US TODAY TO BOOK YOUR
NEXT SERVICE APPOINTMENT!**

1-844-397-8677

The DY Service Team provides a variety of services including, but not limited to:

- ▶ General Maintenance
- ▶ Electrical Repair
- ▶ Radio Remote Repair
- ▶ Boom System Replacements
- ▶ Inspection Reports


**BUILT TO
PERFORM**

LOCATIONS & DEALERS



Dallas-Fort Worth, Texas Headquarters


-  Parts
-  Service
-  Production
-  Engineering
-  Administration

 4521 CR 616
Alvarado, Texas, USA
76009



Alberta, Canada Facility


-  Parts
-  Service

 10720-48 St. SE
Calgary, AB, Canada
T2C 3E1



North Eastern Dealer Keim Concrete Pumping, Inc.

-  Parts
-  Service
-  Sales

 1610 Co Rd 200
Dundee, Ohio, USA
44324

63X-5RZ

CYCLONE TRUCKING INC.

LEWISVILLE, TX, USA





**BUILT TO
PERFORM**



Concrete Pumps Inc.

**BUILT TO
PERFORM**

1-844-397-8677

www.DYConcretePumps.com



DYConcretePumps



Dallas-Forth Worth, Texas Headquarters

4521 CR 616

Alvarado, Texas, USA

76009